

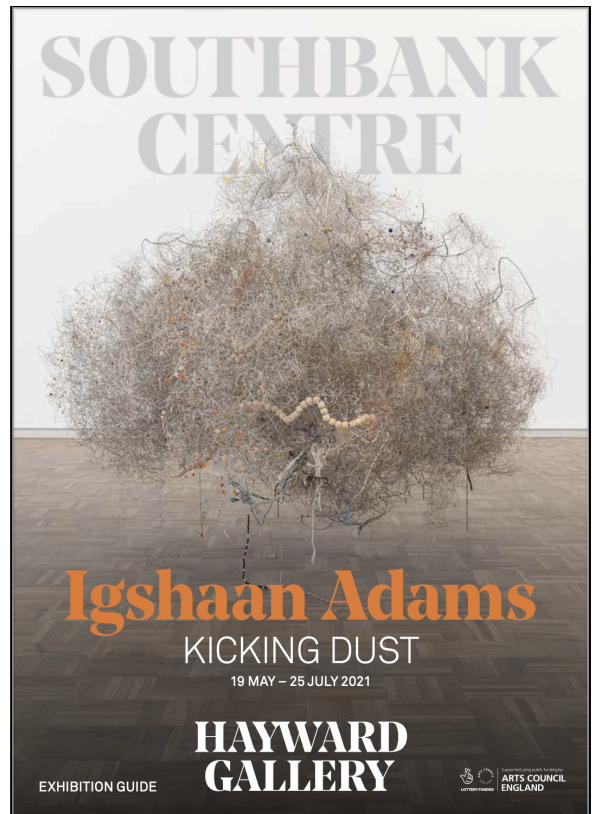
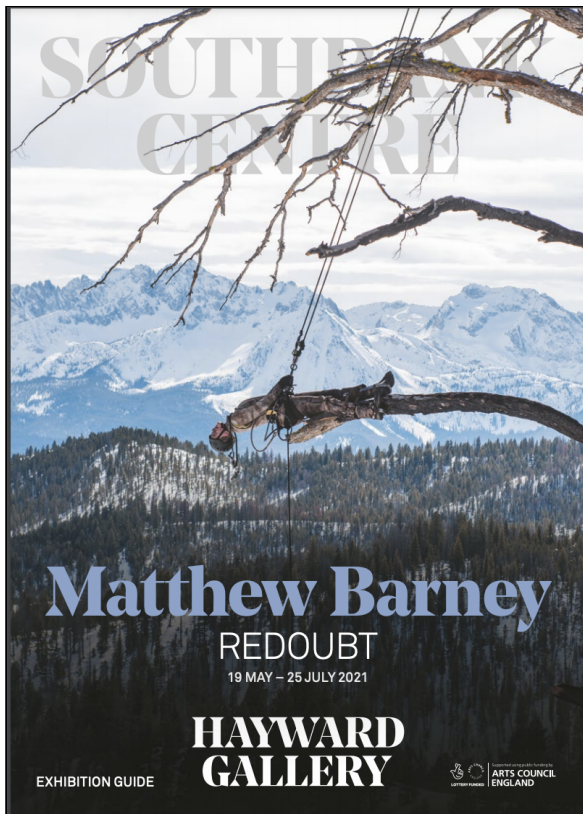
**SOUTHBANK
CENTRE**

Matthew Barney

REDOUBT

Igshaan Adams

KICKING DUST



**HAYWARD
GALLERY**

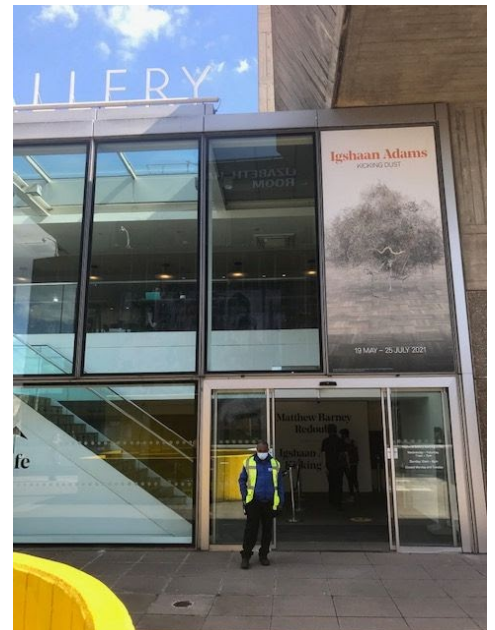
Preparing for your visit

This information is for you to use as much or as little as you like, to help you to prepare for your tour of the exhibitions.

In this handout, you will find pictures of the route through the exhibitions and information about what you will experience along the way.

For the Relaxed Hours event on 17 June 2021, 11am – 1pm, we make small changes to ensure a visit to the gallery is comfortable and accessible for our visitors who require a more relaxed environment, including reducing the number of visitors in the galleries for these two hours. It is a time and space where visitors can be themselves.

Entrance to the exhibitions is via the Hayward Gallery main entrance. We operate a one-way system. Please arrive as close to your time slot as possible. You will be asked to wait outside until your time slot begins.



Hayward Gallery facilities

Cloakroom

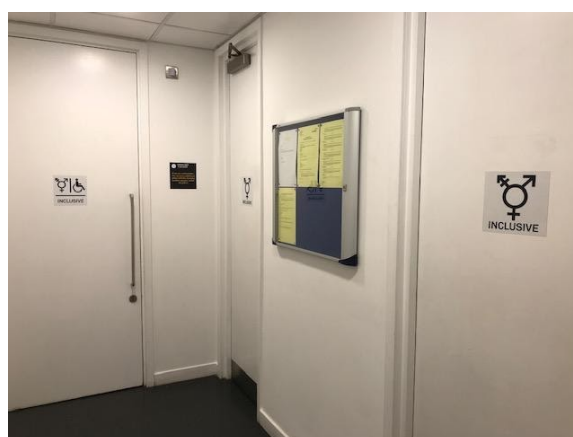
The cloakroom is closed in order to reduce face-to-face contact. You won't be able to bring any bags over 40 x 25 x 25cm into the exhibition, so please leave large bags at home.



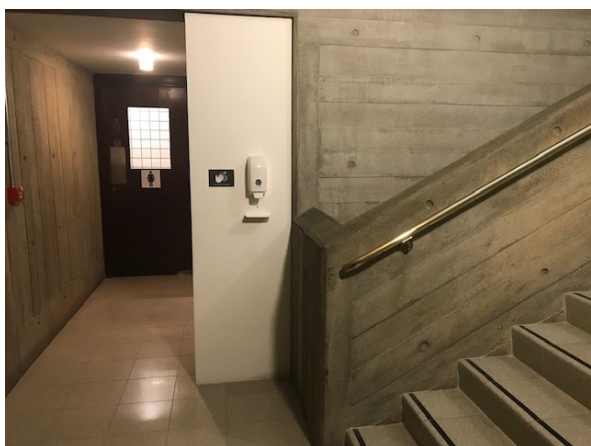
You can request to borrow a gallery stool to use while you explore the exhibition. These stools are foldable and lightweight to carry. There are also two wheelchairs available to borrow if needed. We recommend pre-booking the wheelchairs where possible.

Toilets

There are three gender-neutral toilets (this means everyone can use them) located in the foyer between the shop and the cloakroom. One of these toilets is an accessible toilet. There is a digital screen next to the entrance, which will tell you if the toilets are vacant (green light) or occupied (red light).



There are additional toilets within the galleries, located halfway down the front staircase, which is the exit from the Matthew Barney exhibition. These toilets are separated for women and men.



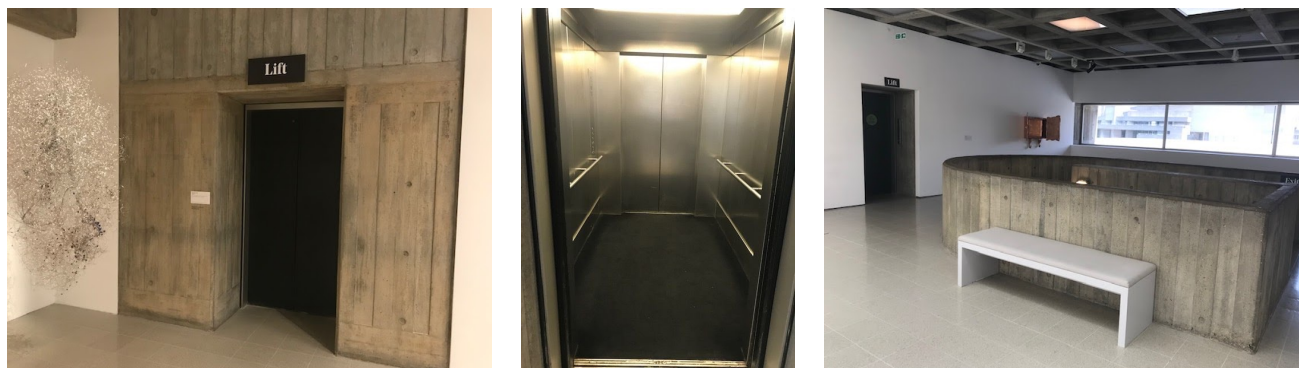
Foyer lift

The foyer lift goes to the following floors: Level 0 in the car park (step-free access route from street level), Level 2 (Hayward Gallery Foyer and Shop, toilets and HENI Project Space) and Level 3 (the Cafe). This is a small lift that can comfortably fit one wheelchair user and companion. There is a mirrored wall facing you as you enter the lift.



Gallery lift

The gallery lift is located on the right just inside the entrance to the Lower Galleries and will take you to the Upper Galleries and back again. The lift has a recorded female voice who gives commentary such as 'Doors closing' and 'Going up'. This is a large lift that can fit many people inside. It has silver-coloured walls and a black carpet.



Seating

There are benches for visitors to sit on in some of the rooms. You can also borrow a foldable gallery stool from the cloakroom if you prefer. A Hayward Gallery Host will always be happy to bring you a stool if you need one. Just ask the nearest member of staff with a yellow lanyard.

Hayward Gallery Cafe and finding quiet space

The Hayward Gallery Cafe is located on Level 3 and can be accessed either by the staircase in the foyer or by taking the lift in the foyer to Level 3.



If you need a quiet space, then you are welcome to use the Dan Graham Waterloo Sunset Pavilion next to the Hayward Cafe. This is an ellipse-shaped glass pavilion with views over Waterloo Bridge.

Take the foyer stairs or lift to Level 3.






The cafe will be open from 12 noon and so there will be no customers using this area from 11am –12 noon.

Two other options for a quiet (chill-out) space:

- Cafe tables outside Hayward Gallery Foyer entrance
 - Tables and chairs behind the Queen Elizabeth Hall, overlooking the River Thames
-

Exhibition rules

	Please do not touch
	Photography is allowed with no flash However, no photography or filming of the <i>Redoubt</i> film
	No food or drink in the galleries

Barriers

You will notice that most of the artworks have no barriers around them but have floor tape instead. This means that you should not step forward beyond this point, in order to keep the artwork safe.



The Matthew Barney exhibition is clearly demarcated with arrows for directions, and lines to give an indication of how far you should be from the artwork.

There are no barriers in the Igshaan Adams exhibition. Although the artwork can be looked at closely, it cannot be touched.

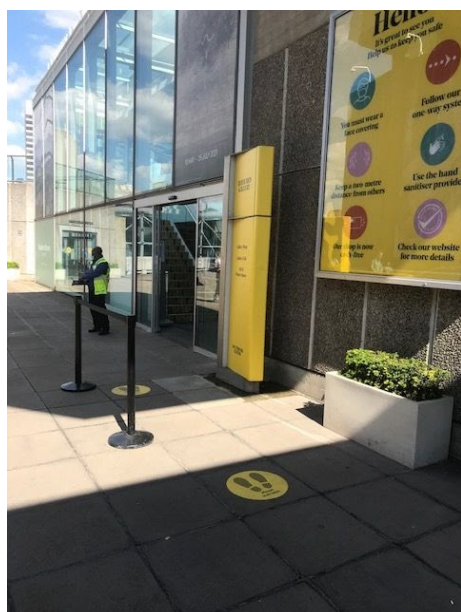
Hayward Gallery Hosts

All our Hayward Gallery Hosts wear bright yellow lanyards with black Hayward t-shirts on. Due to Covid regulations, they will be wearing face coverings and keeping a safe distance from visitors.

Our hosts' priority is to ensure you have a positive and safe experience at the gallery. They are friendly, knowledgeable and passionate about visual art, and if you need help or have a question about anything in the gallery, they'll be happy to assist.

What happens when you arrive at the Hayward Gallery

There may be short queues to enter the building and the exhibitions. If you are not able to queue or need further assistance, our staff are here to help you.



When you arrive at the Hayward Gallery entrance, the Security Officer outside will ask to see your e-ticket and check the time you have booked.



They will then ask you to follow the yellow dots on the floor in the foyer to the ticket desk.

A Hayward Gallery Host will scan your e-ticket and tell you about the rules of the gallery.

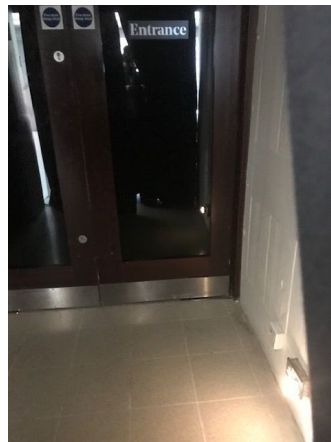


There are toilets in the foyer if you wish to use the facilities before you see the exhibitions.

When you are ready to enter the exhibitions, you will move towards the entrance covered with black curtains, to the left of the Ticket Desk. You can take an exhibition booklet from the stand before you go through the curtains.



The space in between the curtains and the gallery doors is dark, but there is a small light on the wall to help you see. You will then go through the doors and enter the galleries.

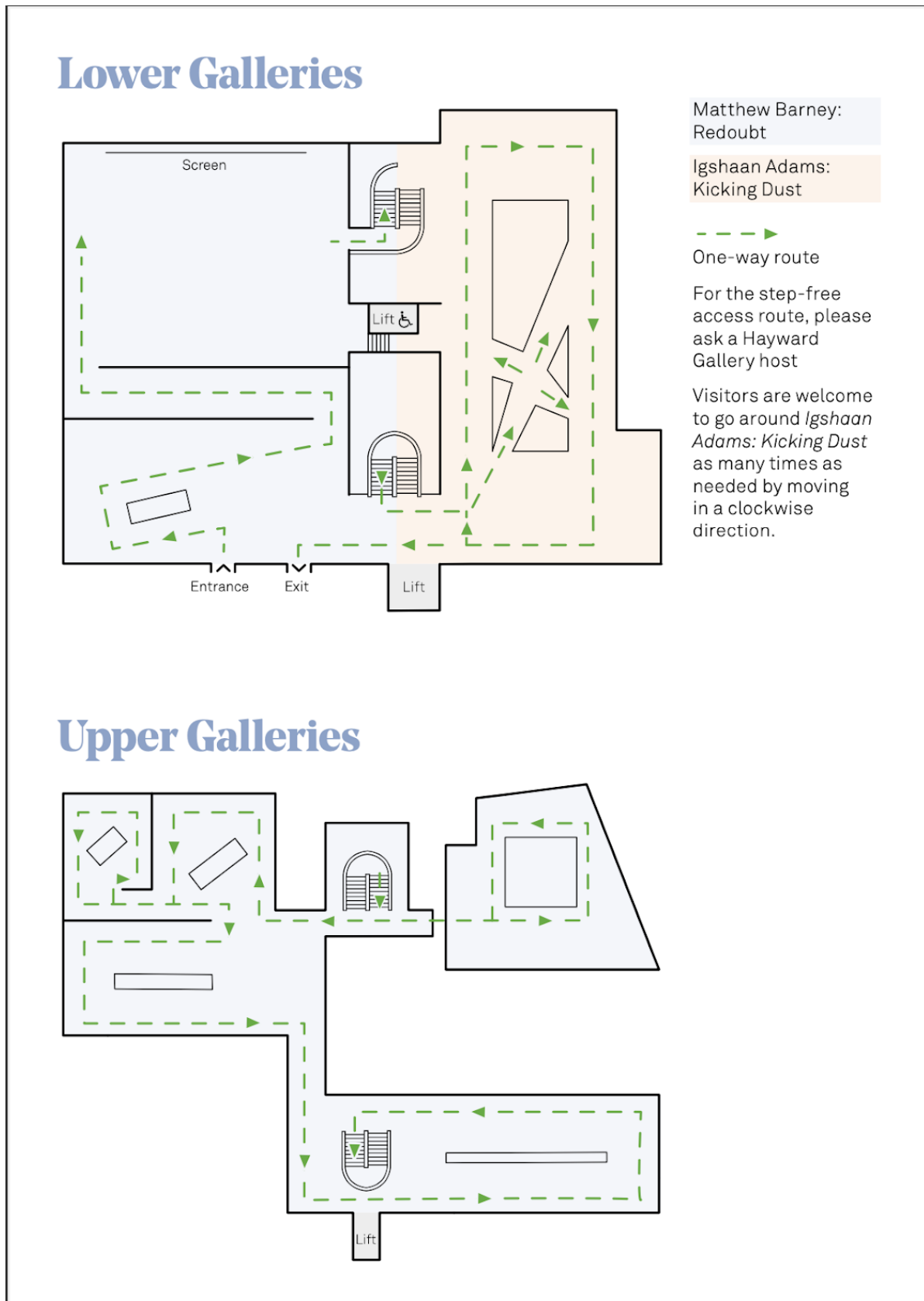


There are several hand sanitiser dispensers in the foyer. Step on the pedal of the tall silver dispenser and hold your hand near the pump at the top, which will dispense some sanitiser in your hand.



There is another hand sanitiser dispenser near the toilets in the galleries.

The routing for the two exhibitions is quite different. There is a one-way system in operation.



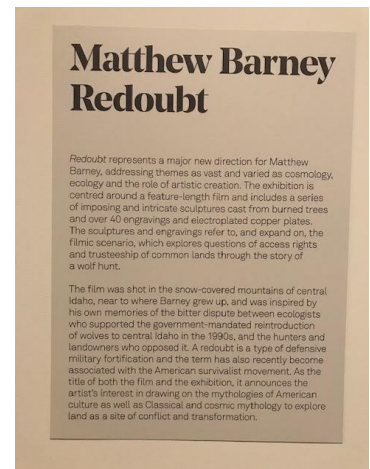
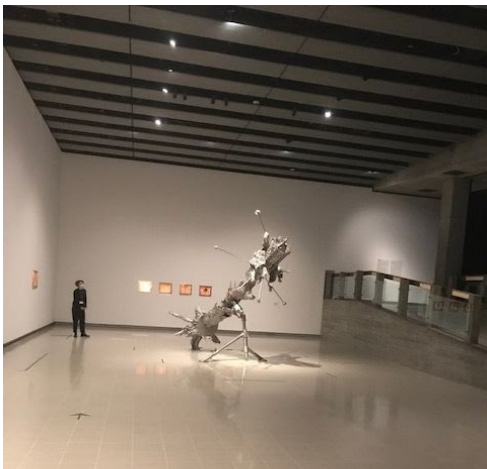
Matthew Barney – information about the exhibition

Matthew Barney is a filmmaker and artist and the exhibition features sculptures, engravings and a feature film inspired by his home in Idaho, USA.

The exhibition is located on two floors: Lower Galleries and Upper Galleries. There are two rooms to explore in the Lower Galleries and the external sculpture court plus two rooms in the Upper Galleries. The exhibition includes a mixture of copper etchings, large-scale sculptures and a feature-length film (2 hours 14 minutes), which is also available to watch online.

It is okay to leave the exhibition at any time, if you need to. You can go in again as long as it is on the same day.

Room 1



As you enter the Lower Galleries, you are now in Room 1. This room has artwork hanging on two walls and a sculpture in the middle of the room. The lighting levels are low and there are spotlights on the wall art and on the sculpture. The spotlights on the copper etchings make them sparkle as you look at them.

There are two introductory text panels on the wall and captions near individual artworks. You can ask a Hayward Gallery Host for a paper copy of large-print captions if you find the wall text too small to read. Follow the arrows on the floor to know which direction to go.

The audio from the film in the next gallery is quite loud at certain moments and we are unable to make it much quieter. However, we do have ear plugs for visitors to use. You can contact us to request these before you visit, or simply ask the nearest member of staff.

Go up the ramp when you are ready to move to the next room.

Room 2: feature-length film by Matthew Barney

Redoubt (2018)

Runtime: 2 hours 14 minutes



This is a dark space with low-level lighting and a black carpet. There are chairs laid out for you to sit wherever you like. The Hayward Gallery Host has a torch for you to borrow if you would like one.

The film is shown on a cinema-sized screen and there are plenty of individual seats, including spaces for wheelchair users, to allow for social distancing. There is no dialogue in the film and much of the soundtrack features specially composed ambient music and the sounds, such as the characters moving through the deep snow or going about their tasks, but there are some loud noises, including six gunshots. The speakers are arranged around the middle of the seated area and so it will be louder if you sit here.

The film is shown on a loop. The approximate start times for screenings of the full film are:

Wed – Sat: 11.05am, 1.20pm, 3.40pm

Sun: 10.05am, 12.20pm, 2.40pm

You do not have to watch all of the film. You are welcome to watch as much or as little as you like.

In addition to viewing the film in the exhibition at the Hayward Gallery, ticket holders can watch it online via the film streaming platform MUBI. Watch the film trailer [here](#).

Please be aware of the following elements of the film, which may upset some viewers:

Gunshot sounds: 0:46:51, 1:02:57, 1:07:35, 1:20:29, 1:44:08, 1:52.22

Dead animals (staged using special effects): 0:01:50–0:02:38, 0:06:47–0:06:54, 0:46:24–0:47:04, 1:03:05–1:03:20, 1:12:38–1:13:08, 1:13:27–1:17:30, 1:52:20–1:53:30, 1:55:50–2:00:28

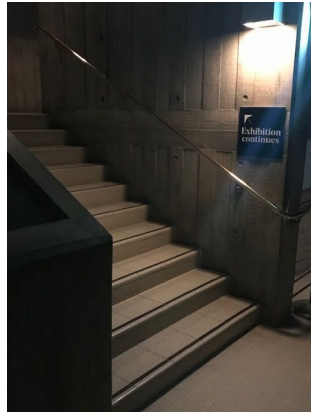
A unique code and link is included on the exhibition e-tickets, which are emailed to you after purchase. Use these to view the film on MUBI between Friday 12 May and Sunday 1 August. Access to the film and MUBI lasts for seven days after the code is activated. Please note that your code can only be used once. *Redoubt* is only available to UK audiences.



This is an example of an e-ticket.

You will find your unique code under the 'Event' title on your e-ticket.

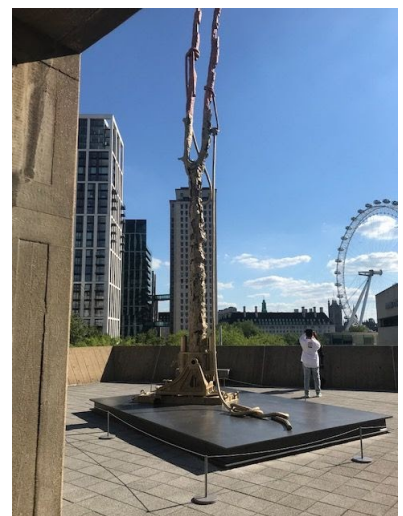
When you are ready to move on, go through the door to your right and walk up the staircase to the Upper Galleries to see the rest of the Matthew Barney exhibition.



If you would prefer to take the lift, walk back down the ramp to Room 1 and you will see the lift to the left hand side, near the exit to the galleries.

Sculpture Court

At the top of the stairs, you will see an arrow pointing to the left. Go through the doors and out onto the sculpture court to see the sculpture outside.



The light can be very bright, so take care as you move from inside the building to outside. It can take time for your eyes to adjust after watching the film.

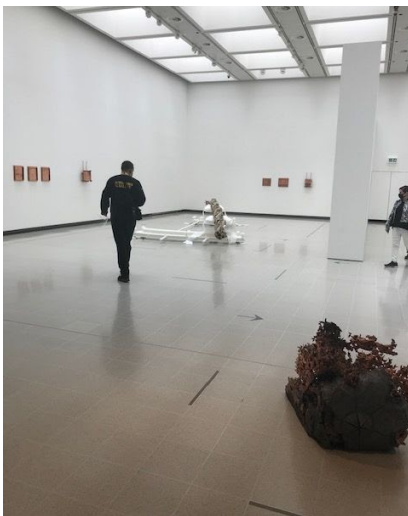
You will notice low barriers surrounding this artwork. This is to make sure that nobody steps on to the base of the artwork.

There are stone benches for you to sit on, but please do not climb or stand on them. Stay safe and keep away from the edges of the terraces.

When you are ready to move on, go back through the doors and re-enter the gallery. Take care if it is a bright and sunny day, as your eyes may need to adjust to the different lighting inside the gallery.

Room 3

Room 3 is a large square space divided into three smaller rooms. There is artwork on the walls and there are three freestanding sculptures to look at.



There is natural light in Upper Galleries, which floods in through the pyramid roof lights and windows. Copper and brass plate surfaces and the glazing are shiny and highly reflective and can be dazzling in bright sunshine. The engravings and electroplates are finely detailed.



When you are ready to move to the next room, walk along the corridor that connects Room 3 to Room 4.

Room 4

There are many copper engravings and electroplates on the walls and one large sculpture in the middle of this room. There is natural light from the overhead pyramid roof lights and the windows. The copper surfaces of the artworks are shiny and highly reflective.



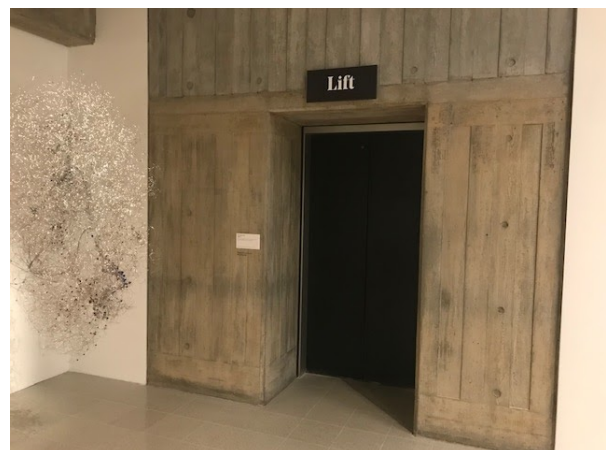
There is a bench on either side of the stairwell for you to sit on, if you wish.



To exit the Matthew Barney exhibition, either walk down the front staircase or take the lift down to the Lower Galleries.



At the bottom of the staircase, you will see an arrow pointing to the left for the entrance to Igshaan Adams exhibition. If you take the lift down to the Lower Galleries, turn to your right and you will see the entrance to the Igshaan Adams exhibition.



There is a hanging wire sculpture that slowly and gently rotates. The lighting level is low and there is a spotlight shining on this sculpture, which casts a shadow on the wall.

Igshaan Adams – information about the exhibition

You will see the entrance to the left of the exhibition sign. Push the door and enter into the gallery. The door may make a banging noise when it closes.



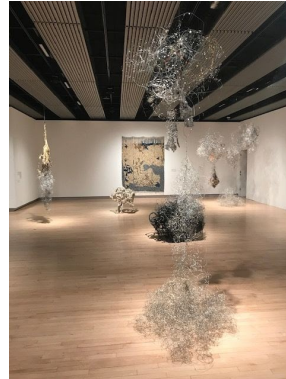
The room is rectangular in shape and you will notice that there are no physical barriers or floor tape around any of the sculptures or tapestries.

We ask that visitors do not touch the artworks in the exhibition.

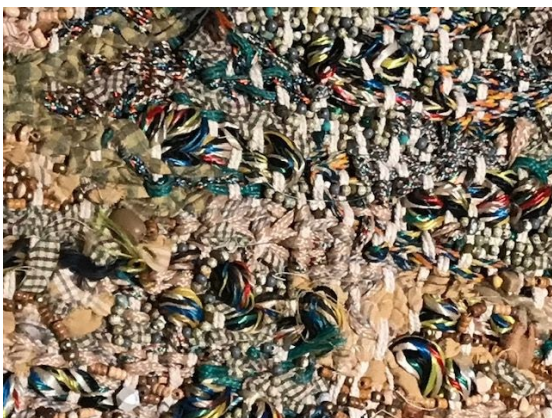
Igshaan Adams' art combines weaving, sculpture and installation. Sculptures that resemble clouds, (made from wires and beads) are suspended from the gallery's ceiling, tapestries adorn the walls and weavings have been placed strategically on the floor to allow pathways through the gallery for visitors to choose their route. It does not matter which route you choose, as long as you always keep a safe distance from other visitors.



Lighting levels are subdued enough for the low-hanging sculptures to cast shadows on the floor and walls, but it is light enough to be able to see the sparkle of beads and glittery threads used in the artworks.



Touch materials: Courtesy of the artist, we have a sample of the materials used to make the artworks in the *Kicking Dust* installation.

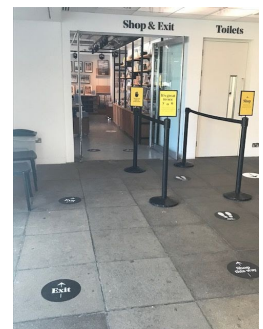
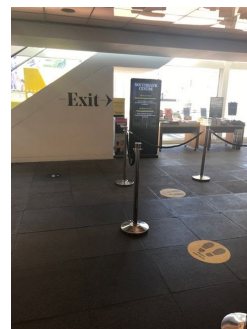
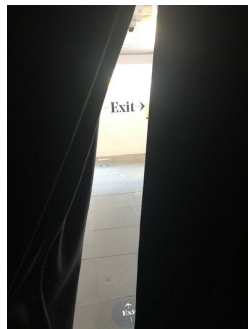


Visitors will be asked to sanitise their hands when handling these materials. Hand sanitiser gel will be supplied by Hayward Gallery Hosts. Please contact customer@southbankcentre.co.uk in advance of your visit if you wish to book this complimentary service.

When you are ready to leave the exhibition, push the door marked 'exit' at the end of the room. The door is on a slow release and will take some time to close.



You will see the exit to the foyer located in Room 1. The space in between the gallery doors and the black curtains is dark. Ask a Hayward Gallery Host if you would like any assistance.



You will go through the curtains, enter the foyer and follow the signs to exit through the Hayward Gallery Shop.



We are committed to ensuring all visitors feel welcome and have an enriching and positive experience when they visit the Hayward Gallery. We are keen to hear about your experience and ways you feel we may be able to keep building on that. Our staff in the gallery are always looking to hear what you think – speak to them directly or give feedback via one of our forms in the foyer.

We hope you enjoyed the *Redoubt* and *Kicking Dust* exhibitions. Thank you for visiting the Hayward Gallery. We look forward to seeing you at our next exhibition.

To be kept in the loop about Relaxed Hours at the Hayward Gallery, please email accesslist@southbankcentre.co.uk

More information about our Access Scheme can be found on our [website](#).