



## Imagine Children's Festival

PREPARATION STORY

Wednesday 7 – Saturday 17 February 2024

# Welcome to Imagine Children's Festival 2024 at the Southbank Centre

*Imagine Children's Festival* is an 11-day festival at the Southbank Centre, which is a big arts centre next to the River Thames, near the London Eye. It's made up of a number of buildings, including the Royal Festival Hall (shown here) and lots of outdoor spaces.

[Find out how to get to the Southbank Centre.](#)

The festival is all about being yourself, being creative, exploring new things and having fun!

## Arriving at the Southbank Centre

Depending on which direction you are coming from, you will arrive at one of the four doors into the Royal Festival Hall building, where most of the festival takes place.

### From the access drop-off point

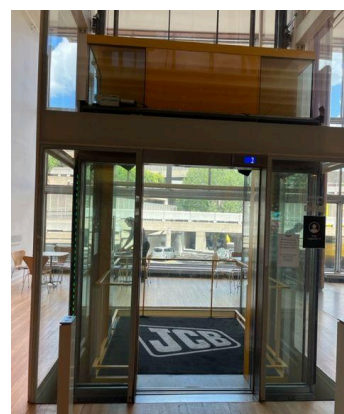
Blue Badge holders and those with access requirements can be dropped off on the Queen Elizabeth Hall Slip Road.

This is the road between the Royal Festival Hall and the Hayward Gallery, off Belvedere Road. There are four Blue Badge parking spaces located on the Queen Elizabeth Hall Slip Road.

Spaces are allocated on a first-come, first-served basis and are free to use. You must display your Blue Badge as you enter the site.

For step-free access to the Royal Festival Hall, enter through the Southbank Centre Square Doors and use the JCB Glass Lift located on your right-hand side. All floors can be accessed using this lift.

The JCB Glass Lift plays recorded choir voices singing as the lift moves. The voices are deep on Level 1 and get higher as you move up the building to Level 6. The voices sing the floor level when the lift arrives at a floor and the doors open.





## From the Riverside Terrace

You can enter the Royal Festival Hall from the Riverside Terrace through the doors on the left-hand side (Blue Side) or the right-hand side (Green Side) of the building.

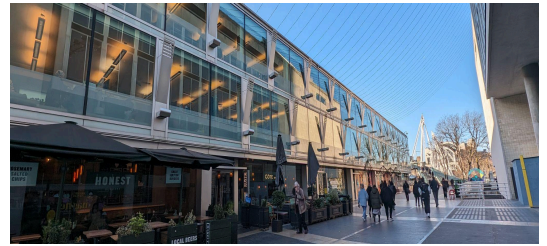
The building is divided into Green Side and Blue Side. This does not mean the building is different colours, but they are names we use to help people find their way around.

After you go through either set of doors, you enter the Riverside Terrace Cafe, which serves hot and cold drinks and food.



## From Waterloo station

You might come up a big set of steps and pass this row of restaurants and shops on your left.



Then you'll turn right and come onto the terrace which looks like this:

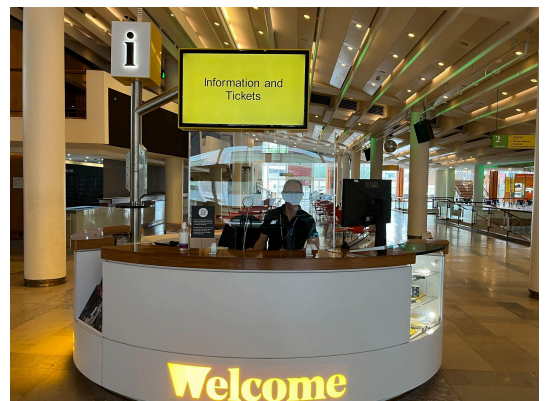
You can then enter the main Level 2 spaces of the Royal Festival Hall via the Riverside Doors on the Riverside Terrace.

As you enter, it is likely to be quite busy and noisy.



There is a Welcome Desk near The Clore Ballroom towards the back of the building on Level 2, where we have staff ready to answer any questions and point you towards any activities you're trying to find.

Ear defenders are available throughout the festival from the Welcome Desk.



## What do our spaces look like?

The Level 2 Royal Festival Hall spaces look a bit like this, but might have some stalls selling things and some face painting stations.



In the Royal Festival Hall building, you might go to:

### Exhibition Space, Level 1

If you're visiting [Art Makes People Powerful](#), you'll come to our Exhibition Space on Level 1.



### Activity trail

During the festival there is a free activity trail inside and outside the Royal Festival Hall. It is called the [Mish Mash Family Trail](#). You can pick up the activity sheet near the Welcome Desk on Level 2. Travel around the building to complete the trail.

The trail has been designed by Heart n Soul's Feel Good Designers and invites you to listen, look, draw, dance and play! It includes a giant chalkboard you can draw on, a place to chill out, characters to spot and a dancefloor to play and groove on outside!





### **The Clore Ballroom, Level 2**

The Clore Ballroom is next to the Welcome Desk on Level 2. Every day of the festival (apart from Saturday 17) there is something free to do or see here. This space can often be quite busy, and might include music, dancing, singing, storytelling, comedy or live illustration. It usually has a host for the day, and sometimes people will be dressed up in different costumes during those performances.



### **Balcony Bar, Level 5**



### **Level 5 Function Room, Green Side**



### **Sunley Pavilion, Level 3, Blue Side**

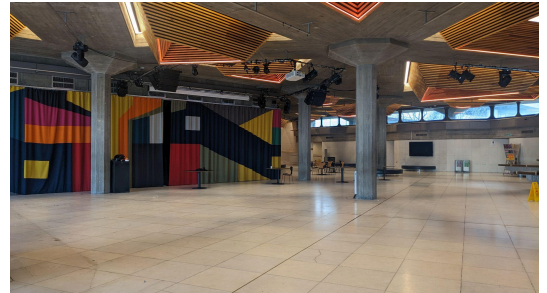


## Queen Elizabeth Hall & Purcell Room

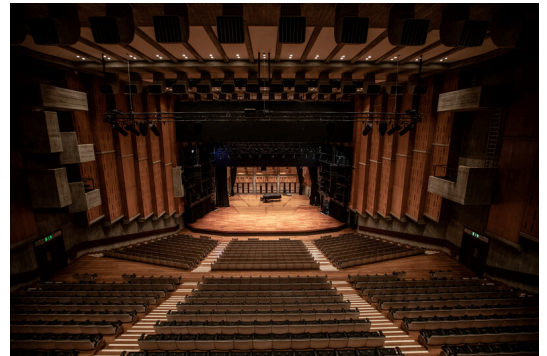
If you're going to a show in the Queen Elizabeth Hall, you need to go to the concrete building next door to the Royal Festival Hall. The Purcell Room is inside the Queen Elizabeth Hall.



The foyer of the Queen Elizabeth Hall looks like this: There will be music playing in this area and colourful lights. It will be quite busy and noisy.



The Queen Elizabeth Hall auditorium looks like this inside:



And the Purcell Room looks like this:



## Quiet space

If you need to take some time in a quiet space, just ask one of our Visitor Assistants and they will help you find our quiet space in the Royal Festival Hall or Queen Elizabeth Hall. The Foyle Pavilion on Level 3, which is the quiet space in the Royal Festival Hall, looks like this:





## After your visit

We hope you enjoyed *Imagine Children's Festival*. Thank you for visiting the Southbank Centre. We look forward to seeing you again soon.

We are committed to ensuring all visitors feel welcome and have an enriching and positive experience when they visit the Southbank Centre. We are keen to hear about your experience and ways we can keep improving.

Our staff would like to hear what you think – speak to them directly or give feedback by email:  
[hello@southbankcentre.co.uk](mailto:hello@southbankcentre.co.uk)

To receive emails about relaxed events at the Southbank Centre, please email:  
[accesslist@southbankcentre.co.uk](mailto:accesslist@southbankcentre.co.uk)

More information about our Access Scheme can be found on our website.

To stay up to date and receive information about our year-round programme of accessible events, please email: [artsandwellbeing@southbankcentre.co.uk](mailto:artsandwellbeing@southbankcentre.co.uk)

