

HAYWARD GALLERY

TOURING

Date: Wednesday 21 August 2024

Contact: Megan Edwards, Press Officer (Visual Arts), megan.edwards@southbankcentre.co.uk

Images are available to download [here](#)

This press release is available in a variety of accessible formats. Please email

press@southbankcentre.co.uk

Paula Rego Visions of English Literature

Launching at **Lakeside Arts, University of Nottingham** (21 September - 5 January 2025)
and touring

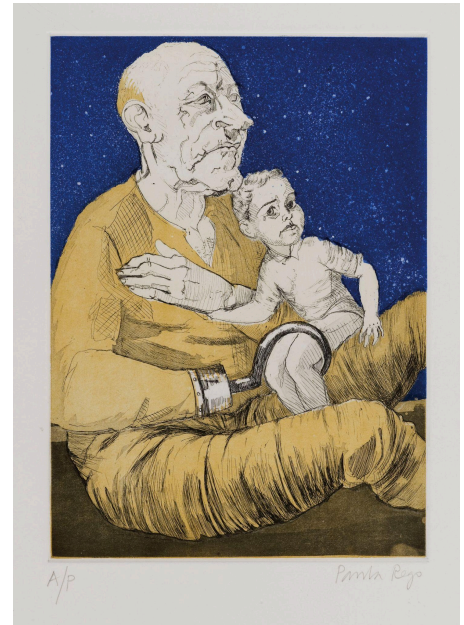


IMAGE CREDITS IN NOTES TO EDITORS

“We interpret the world through stories... everybody makes in their own way sense of things, but if you have stories it helps.” Paula Rego

Hayward Gallery Touring presents a new exhibition of the internationally renowned Portuguese-British artist Paula Rego (1935 - 2022). Launching in September 2024 in Lakeside Arts' Djanogly Gallery, University of Nottingham, **Paula Rego: Visions of English Literature** will showcase the artist's remarkable printmaking practice, taking a deep look into the literary influences that have inspired Rego's works.

One of the great printmakers and storytellers of our time, Paula Rego drew inspiration from a vast range of sources - from traditional folklore and fairy tales, to literary classics and nursery rhymes. *Paula Rego: Visions of English Literature* will present three of the artist's most ambitious and profound series of works in printmaking: **Nursery Rhymes**, **Peter Pan** and **Jane Eyre**, made across a decade of the artist's life. Each series will be accompanied by a variety of personal items from the artist, many of which have never been publicly displayed before. Unseen preparatory sketches, etching plates and Rego's very own childhood copy of *Peter Pan* will offer audiences an intimate portrayal of the artist's lifelong fascination with literature and insight into how the artist transformed this material into startlingly original and unexpected pictures.

From menacing oversized creatures etched into life from children's nursery rhymes such as *Little Miss Muffet* and *Three Blind Mice*, to the almost hallucinatory depictions of Neverland from *Peter Pan* and the tumultuous relationships based on power read about in *Jane Eyre*, Rego's work tells stories that combine fantasy and imagination, innocence and cruelty, in order to explore the complexities of life and the experience of women in particular, in all its strangeness and mystery. *Paula Rego: Visions of English Literature* aims to spark new ways of seeing the world from audiences in relation to these seemingly familiar, age-old stories.

Hayward Gallery Touring is the UK's largest contemporary art organisation producing exhibitions that tour Britain. As part of the Southbank Centre, an engine of creativity for the nation's artists and audiences, Hayward Gallery Touring is passionate about the important role that cultural institutions play in providing access to the arts. *Paula Rego: Visions of English Literature* will bring a unique cultural experience to new audiences up and down the UK, providing an opportunity to step into the world and mind of one of the most important figurative artists of her generation.

Brian Cass, Senior Curator, Hayward Gallery Touring, says:

"Throughout her life, Paula Rego used print-making as a central tool of her art. Taking inspiration from literature, she connected with stories in very personal ways, using them to articulate the conditions of her own life and draw her desires, dreams, fears, and traumas into sequences of remarkable pictures.

Hayward Gallery Touring had the honour of working with Paula Rego on a small travelling show in the 1990s. We are absolutely delighted to continue this relationship 35 years later, and by collaborating with a range of exhibition partners, celebrate her unique art and vision with audiences across the UK."

Djanogly Art Gallery, Nottingham, says:

"We are delighted to be the first venue to exhibit *Paula Rego: Visions of English Literature*. Rego is widely regarded as among the most eminent artists of the late-20th and early-21st centuries, yet her printmaking, an important part of her practice, can sometimes be overlooked. I'm excited that this exhibition focuses on a tightly curated selection of the artist's prints and the creative processes that lay behind them. Visitors can expect an accessible and engaging introduction to Rego's works in the exhibition due to familiarity with many, if not all, of the stories and literary classics depicted."

Paula Rego's Estate, says:

"Life with Paula was filled with stories, humour and mischief and she always seemed to have her own, surprising twist on the books she read. She often said that she had the most fun making the prints for these series because the stories were already laid out for her, but there's no question that she made them her own. We'd like to thank Hayward Gallery Touring for mounting this exhibition."

Paula Rego: Visions of English Literature will be a long-standing touring exhibition, taking residency at further locations following its presentation at Lakeside Arts. These locations will be announced at a later date.

Paula Rego: Visions of English Literature is a Hayward Gallery Touring exhibition. It has been developed with the support of Paula Rego's Estate.

-ENDS-

NOTES TO EDITORS

Image Credits (left to right)

- *Come to Me*, 2001 – 2002, Coloured lithograph, Paper and Image: 99.5 x 67 cm - 39 1/8 x 26 3/8 in, Edition of 35. © Ostrich Arts Ltd | Paula Rego Estate. Courtesy Ostrich Arts Ltd and Cristea Roberts Gallery.
- *Three Blind Mice II*, 1989, Etching and aquatint, Paper and Image: 52 x 38 cm - 20 1/2 x 15 in, Edition of 50. © Ostrich Arts Ltd | Paula Rego Estate. Courtesy Ostrich Arts Ltd and Cristea Roberts Gallery.
- *Captain Hook and the Lost Boy*, 1992, Coloured etching and aquatint on Somerset paper, Paper: 61.7 x 50.5 cm – Image: 27.7 x 20.1 Paper: 24 1/4 x 19 7/8 in – Image: 10 7/8 x 7 7/8 in Edition of 50, Courtesy Ostrich Arts Ltd and Cristea Roberts Gallery.

Paula Rego Image Terms and Conditions

- The permission may only be used as requested.
- The image must be accompanied by the full caption and credit lines provided.
- The image must be reproduced in full colour and should not be altered, cropped or overwritten with text in any way.
- Please use the full image plus a margin of white around the image so that the image looks like the print.
- Should you wish to use the images for publicity or marketing purposes, beyond those already agreed, separate permission must be sought from the artist via Cristea Roberts Gallery.

About Hayward Gallery Touring

Hayward Gallery Touring is the UK's largest contemporary art organisation producing touring exhibitions. Based at Southbank Centre, Hayward Gallery Touring works with a range of artists, curators, designers and writers to develop curatorial projects and ambitious exhibitions that are often beyond the scope of a single institution.

Hayward Gallery Touring's programme includes the British Art Show - the largest and most significant exhibition of contemporary art produced in the UK - as well as thematic group shows and monographic exhibitions created for venues including museums, galleries, art centres, libraries, schools, hospitals and other unexpected partners and places.

Hayward Gallery Touring exhibitions are seen by up to half a million people in over 45 cities and towns each year.

About the Southbank Centre

The Southbank Centre is the UK's largest multi-arts centre and engages the most diverse audiences of any performing arts organisation in the UK. Our biggest venue, the Royal Festival Hall (2,700 seats) is the lasting legacy of the 1951 Festival of Britain and the ambition and values of that project –

that arts, ideas, innovation and culture can heal communities and should be available and accessible to everyone – are still our guiding principles today. The Southbank Centre is uniquely able to offer a wide-ranging, inclusive and world-class artistic programme spanning contemporary visual arts, music, dance, performance, literature, comedy and spoken word across the Royal Festival Hall, Queen Elizabeth Hall, Purcell Room, the Hayward Gallery and our free spaces. We are also home to the National Poetry Library, the National Academy for Social Prescribing (NASP) and six resident orchestras (Aurora Orchestra, Chineke! Orchestra, London Philharmonic Orchestra, London Sinfonietta, Orchestra of the Age of Enlightenment and Philharmonia Orchestra).
www.southbankcentre.co.uk

Website: <https://www.southbankcentre.co.uk>

Facebook: Southbank Centre

Instagram: @southbankcentre

X (formally Twitter): @southbankcentre

About Lakeside Arts, University of Nottingham

Lakeside Arts is the University of Nottingham's public arts centre presenting a programme of visual arts, manuscripts and museum exhibitions, as well as music, theatre, dance, children and families' productions. Its venues include the Djanogly Gallery, opened in 1992, that stages a year-round programme of 20th-century and contemporary art exhibitions complemented by a lively programme of public lectures and learning activities. Recent exhibitions have included: *Saad Qureshi: Conversations Before the End Of Time* (2024), *Reimag(in)ing the Victorians* (2023-2024), *Rhythm & Geometry: Constructivist Art In Britain Since 1951* (2023), *Michael Forbes: Blk this & Blk that... a state of urgency* (2022).

Website: <https://www.lakesidearts.org.uk/>

Facebook: lakesidearts

Instagram: @lakesidearts

X (formally Twitter): @lakesidearts



Part of the University
of Nottingham

Cristea Roberts Gallery



Supported using public funding by
**ARTS COUNCIL
ENGLAND**



**SOUTHBANK
CENTRE**
