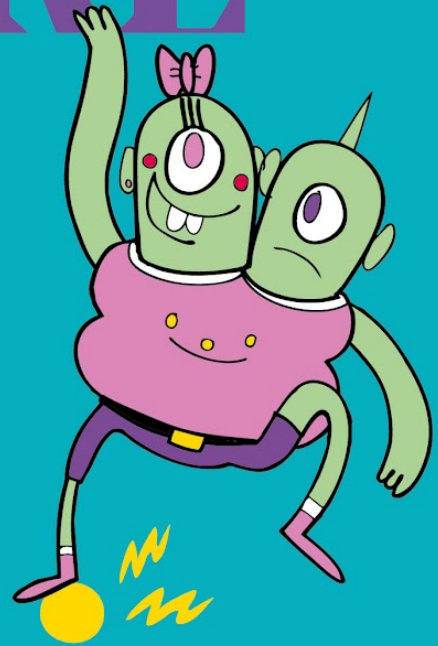


# SOUTHBANK CENTRE



# Imagine

7 – 17 Feb 2024

CHILDREN'S  
FESTIVAL



EASY READ BROCHURE



# Introduction to Imagine Children's Festival 2024

	<p><b>Welcome to Imagine Children's Festival 2024</b></p>
	<p>The festival dates are <b>Wednesday 7 – Saturday 17 February 2024</b></p> <p>*There are free events every day of the festival, except for the final day (Saturday 17 February).</p>
	<p>Imagine Children's Festival events include <b>dance, performance, comedy, music, talks, workshops</b> and <b>visual art</b>.</p>
	<p>Discover the full programme <a href="#">here</a>.</p>



● WAYS TO THE SOUTHBANK CENTRE ● ACCESSIBLE ROUTE

Events take place at venues across the **Southbank Centre**, including the **Royal Festival Hall**, **Queen Elizabeth Hall** and **Purcell Room**.

Our address is:  
**Southbank Centre**  
**Belvedere Road**  
**London, SE1 8XX**

## Access

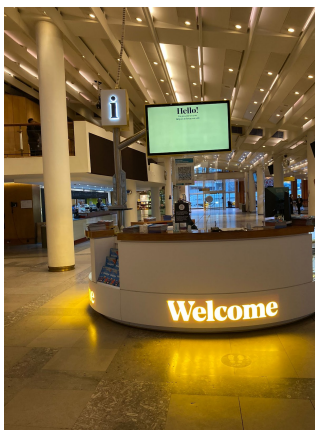


The **Southbank Centre** welcomes all and aims to be accessible to everyone.

Find out more [here](#).



Many events at the festival are free. Find all our free events [here](#).



Our friendly team of staff are available for assistance.



Accessible toilets are available on our site.

A Changing Places toilet is located on Level 1, Royal Festival Hall, next to the JCB Glass Lift, for the exclusive use of disabled people who need personal assistance to use the toilet.

The key for this room is available from the Welcome Desk, Level 2, Royal Festival Hall.

The room has a height-adjustable bench, tracking hoist system, a centrally placed toilet, a height-adjustable basin and a shower.

For health and safety reasons, we do not provide slings. Visitors are asked to bring their own, which should be compatible with the loop system. The maximum weight for the hoist and the height-adjustable bench is 200kg.

The Changing Places toilet is open:

Monday & Tuesday, 10am – 6pm\*  
Wednesday – Sunday, 10am – 11pm

\*On event days, the Royal Festival Hall building remains open until the end of the event.



Imagine Children's Festival is a Relaxed festival, meaning that performances have a relaxed approach to noise and movement in the space, and you are free to enter and exit



throughout. A chill-out space and noise-cancelling headphones are available for adults and children.

There are also Sensory Adapted performances available.

All shows and events are wheelchair accessible.

We welcome Assistance Dogs.



There are a range of events available with BSL interpretation.

Find all our events with access provision [here](#).



### For more information

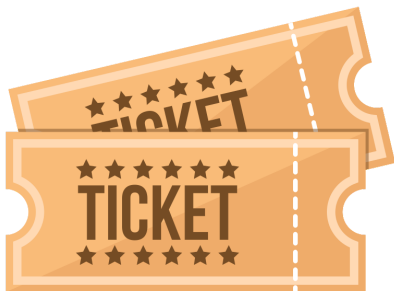
Website:

<https://www.southbankcentre.co.uk/whats-on/festivals-series/imagine-childrens-festival>

E-mail: [hello@southbankcentre.co.uk](mailto:hello@southbankcentre.co.uk)

Phone: 020 3879 9555

## How to book your tickets



Tickets can be booked on our website, via e-mail or by telephone:

Website:

<https://www.southbankcentre.co.uk/whats-on/festivals-series/imagine-childrens-festival>

E-mail: [hello@southbankcentre.co.uk](mailto:hello@southbankcentre.co.uk)

Phone: 020 3879 9555



Sign up to our Access Scheme for discounts, wheelchair spaces, dedicated seats and free companion tickets.

Find out more [here](#).



You can also join our mailing list to get news about accessible events and exhibitions by email.

Find out more [here](#).