

HAYWARD GALLERY

Press Release

Date: Friday 17 September

Contact: press@southbankcentre.co.uk

Images: downloadable [HERE](#)

This press release is available in a variety of accessible formats. Please email press@southbankcentre.co.uk

Hayward Gallery unveils glistening waterfall and sculptures from Berlin-based artist Klaus Weber as part of a series of new outdoor art commissions

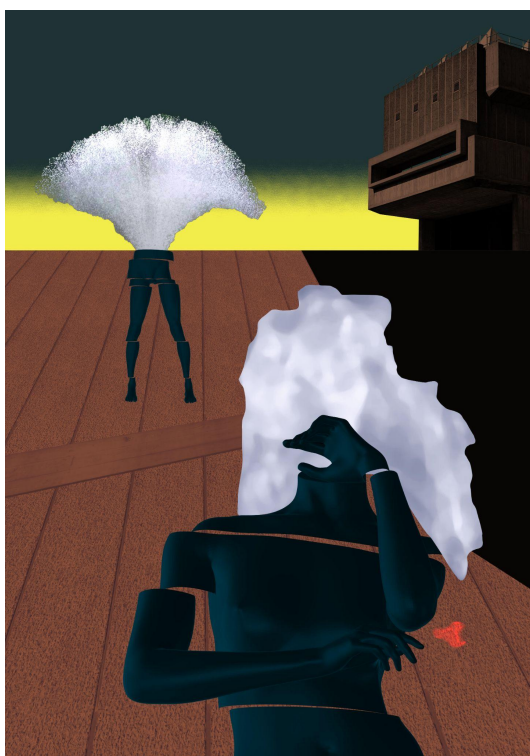


Image: Levity and Gravity by Martin Ebner & Klaus Weber, 2021

- A brand-new sculpture commission from German artist **Klaus Weber** will be on display outside the world-renowned Hayward Gallery
- *Thinking Fountains* features two bronze figures emitting jets of water and a waterfall cascading down from an elevated walkway
- The sculptures are part of a growing programme of free outdoor art installations transforming the Southbank Centre and Hayward Gallery spaces

A glistening waterfall and sculpture installation from German contemporary artist Klaus Weber will be unveiled this week outside the landmark Hayward Gallery. The commission, titled *Thinking Fountains* (2021), continues the Southbank Centre's growing programme of free outdoor installations offering visitors and passersby an unexpected opportunity to engage with art.

Animating the Brutalist architecture of the Hayward Gallery, *Thinking Fountains* features two larger-than-life bronze figures spouting water and a waterfall that cascades down from an elevated walkway. With forms derived from contemporary mannequins, both sculptures are also inspired by historical traditions of portal sculptures that adorned the facades of Gothic cathedrals.

Peacock, one of the two bronze sculptures, is a hybrid human whose hips emit an exuberant jet of water, suggesting a magnificent bird fanning its plumage. At intervals, the cascade of water deluges *Peacock*, extinguishing its plumes and marking a tension between what Klaus Weber calls 'gravity and levity'. *Thinking Fountain*, the second figure, assumes a pose of contemplation. A decorative bouquet of water surges upwards from its neck indirectly suggesting the presence of a head - or flowing streams of thought - before falling back to spill down over its bronze body.

Together both sculptures embody the hopes of the artist, Klaus Weber, which is to "*widen our viewpoint, sharpen our senses and make new connections in our brains.*"

Thinking Fountains continues a series of artworks that are transforming the Southbank Centre and Hayward Gallery spaces into a lively sculpture park. *Thinking Fountains* follows the Hayward Gallery's first Bagri Foundation Commission, *Samovar* (2021) by the art collective Slavs and Tatars, which was recently installed outside the Hayward Gallery.

Klaus Weber says of *Thinking Fountains*: "*The entrance of the Hayward Gallery is rather hidden. As an admirer of this brutalist building, I wanted to install a new artistic element to be seen from further away. One of the great features of Gothic architecture (surely the ancestor of modern Brutalism) are its portal sculptures which frame the giant entrances of abbeys and cathedrals. Likewise, Thinking Fountains forms a welcoming portal, inviting the Hayward Gallery's visitors to enter and join the journey.*"

Klaus Weber was born in 1967 and is based in Berlin. Weber has had solo exhibitions at Collective, Edinburgh (2018), Nottingham Contemporary (2011), Fondazione Mora Grecco, Naples (2013), the Secession, Vienna (2008) as well as international group exhibitions and biennials, including Lyon Biennale, France (2015) and Manifesta 7, Italy (2007).

Thinking Fountains is generously supported by the Hayward Gallery Commissioning Committee and HENI, with additional support from the Rothschild Foundation. Commission made possible with Art Fund support.

Ralph Rugoff, Director at the Hayward Gallery, says: "*Klaus Weber's imaginative commission responds to the unique architecture of the Hayward Gallery, transforming our entrance into a welcoming and playful portal for visitors. Designed to evoke inspired and activated streams of thought and to associate them with our experience of visiting galleries,*

Weber's Thinking Fountains installation ingeniously updates the model of traditional public sculpture in ways that will delight and surprise both Hayward audiences and passers-by alike."

Thinking Fountains, the latest commissioned art installation outside the Hayward Gallery, is on display from September 2021.

ENDS

Link to Klaus Weber: Thinking Fountains web page [HERE](#)

NOTES TO EDITORS

For further press information, images and interview requests please contact:

Hannah Carr, hannah.carr@southbankcentre.co.uk

About the Hayward Gallery

The Hayward Gallery, part of the Southbank Centre, has a long history of presenting work by the world's most adventurous and innovative artists including major solo shows by both emerging and established artists and dynamic group exhibitions. They include those by Bridget Riley, Martin Creed, Antony Gormley, Tracey Emin, Andy Warhol, Ed Ruscha, Jeremy Deller, Anish Kapoor, René Magritte, Francis Bacon and David Shrigley, as well as influential group exhibitions such as Africa Remix, Light Show, Psycho Buildings and Space Shifters. Opened by Her Majesty, The Queen in July 1968, the gallery is one of the few remaining buildings of its style. The Brutalist building was designed by a group of young architects, including Dennis Crompton, Warren Chalk and Ron Herron and is named after Sir Isaac Hayward, a former leader of the London County Council.

About the Southbank Centre

The Southbank Centre is the UK's largest arts centre occupying a prominent riverside location that sits in the midst of London's most vibrant cultural quarter on the South Bank of the Thames. We exist to present great cultural experiences that bring people together and we achieve this by providing the space for artists to create and present their best work and by creating a place where as many people as possible can come together to experience bold, unusual and eye-opening work. We want to take people out of the everyday, every day.

The site has an extraordinary creative and architectural history stretching back to the 1951 Festival of Britain. The Southbank Centre is made up of the Royal Festival Hall, Queen Elizabeth Hall, Purcell Room and Hayward Gallery as well as being home to the National Poetry Library and the Arts Council Collection. It is also home to four Resident Orchestras (London Philharmonic Orchestra, Philharmonia Orchestra, London Sinfonietta and Orchestra of the Age of Enlightenment) and four Associate Orchestras (Aurora Orchestra, BBC Concert Orchestra, Chineke! Orchestra and National Youth Orchestra of Great Britain).

About Klaus Weber

Klaus Weber, lives and works in Berlin. He conceives works across a variety of media which are often based on multifaceted technological interconnections. By manipulating everyday structures, and exploring the impossible, Weber's projects undermine the power of functionalist rationality. Weber repetitively uses images of nature, and explores the untamable in a humorous and anarchic manner. Weber has had solo exhibitions at Collective, Edinburgh, UK (2018), Nottingham Contemporary, UK (2011), Fondazione Mora Grecco, Naples, Italy (2013), the Secession, Vienna, Austria (2008), Kunstverein Hamburg, Germany (2005) as well as international group exhibitions and biennials, including Lyon Biennale, France (2015) Manifesta 7, Italy (2007). Public commissions include Frieze Projects, London (2003) and Frieze Projects East, commissioned by Create London (2012). In 2007,

Weber's sculptural installation *The Big Giving*, was commissioned for the Hayward Gallery. Weber's work is part of private and public collections such as The Federal Collection of Contemporary Art, Germany, Phil Aarons Collection, USA, Thyssen-Bornemisza Collection, (TBA-21) Austria, Fondazione Sandretto Re Rebaudengo, Italy. Since 2017 he has been professor for sculpture at University of the Arts in Münster.

Art Fund_

About Art Fund

Art Fund is the national fundraising charity for art. It provides millions of pounds every year to help museums to acquire and share works of art across the UK, further the professional development of their curators, and inspire more people to visit and enjoy their public programmes. In response to Covid-19 Art Fund has made £3.6 million in urgent funding available to support museums through reopening and beyond, including Respond and Reimagine grants to help meet immediate need and reimagine future ways of working. Art Fund is independently funded, supported by the 131,000 members who buy the National Art Pass, who enjoy free entry to over 240 museums, galleries and historic places, 50% off major exhibitions, and receive Art Quarterly magazine. Art Fund also supports museums through its annual prize, Art Fund Museum of the Year. The shortlisted museums for Art Fund Museum of the Year 2021 are: Centre for Contemporary Art Derry~Londonderry; Experience Barnsley; Firstsite in Colchester; Thackray Museum of Medicine in Leeds; and Timespan in Helmsdale



Supported using public funding by
**ARTS COUNCIL
ENGLAND**



SOUTHBANK CENTRE
