



# SOUTHBANK CENTRE

THIS IS

# CLASSICAL MUSIC

IN THE 21ST CENTURY

SPRING/SUMMER 2026



# Welcome



We celebrate our milestone 75th anniversary in 2026 with a year of programming that captures the optimism and hope of the 1951 Festival of Britain, which bequeathed the Royal Festival Hall to the nation. From that single concert hall, we have become the UK's largest arts centre, with the addition of the Queen Elizabeth Hall and Hayward Gallery in the 1960s.

From the first wave of the conductor's baton in the opening concert in 1951, sharing the joy of classical music with as many people as possible has been central to our story. Though we never stand still, and we – along with our family of Resident Orchestras – remain committed to evolving the art form and canon for generations to come.

**Mark Ball**  
Artistic Director, Southbank Centre



In our 75th year, we are building on our proud legacy as one of the UK's leading destinations for classical music. With our six Resident Orchestras we present the second year of *Multitudes* – our multi-arts festival powered by orchestral music. Elsewhere from our Resident Orchestras, four of which are celebrating major anniversaries, Chineke! Orchestra marks ten years of championing representation in classical music. Aurora Orchestra, now in its 20th year, continues to bring music to life in unexpected ways, inviting us on stage to get up close in our *Alternative Experiences*. The Orchestra of the Age of Enlightenment reconstructs the last concert Brahms attended, in its 40th anniversary finale. The Philharmonia Orchestra is joined by Esa-Pekka Salonen, returning as their Conductor Laureate, for the orchestra's 80th birthday celebrations. And the London Philharmonic Orchestra's Principal Conductor Edward Gardner shares his passion for 20th-century music from Central Europe.

In our *Artist Residencies*, we shine a spotlight on visionary artists and fresh collaborations. We welcome back guitarist Sean Shibe for two folk-themed programmes and cello

superstar Alisa Weilerstein for two further instalments of her *FRAGMENTS* multi-year commissioning project, while Manchester Collective appears in a collaboration with Shibe and performs a new work by Cassie Kinoshi, a Southbank Centre Associate Artist. All three Resident Artists appear in our *Contemporary Edit*, alongside others who are stretching the boundaries of classical music and honouring trailblazing composers. In addition, Resident Orchestra the London Sinfonietta spotlights new voices alongside pioneering classics.

We're joined by some of the foremost artists working in keyboard and chamber music today: Pierre-Laurent Aimard, Iveta Apkalna, Martha Argerich and Dong Hyek Lim, Arod Quartet and Danel Quartet, Behzod Abduraimov, Idrisî Ensemble, Miloš Karadaglić and Andreas Ottensamer, James McVinnie, Fazil Say, United Strings of Europe, and Tamsin Waley-Cohen and Cordelia Williams.

Whether you're new to the world of classical music or a lifelong fan, we look forward to welcoming you as we celebrate the many ways that this wonderful art form has and continues to inspire and connect us.

**Toks Dada**  
Head of Classical Music, Southbank Centre

# RESIDENT ORCHESTRAS

The Southbank Centre is the proud home of six exceptional Resident Orchestras, who bring their extraordinary artistry to our spaces throughout the year. Each orchestra has its own identity, and together, we explore the depth and breadth of classical music in all its colours and forms.



© Jake Davis



© Chuko Chibb

## Aurora Orchestra

Innovative and boundary breaking, Aurora Orchestra is best known for its Orchestral Theatre productions and signature memorised performance style. Its creative learning strand reaches thousands of young people each year, from immersive performances to school classrooms to its free digital platform Aurora Classroom. This spring, Aurora performs two canon works from memory: Stravinsky's *The Rite of Spring* with a theatrical introduction, and an intimate setting of Mozart's *Jupiter* Symphony with the audience on stage.

## Chineke! Orchestra

Founded in 2015 by Chi-chi Nwanoku CBE, Chineke! Orchestra is Europe's first majority Black and ethnically diverse orchestra. Performing classical works alongside music by Black and ethnically diverse composers, the ensemble made its debut at the Southbank Centre in 2015 and became a Resident Orchestra in 2022. For Spring/Summer 2026, they're joined by two star violinists: Julián Gil Rodríguez, who also directs; and Njioma Chinyere Grevious, for Coleridge-Taylor's Violin Concerto.



To see all of our classical music events, including those from our Resident Orchestras, scan the QR code or visit our website. [southbankcentre.co.uk/classicalmusic](https://southbankcentre.co.uk/classicalmusic)



© Jason Bell

### London Philharmonic Orchestra

The London Philharmonic Orchestra has been creating thrilling orchestral experiences at the Southbank Centre since the Royal Festival Hall's opening concert 75 years ago. This spring, the orchestra brings blockbuster moments like Tchaikovsky's Violin Concerto with Anne-Sophie Mutter, Beethoven's beloved Ninth Symphony, and Brahms' Double Concerto with LPO Principals, while continuing *Harmony with Nature*, a season that celebrates our planet and humanity's place in protecting it.



© Monika Jakubowska

### London Sinfonietta

The London Sinfonietta is one of the world's leading contemporary music ensembles. Formed in 1968, it has commissioned over 470 works. Its musicians reimagine the contemporary repertoire they champion, and work with inspiring living composers and artists to create new music. They collaborate with young people, communities and the public in making projects involving film, theatre, dance and art, and their free-to-view digital channel reaches audiences around the world.



© Zen Grisdale

### Orchestra of the Age of Enlightenment

In 1986, a group of inquisitive musicians took a hard look at the orchestra and decided to start from scratch, throwing out the rule book. A single conductor? No way. Specialise in one era? Too restricting. Since then, the OAE has mesmerised and augmented the music world. Period-specific instruments have become just one element of its quest for authenticity, and its name stands for excellence, diversity and exploration.



© Marc Gascoigne

### Philharmonia Orchestra

Celebrating their 80th birthday this year, the Philharmonia Orchestra continue to bring orchestral music of the very highest quality to the widest possible audience. Principal Conductor Santtu-Matias Rouvali leads a series of spring concerts that range from Beethoven, Rachmaninov and Bruckner to UK premieres by John Adams, Gabriela Ortiz and Jonathan Dove. Pianist Víkingur Ólafsson is their Featured Artist, with guests including violinists Hilary Hahn and Lisa Batiashvili and pianist Bruce Liu.

Sunday 1 February 2026

## Philharmonia Debates... Music & Exile

Panellists from the music world and beyond discuss the role music plays in preserving cultural identity for exiled or migrant communities.

The Clore Ballroom, Level 2, Royal Festival Hall, 5.45pm

## Orchestra of the Age of Enlightenment: Mozart's World – A Little Night Music

Katherine Spencer *clarinet*

**Arriaga** Overture in F minor, Op.1; **Mozart** Clarinet Concerto; **M Haydn** Divertimento in G, MH.406; **Mozart** Serenade in G, K.525 (Eine kleine Nachtmusik)

Queen Elizabeth Hall, 7pm

## Philharmonia Orchestra: Santtu & Hilary Hahn



Santtu-Matias Rouvali *conductor*  
Hilary Hahn *violin*

**Stravinsky** Divertimento from The Fairy's Kiss arr. Stravinsky & Dushkin for orchestra;  
**Prokofiev** Violin Concerto No.2 in G minor, Op.63; **Rachmaninov** Symphonic Dances

Royal Festival Hall, 7.30pm

The Clore Ballroom, Level 2, Royal Festival Hall, 9.45pm: post-concert talk with Hilary Hahn.

Tuesday 3 February 2026

## Royal Philharmonic Orchestra: Shostakovich & Beethoven

Vasily Petrenko *conductor*  
Benjamin Grosvenor *piano*  
Yuriy Yurchuk *baritone*

**Ustvolskaya** The dream of Stepan Razin for baritone & orchestra;  
**Beethoven** Piano Concerto No.1;  
**Shostakovich** Symphony No.10 in E minor

Royal Festival Hall, 7.30pm

Wednesday 4 February 2026

## London Philharmonic Orchestra: Bohemian Rhapsodies

Edward Gardner *conductor*  
Josef Špaček *violin*

**Bacewicz** Overture; **Martinů** Violin Concerto No.2;  
**Lutostawski** Symphony No.4;  
**Janáček** Taras Bulba

Royal Festival Hall, 7.30pm

Friday 6 February 2026

## Idrisi Ensemble

The period music collective shines a light on the *trobairitz* – female troubadours on the fringes of medieval Europe – in a programme of reconstructed chants, Corsican polyphonies and Idrisi's distinctive microtonal singing.

Queen Elizabeth Hall, 8pm

Saturday 7 February 2026

## LPO Showcase: Foyle Future Firsts & RAM

Edward Gardner *conductor*  
Players from the London Philharmonic Orchestra  
LPO Foyle Future Firsts  
Students from the Royal Academy of Music

**Ligeti** Melodien; **Bartók** Dance Suite arr. Freisitzer for chamber orchestra

Royal Festival Hall, 6pm

## London Philharmonic Orchestra: The Wooden Prince

Edward Gardner *conductor*  
Galina Cheplakova *soprano*  
Agnieszka Rehlis *mezzo-soprano*  
Kostas Smoriginas *bass-baritone*  
London Philharmonic Choir

**Kaprálóvá** Rustic Suite, Op.19;  
**Szymanowski** Stabat mater;  
**Kaprálóvá** Waving farewell for voice & orchestra, Op.14; **Bartók** The Wooden Prince – ballet music

Royal Festival Hall, 7.30pm

Sunday 8 February 2026

## Philharmonia Orchestra: Marin Alsop Conducts Star Wars & The Planets



Marin Alsop *conductor*  
Sean Shibe *guitar*

**John Williams** Star Wars Suite;  
**Rodrigo** Concierto de Aranjuez for guitar & orchestra; **Holst** The Planets

Royal Festival Hall, 3pm

## Orchestra of the Age of Enlightenment: It Shall Certainly Not Bend and Crush Me Completely

Adam Fischer *conductor*

**Beethoven** Symphony No.4; Symphony No.5

Queen Elizabeth Hall, 7pm

Wednesday 11 February 2026

## London Philharmonic Orchestra: Mother Goose

George Benjamin *conductor*  
**Scriabin** Le poème de l'extase, Op.54 (Symphony No.4);  
**George Benjamin** Palimpsests;  
**Stravinsky** Symphonies of Wind Instruments (vers. rev. 1947);  
**Ravel** Ma mère l'Oye (Mother Goose), complete ballet

Royal Festival Hall, 7.30pm

Wednesday 18 February 2026

## LPO Showcase: Junior Artists

Players from the London Philharmonic Orchestra  
LPO Foyle Future Firsts  
LPO Junior Artists

Programme includes: **Zach Reading** New work (World premiere)

Royal Festival Hall, 6pm

**London Philharmonic  
Orchestra: Anne-Sophie  
Mutter Plays Tchaikovsky**



Karina Canellakis *conductor*  
Anne-Sophie Mutter *violin*

Sibelius Pohjola's daughter;  
Tchaikovsky Violin Concerto;  
Beethoven Symphony No.7

Royal Festival Hall, 7.30pm

**Thursday 19 February 2026**

**Philharmonia Chamber  
Players: Relaxed Performance**

Enjoy classical music in your own way, as the Philharmonia Orchestra gives a concert designed for anyone who would feel comfortable in a more relaxed space.

Royal Festival Hall, 6pm

**Philharmonia Orchestra:  
Runnicles Conducts  
Bruckner 8**



Donald Runnicles *conductor*

Bruckner Symphony No.8

Royal Festival Hall, 7.30pm

**Wednesday 25 February 2026**

**Philharmonia Chamber  
Players: Conductors Compose**

Svetlanov 24 Hours in the country for wind quintet; Sinopoli Numquid for oboe quartet; Esa-Pekka Salonen Homunculus for string quartet; Klemperer Excerpt from String Quartet No.7; Markevitch Galop

Royal Festival Hall, 6pm

# Explore our whole programme

The more you book,  
the more you save.

With our multi-buy  
offer, you can book  
concerts from across  
Classical Music:  
Spring/Summer 2026  
and receive a discount.

See our website  
for details.

# CONTEMPORARY EDIT

Our *Contemporary Edit* platforms artists who are redefining the possibilities of classical music, casting a new light on historic works, and helping to continue the genre's story into the future. Hear from many of our Resident Orchestras and all three of our Resident Artists as they champion new works and honour trailblazing composers with imaginative collaborations and commissions.



Aidan O'Rourke & Sean Shibe © Daniel Cook



United Strings of Europe © Dimitri Djuric



Jasdeep Singh Degun © Adam Lyons

Tradition meets innovation in the hands of sitarist Jasdeep Singh Degun, who opens our *Contemporary Edit* with spellbinding music for sitar and strings, and is joined by players from Resident Orchestra the London Philharmonic Orchestra.

Two of our Resident Artists – Sean Shibe and Manchester Collective – come together to chart a course through the world of sea shanties. In another folk-inspired collaboration, Shibe performs with fiddler Aidan O'Rourke. Elsewhere, you can hear from the next wave of artists in the fourth year of our creative partnership with the Royal Academy of Music, this year mentored by Shibe.

Celloist Alisa Weilerstein, our third Resident Artist for 2025/26, appears with two further instalments of *FRAGMENTS*, her multi-year commissioning project that interweaves new works with Bach's six Cello Suites. Manchester Collective returns with *Patterns in Repeat*, performing works by three female titans of contemporary experimental music.

United Strings of Europe spotlights Jasmin Kent Rodgman's reflective *send back the echo*, which explores the intersection of music, deafness, race and social isolation, drawing on Beethoven's experience of hearing loss.

There's more from our Resident Orchestras as the London Sinfonietta shares new works and pioneering classics, celebrating our 75th anniversary with works including Christian Mason's ethereal *In Time Entwined*, *In Space Enlaced*. The Philharmonia Orchestra continues their *Music of Today* events with music from Mexico chosen by composer Gabriela Ortiz.

And as part of *Multitudes* – our multi-arts festival powered by orchestral music – the worlds of heavy metal and orchestral music collide in a truly head-banging show from the Philharmonia, the Royal Philharmonic Orchestra collaborates with 1927 Studios in Messiaen's mind-boggling *Turangalila-Symphonie*, and the LPO presents a semi-staged performance of Alban Berg's devastating opera *Wozzeck*.

### **Jasdeep Singh Degun & Friends**

See Sat 7 Mar

### **Philharmonia Orchestra: Music of Today – Gabriela Ortiz Curates**

See Thu 12 Mar

### **London Sinfonietta: Pulse and Presence**

See Fri 13 Mar

### **Future Artists: Royal Academy of Music**

See Fri 27 Mar

### **Manchester Collective & Sean Shibe: Sea Shanties**

See Sat 28 Mar

### **Philharmonia Orchestra: Into the Void – From Wagner to Black Sabbath**

See Wed 22 Apr

### **1927 Studios x Royal Philharmonic Orchestra: Turangalila – Infinite Love**

See Thu 23 Apr

### **London Philharmonic Orchestra: Wozzeck – Wretches Like Us**

See Sat 25 Apr

### **Thick & Tight x Manchester Collective: Papillons**

See Thu 30 Apr

### **Philharmonia Orchestra: Music of Today – Composers' Academy**

See Thu 7 May

### **United Strings of Europe: Send Back the Echo**

See Sat 9 May

### **Sean Shibe & Aidan O'Rourke: Lúban**

See Sun 10 May

### **Alisa Weilerstein: FRAGMENTS – Emergence**

See Sun 17 May

### **Alisa Weilerstein: FRAGMENTS – Labyrinth**

See Sun 17 May

### **London Sinfonietta: Time Entwined**

See Thu 11 Jun

### **Manchester Collective: Patterns in Repeat**

See Sun 28 Jun

Wednesday 25 February 2026

**Philharmonia Orchestra:  
Esa-Pekka Salonen &  
Vikingur Ólafsson**



Esa-Pekka Salonen *conductor*  
Vikingur Ólafsson *piano*

**John Adams** Piano Concerto No.4  
(After the Fall) (UK premiere);  
**Ravel** Daphnis et Chloé (complete)

Royal Festival Hall, 7.30pm

Thursday 26 February 2026

**Orchestra of the Age of  
Enlightenment:  
Mozart's World –  
The Last Symphonies**

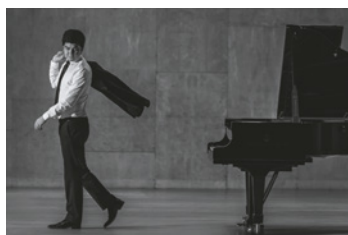
Robin Ticciati *conductor*

**Mozart** Symphony No.39;  
Symphony No.40;  
Symphony No.41 (Jupiter)

Royal Festival Hall, 7pm

Friday 27 February 2026

**Behzod Abduraimov**



Behzod Abduraimov *piano*

**Brahms** 4 Pieces, Op.119; **Czerny**  
Variations on a theme by Rode,  
Op.33; **Liszt** Après une lecture de  
Dante - Fantasia quasi sonata  
from *Années de pèlerinage*;  
**Debussy** Suite bergamasque;  
**Stravinsky** 3 Movements from  
*Petrushka* arr. for piano

Queen Elizabeth Hall, 7pm

Saturday 28 February 2026

**London Sinfonietta:  
Tōru Takemitsu –  
Between Sound and Silence**



What happens when music  
breathes, when sound drifts  
like mist or lingers like falling  
rain? Step into an evening of  
quiet beauty and reflection as  
the London Sinfonietta brings  
Takemitsu and his world to life with  
music, images and readings from  
his essays.

Purcell Room at Queen Elizabeth Hall, 7pm

**BBC Concert Orchestra:  
Cinematic Soundtracks Live  
with BBC Radio 3 Unwind**

The BBC Concert Orchestra,  
conducted by George Morton,  
performs cinematic soundtracks  
including music from *Dune: Part  
Two*, *Interstellar* and *Inception*.  
Presented by Edith Bowman.

Queen Elizabeth Hall, 8pm

Sunday 1 March 2026

**Philharmonia Orchestra:  
Vikingur Ólafsson Celebrates  
Kurtág at 100**

The Philharmonia marks  
György Kurtág's centenary by  
performing selected chamber  
and orchestral works alongside  
Bach, Schumann and Mark  
Simpson. With pianist Vikingur  
Ólafsson, cellist István Várdai  
and conductor Elena Schwarz.

Queen Elizabeth Hall, 5pm

Wednesday 4 March 2026

**London Philharmonic  
Orchestra: Tchaikovsky  
& Sibelius**

Paavo Järvi *conductor*  
Alexandre Kantorow *piano*

**Tchaikovsky** Piano Concerto No.2;  
**Sibelius** Symphony No.2 in D

Royal Festival Hall, 7.30pm

Thursday 5 March 2026

**Philharmonia Orchestra:  
Santtu Conducts Bernstein,  
Copland & Gershwin**

Santtu-Matias Rouvali *conductor*  
Frank Dupree *piano*  
Mark van de Wiel *clarinet*

**Bernstein** On the Waterfront,  
symphonic suite; **Jonathan  
Dove** Clarinet Concerto  
(Rainbow) (World premiere);  
**Copland** Clarinet Concerto;  
**Gershwin** Rhapsody in Blue  
Royal Festival Hall, 7.30pm

**Philharmonia Big Band**

Swing along to the second  
performance ever of the  
Philharmonia Big Band, with  
conductor Santtu-Matias Rouvali  
on drums.

Royal Festival Hall, post-concert event

Saturday 7 March 2026

**Jasdeep Singh Degun  
& Friends**



Sitarist Jasdeep Singh Degun  
joins players from the London  
Philharmonic Orchestra for a  
collaboration that blends Indian  
classical music with contemporary  
composition. Featuring works by  
Degun, including selections from  
*Arya* and *Anomaly*.

Purcell Room at Queen Elizabeth Hall, 8pm

Sunday 8 March 2026

### **The Bach Choir: St Matthew Passion**

Florilegium  
David Hill *conductor*  
Toby Spence *tenor, Evangelist*  
Simon Shibambu *bass, Christ*  
Lucy Crowe *soprano*  
Carolyn Dobbin *mezzo-soprano*  
Benjamin Hulett *tenor*  
Christopher Purves *bass*  
London Youth Choir

**Bach** St Matthew Passion  
(performed in English)

Royal Festival Hall, 11am  
Please note there is a long lunch interval  
between parts 1 & 2. Part 2 begins at 2.15pm.

Thursday 12 March 2026

### **Philharmonia Orchestra: Music of Today – Gabriela Ortíz Curates**

Players from the  
Philharmonia Orchestra  
Francisco Cortés-Álvarez  
Trascendiendo muros; Hebert  
Vázquez *Son crepuscular*;  
Gabriela Ortiz Corpórea  
Royal Festival Hall, 6pm

### **Philharmonia Debates... Composing Across Cultures**

The orchestra's series of debates  
around music and identity  
continues with an in-depth look  
at the intersection of musical  
traditions from around the world.

Level 5 Function Room, Green Side, Royal  
Festival Hall, 6pm

### **Royal Philharmonic Society Awards 2026**



One of classical music's biggest  
awards nights returns to our halls  
– and everyone's invited. Expect  
star guests, surprise musical acts  
and after-show festivities.

Queen Elizabeth Hall, 7pm

### **Philharmonia Orchestra: Marin Alsop & Alisa Weilerstein**

Marin Alsop *conductor*  
Alisa Weilerstein *cello*  
Arturo Márquez Danzón No.2;  
Gabriela Ortiz Cello Concerto  
(Dzonot) (London premiere);  
Rimsky-Korsakov Scheherazade  
Royal Festival Hall, 7.30pm

Friday 13 March 2026

### **London Sinfonietta: Pulse and Presence**

Christian Karlsen *conductor*  
Programme includes: Alex Paxton  
Scrunchy Touch Sweetly to Fall  
(UK premiere); Tansy Davies Soul  
Canoe (London premiere); John  
Adams Chamber Symphony  
Queen Elizabeth Hall, 7.30pm

Wednesday 18 March 2026

### **Julián Gil Rodríguez Directs Chineke! Orchestra**



Julián Gil Rodríguez *director, violin*  
Programme includes:  
Jessie Montgomery Banner for  
string quartet & orchestra; Mozart  
Sinfonia concertante in E flat for  
wind, K.297b; Sinfonia concertante  
in E flat for violin & viola, K.364  
Queen Elizabeth Hall, 7.30pm

Thursday 19 March 2026

### **Philharmonia Orchestra: Nagano Conducts Mahler's Resurrection Symphony**

Kent Nagano *conductor*  
Jane Archibald *soprano*  
Christina Bock *mezzo-soprano*  
Philharmonia Chorus

Hildegard of Bingen *O vis  
eternitatis*; Mahler Symphony No.2  
(Resurrection)

Royal Festival Hall, 7.30pm

Friday 20 March 2026

### **Fazil Say**

Fazil Say *piano*  
Bach Selection from Goldberg  
Variations, BWV.998; Fazil Say  
Piano Sonata (Yeni Hayat) (New  
life), Op.99; Nazim, Op.12 No.1; Ses,  
Op.40b; Kara Toprak (Black Earth),  
Op.8; Paganini Jazz (Variations  
on Caprice No.24 in the style of  
modern jazz)  
Queen Elizabeth Hall, 7pm

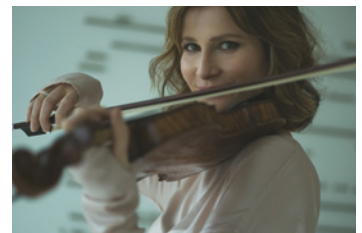
Saturday 21 March 2026

### **London Philharmonic Orchestra: Four Seasons of Buenos Aires**

Pablo Rus Broseta *conductor*  
Jonathan Davies *bassoon*  
Alice Ivy-Pemberton *violin*  
John Luther Adams Become River;  
Clarice Assad Bassoon Concerto  
(Terra) (European premiere);  
Piazzolla Cuatro Estaciones  
Porteñas (The 4 Seasons of  
Buenos Aires) arr. Desyatnikov  
(with live dance)  
Queen Elizabeth Hall, 6.30pm

Sunday 22 March 2026

### **Philharmonia Orchestra: Lisa Batiashvili Plays Tchaikovsky**



Santtu-Matias Rouvali *conductor*  
Lisa Batiashvili *violin*

Bacewicz Divertimento for  
string orchestra; Tchaikovsky  
Violin Concerto; William Walton  
Symphony No.1  
Royal Festival Hall, 3pm



# KEYBOARD MUSIC

Boundless versatility, vast emotional richness and timeless beauty: there are many reasons why the keyboard's popularity has endured for centuries. Join us to hear from some of the leading international keyboard artists of our time, including renowned performers and the brightest new talent.



Martha Argerich © Simon Paulyeta

Rising star of the piano Behzod Abduraimov appears with a characterful recital that ranges from Brahms to Stravinsky. Known for combining technical mastery with daring interpretive skill, Fazil Say joins us to perform a selection of his own works alongside excerpts from Bach's *Goldberg Variations*.

Legendary Argentinian pianist Martha Argerich, now in the eighth decade of her extraordinary career, appears with her former protégé Dong Hyeok Lim, who has established a reputation as a pianist of remarkable brilliance. Meanwhile, celebrated pianist Pierre-Laurent Aimard rises to the challenge of the second book of Bach's *The Well-Tempered Clavier*.

We welcome back former Resident Artist James McVinnie for an all-Bach programme on grand piano and the Queen Elizabeth Hall organ, while Iveta Apkalna fires up the Royal Festival Hall organ for a performance of gorgeous choral works with the State Choir Latvija.

## **Behzod Abduraimov**

See Fri 27 Feb

## **Fazil Say**

See Fri 20 Mar

## **Martha Argerich & Dong Hyeok Lim**

See Thu 2 Apr

## **James McVinnie: Bach for Organ & Piano**

See Sun 19 Apr

## **Pierre-Laurent Aimard: Bach's Well-Tempered Clavier**

See Sat 9 May

## **Iveta Apkalna & State Choir Latvija**

See Sun 7 Jun

Sunday 22 March 2026

### Arod Quartet & Danel Quartet: String Octets



The Arod Quartet and the Danel Quartet join forces for a programme of youthful brilliance. It opens with Shostakovich's Prelude and Scherzo, Op.11, and also features Octets by Mendelssohn and Enescu, both written when the composers were teenagers.

Queen Elizabeth Hall, 6pm

Wednesday 25 March 2026

### LPO Showcase: Crisis Creates



Musicians from the London Philharmonic Orchestra join participants from Crisis Creates, a project supporting people at risk of homelessness, to share original new work on the Royal Festival Hall stage.

Royal Festival Hall, 6pm

### London Philharmonic Orchestra: Voices from Finland

Robin Ticciati *conductor*  
Miina-Liisa Värelä *soprano*  
Shenyang *bass-baritone*  
YL Male Voice Choir

Lotta Wennäkoski *Zelo* (World premiere); *Sibelius Kullervo*

Royal Festival Hall, 7.30pm

Friday 27 March 2026

### Future Artists: Royal Academy of Music

Hear works and arrangements by the brilliant young musicians who have been mentored by Resident Artist Sean Shibe through a series of workshops and conversations.

Purcell Room at Queen Elizabeth Hall, 7pm

Saturday 28 March 2026

### London Philharmonic Orchestra: Beethoven's Ninth

Tan Dun *conductor*  
Elizabeth Watts *soprano*  
Hongni Wu *mezzo-soprano*  
John Findon *tenor*  
Dingle Yandell *bass-baritone*  
London Philharmonic Choir  
London Chinese Philharmonic Choir

Tan Dun Choral Concerto (Nine) (UK premiere); **Beethoven** Symphony No.9 (Choral)

Royal Festival Hall, 7.30pm

### Manchester Collective & Sean Shibe: Sea Shanties

Manchester Collective join forces with guitarist Sean Shibe for a voyage from Dowland and Purcell to traditional sea songs, The Unthanks and a new work by Ben Nobuto.

Queen Elizabeth Hall, 8pm

Sunday 29 March 2026

### Philharmonia Chamber Players

Programme to be announced.

Royal Festival Hall, 3.30pm

### Philharmonia Orchestra: Denis Kozhukhin Plays Beethoven



Ruth Reinhardt *conductor*  
Denis Kozhukhin *piano*

Gabriela Ortiz *Tzam* (UK premiere); **Beethoven** Piano Concerto No.5 (Emperor); **Mendelssohn** Symphony No.3 in A minor (Scottish)

Royal Festival Hall, 5pm

### Orchestra of the Age of Enlightenment: St John Passion



Johanna Soller *conductor*  
James Way *Evangelist*  
Peter Edge *Christ*  
Hilary Cronin *soprano*  
Helen Charlston *mezzo-soprano*  
Jonathan Hanley *tenor*  
Choir of the Age of Enlightenment

**Bach** St John Passion (performed in German, with surtitles)

Queen Elizabeth Hall, 7pm

Tuesday 31 March 2026

### OAE TOTS: Sailing Away

Join the OAE for a lively journey by boat as we sing our way to France, Switzerland and who knows where else! For ages 2 – 5 and their grown-ups.

Royal Festival Hall, 10.30am

### Philharmonia Orchestra: Verdi Requiem with Barts Choir

Ivor Setterfield *conductor*

Verdi Requiem

Royal Festival Hall, 7.30pm

Wednesday 1 April 2026

### London Philharmonic Orchestra: Pictures at an Exhibition



Edward Gardner *conductor*  
Alina Ibragimova *violin*

Mark-Anthony Turnage *Three Screaming Popes*; **Bartók** Violin Concerto No.1; **Mussorgsky** Pictures at an Exhibition

Royal Festival Hall, 7.30pm

Thursday 2 April 2026

### Martha Argerich & Dong Hyek Lim

Beloved pianist Martha Argerich appears with her protégé Dong Hyek Lim, giving you a chance to witness their inspiring musical partnership live on the Royal Festival Hall stage. Programme to be announced.

Royal Festival Hall, 7pm

Wednesday 8 April 2026

### London Philharmonic Orchestra: Beethoven's Pastoral Symphony

Kirill Karabits *conductor*  
Nikolaj Szeps-Znaider *violin*

Anna Thorvaldsdóttir  
CATAMORPHOSIS; Bruch Violin Concerto No.1; Beethoven Symphony No.6 (Pastoral)

Royal Festival Hall, 7.30pm

Friday 10 April 2026

### London Philharmonic Orchestra: Brahms' Double



Jonathon Heyward *conductor*  
Pieter Schoeman *violin*  
Kristina Blaumane *cello*

Dvořák Overture, In Nature's Realm; Brahms Double Concerto for violin & cello; Schumann Symphony No.4

Royal Festival Hall, 7.30pm

Saturday 11 April 2026

### The National Youth Orchestra

See 160 of the country's most talented teenage musicians performing epic music, including excerpts from Prokofiev's *Romeo and Juliet*, conducted by Alpesh Chauhan. For ages 7+.

Royal Festival Hall, 7.30pm

Sunday 12 April 2026

### Philharmonia Debates... Music & Sexuality

Ahead of the evening's concert, a panel debates the impact of sexuality on the music composers write, and how awareness of their sexuality affects performers and listeners.

The Clore Ballroom, Level 2, Royal Festival Hall, 1.15pm

### Philharmonia Orchestra: Bruce Liu Plays Ravel



Ryan Bancroft *conductor*  
Bruce Liu *piano*

Britten 4 Sea Interludes from Peter Grimes; Ravel Piano Concerto in G; Tchaikovsky Symphony No.5

Royal Festival Hall, 3pm

Wednesday 15 April 2026

### London Philharmonic Orchestra: Carnival of the Animals

Lidiya Yankovskaya *conductor*  
Tomoko Mukaiyama *piano*

Dvořák Symphony No.7; Ryan Carter Piano Concerto (World premiere); Saint-Saëns The Carnival of the Animals with film animation by Sandra Albukrek

Queen Elizabeth Hall, 7.30pm

Friday 17 April 2026

### London Philharmonic Orchestra: Terence Blanchard – A Requiem for Katrina



Daniela Candillari *conductor*  
Terence Blanchard *trumpet*  
The Terence Blanchard Quintet

Ellington The River Suite; Terence Blanchard A Tale of God's Will: A Requiem for Katrina

Royal Festival Hall, 7.30pm

Sunday 19 April 2026

### Philharmonia Orchestra: Nicola Benedetti Plays Elgar

Cristian Măcelaru *conductor*  
Nicola Benedetti *violin*

Elgar Violin Concerto; Chaminade Callirhoé Suite; Debussy La mer

Royal Festival Hall, 3pm

### James McVinnie: Bach for Organ & Piano



James McVinnie offers a rare chance to hear Bach on both piano and organ in one recital. His programme moves from the elegance of the *French Suite* in E flat and the exuberance of the *Italian Concerto* to organ works including the Sonata in E minor, Chorale Preludes, and Preludes and Fugues.

Queen Elizabeth Hall, 7pm



# MULTITUDES

A MULTI-ARTS  
FESTIVAL POWERED BY  
ORCHESTRAL MUSIC

THU 16 APR – FRI 1 MAY

Following a breathtaking first edition, our festival returns with more multi-sensory performances that open new doors into the world of classical music. Join us for collaborations between outstanding orchestras and ensembles – including many of our Resident Orchestras – and creatives from across the worlds of visual arts, theatre and dance.

Aurora Orchestra brings its signature memorised approach to Stravinsky's *The Rite of Spring* to open this year's festival, illuminating its context and ideas with design, lighting and a theatrical introduction with actors.

Looking for more radical music? Heavy metal meets classical in the Philharmonia's head-banging show, where the 100-strong orchestra applies its powerful sound to huge works of orchestral music and heavy metal anthems. A super-sized Royal Philharmonic Orchestra also turns the volume up to 11 for a performance of Messiaen's mind-boggling *Turangalila-Symphonie* in collaboration with

1927 Studios, known for merging spectacular animation with live performance.

Alban Berg's devastating opera *Wozzeck* thrums with drama, intrigue and some of the most searing music of the 20th century – the London Philharmonic Orchestra presents a semi-staged version that will blow your socks off. A video installation by artist Mat Collishaw reimagines Liszt's *Dante Symphony* as performed by the BBC Concert Orchestra, merging historic depictions of *The Divine Comedy* with modern-day visions of corruption and collapse.

In an eye-opening line-up, Manchester Collective joins forces with dance-theatre company Thick & Tight, plus electronic music artist CHAINES, for a defiant live performance with Saariaho's fragile yet fierce *Sept papillons* at its heart.

And there's even more to come in this edition of *Multitudes* – keep an eye out for further announcements.

Thursday 16 April 2026

**Aurora Orchestra:  
The Rite of Spring by Heart**



Aurora performs Stravinsky's revolutionary *The Rite of Spring* entirely from memory, under the direction of Nicholas Collon with a theatrical introduction featuring the words of the composer and his collaborators.

Royal Festival Hall, 7.30pm

Wednesday 22 April 2026

**Philharmonia Orchestra:  
Into the Void – From Wagner to  
Black Sabbath**



Rock and heavy metal anthems and orchestral music collide with epic force in the Philharmonia Orchestra's head-banging show, which sees Principal Conductor Santtu-Matias Rouvali tapping into his past as a rock drummer. Check website for details of collaborators as they're announced.

Royal Festival Hall, 7.30pm

Thursday 23 April 2026

**1927 Studios x Royal  
Philharmonic Orchestra:  
Turangalila – Infinite Love**



A super-sized Royal Philharmonic Orchestra turns the volume up to 11 for this performance of Messiaen's symphony with animations from 1927 Studios. Featuring pianist Steven Osborne, Cécile Lartigau playing ondes Martenot, with Vasily Petrenko conducting.

Royal Festival Hall, 7.30pm

Saturday 25 April 2026

**London Philharmonic  
Orchestra:  
Wozzeck – Wretches Like Us**



Berg's devastating opera thrums with drama, intrigue and searing music in this semi-staged version from the London Philharmonic Orchestra and to-be-announced collaborators, conducted by Edward Gardner and with baritone Stéphane Degout. Check website for updates.

Royal Festival Hall, 7.30pm

Wednesday 29 April 2026

**Mat Collishaw x BBC Concert  
Orchestra: Inferno**



See Liszt's *Dante Symphony* performed by the BBC Concert Orchestra alongside a film by artist Mat Collishaw, which mixes historic depictions of Dante's *The Divine Comedy* and modern-day visions of corruption and collapse.

Queen Elizabeth Hall, 7.30pm

Thursday 30 April 2026

**Thick & Tight x Manchester  
Collective: Papillons**



Manchester Collective joins with dance-theatre company Thick & Tight and electronic music artist CHAINES. At the heart of the performance is Saariaho's solo cello work *Sept papillons* (*Seven Butterflies*), performed this evening by Laura van der Heijden.

Purcell Room at Queen Elizabeth Hall, 7.45pm

# ARTIST RESIDENCIES

We champion forward-thinking artists through our *Artist Residencies*, giving new ideas space to flourish and showcasing bold projects that reimagine the boundaries of classical music. In Spring/Summer 2026, we welcome back guitarist Sean Shibe, cello superstar Alisa Weilerstein and our long-standing collaborators Manchester Collective.



## Manchester Collective

Led by Co-Artistic Directors Rakhi Singh and Jasmin Kent Rodgman, Manchester Collective are a shape-shifting ensemble known for bold, cross-genre collaborations. This season, they reunite with guitarist Sean Shibe for *Sea Shanties*, a voyage from Dowland and Purcell to traditional songs and a new work by Ben Nobuto, and present *Patterns in Repeat*, exploring rhythm and embodiment in music by Meredith Monk, Cassandra Miller and Cassie Kinoshi. They also bring us *Papillons*, a striking new staging with dance duo Thick & Tight and composer and multimedia artist CHAINES, pushing classical performance into adventurous new territory.

### **Manchester Collective & Sean Shibe: Sea Shanties**

See Sat 28 Mar

### **Thick & Tight x Manchester Collective: Papillons**

See Thu 30 Apr

### **Manchester Collective: Patterns in Repeat**

See Sun 28 Jun



© Camilla Greenwell/Manchester Collective

## Sean Shibe

Guitarist Sean Shibe continues his Southbank Centre residency with a wide range of musical projects. He shows his classical chops in a performance of Rodrigo's melancholic *Concierto de Aranjuez* with the Philharmonia Orchestra, conducted by Marin Alsop; charts a course through the world of sea shanties with fellow Resident Artists Manchester Collective; and you can see how he supports the next generation of musicians through the Royal Academy mentoring programme. Shibe also joins composer and fiddle player Aidan O'Rourke in *Lùban*, an event which breaks down the boundaries between folk and classical traditions.

### **Philharmonia Orchestra: Marin Alsop Conducts Star Wars & The Planets**

See Sun 8 Feb

### **Manchester Collective & Sean Shibe: Sea Shanties**

See Sat 28 Mar

### **Sean Shibe & Aidan O'Rourke: Lùban**

See Sun 10 May

## Alisa Weilerstein

The much-loved cellist continues her Southbank Centre residency with two further instalments of *FRAGMENTS*, her multi-sensory six-part project interweaving Bach's Solo Cello Suites with 28 new commissions. In *Emergence* and *Labyrinth*, she performs Suites No.3 and No.4 alongside newly written works, all underscored with bespoke lighting, scenic architecture and costume design by a team of extraordinary creatives. You can also see Weilerstein give the UK premiere of Gabriela Ortiz's expressive cello concerto *Dzonot* in a performance with the Philharmonia Orchestra, conducted by Marin Alsop.

### **Philharmonia Orchestra: Marin Alsop & Alisa Weilerstein**

See Thu 12 Mar

### **Alisa Weilerstein: FRAGMENTS – Emergence**

See Sun 17 May

### **Alisa Weilerstein: FRAGMENTS – Labyrinth**

See Sun 17 May



© Marco Borggreve



Thursday 7 May 2026

### Philharmonia Debates... Music & Mentoring

Panellists debate the positives (and pitfalls) of the mentoring relationships that develop between music teachers and their pupils.

The Clore Ballroom, Level 2, Royal Festival Hall, 6pm

### Philharmonia Orchestra: Music of Today – Composers' Academy

Be the first to hear three new pieces created by the Philharmonia Orchestra's Composers' Academy Fellows.

Royal Festival Hall, 6pm

### Philharmonia Orchestra: Kavakos Conducts Dvořák, Schumann & Brahms



Leonidas Kavakos *conductor*  
Kian Soltani *cello*

Dvořák Overture, Vanda;  
Schumann Cello Concerto;  
Brahms Symphony No.1

Royal Festival Hall, 7.30pm

Saturday 9 May 2026

### Pierre-Laurent Aimard: Bach's Well-Tempered Clavier



Pierre-Laurent Aimard *piano*

Bach The Well-Tempered Clavier  
Book 2, BWV.870-893

Queen Elizabeth Hall, 3pm

### United Strings of Europe: Send Back the Echo



Directed by Julian Azkoul, United Strings of Europe perform Jessie Montgomery, Gareth Farr, Dame Evelyn Glennie and Beethoven, alongside Jasmin Kent Rodgman's *send back the echo*, which features Deaf actor Vilma Jackson performing in British Sign Language.

Purcell Room at Queen Elizabeth Hall, 8pm

Sunday 10 May 2026

### Sean Shibe & Aidan O'Rourke: Lùban

Folk fiddler Aidan O'Rourke joins classical guitarist and lutenist Sean Shibe as they strip back the conservative rituals around their respective genres. Mining old Scottish manuscripts, they dissolve boundaries between folk and classical, rustic and formal to create something unexpected.

Purcell Room at Queen Elizabeth Hall, 4pm

### BBC Concert Orchestra: Brahms

Anna-Maria Helsing *conductor*  
Senja Rummukainen *cello*

Sibelius Karelia Suite; Tebogo Monnagotla Cello Concerto (UK premiere); Missy Mazzoli Sinfonia (for Orbiting Spheres); Brahms Symphony No.3

Queen Elizabeth Hall, 7.30pm

Sunday 17 May 2026

### London Philharmonic Orchestra: FUNharmonics – Stan and Mabel and the Race for Space

Join the London Philharmonic Orchestra for Paul Rissmann's musical adventure *Stan and Mabel and the Race for Space*, a tale of two pets and their friends who build a rocket and blast into orbit. For ages 6+.

Royal Festival Hall, 12 noon

Royal Festival Hall foyers, from 10am: ticket holders to the performance can take part in fun pre-concert activities around the building.

### Alisa Weilerstein: FRAGMENTS



Hear the second two concerts of *FRAGMENTS*, Alisa Weilerstein's six-part series featuring 28 new commissions written in response to Bach's Cello Suites. Book *FRAGMENTS* as standalone concerts, or together for the full experience.

### Emergence

Weilerstein sets new solo cello works by Joseph Hallman, Thomas Larcher, Jeffrey Mumford and Carlos Simon against Bach's Suite No.3.

Purcell Room at Queen Elizabeth Hall, 3pm

### Labyrinth

Music by Courtney Bryan, Gabriel Kahane, Missy Mazzoli, Matthias Pintscher and Paul Wiancko is woven through Bach's Suite No.4.

Purcell Room at Queen Elizabeth Hall, 6pm

### Royal Philharmonic Orchestra: Wagner & Taneyev

Vasily Petrenko *conductor*  
Philharmonia Chorus

Mozart Overture, The Magic Flute;  
Taneyev John of Damascus for chorus & orchestra, Op.1; Wagner Symphonic excerpts from Parsifal arr. Leinsdorf for orchestra

Royal Festival Hall, 7.30pm

### Royal College of Music Symphony Orchestra: Mahler's Fifth

Kahchun Wong *conductor*  
Mariamna Sherling *piano*

Shostakovich Piano Concerto No.2; Mahler Symphony No.5

Queen Elizabeth Hall, 7.30pm



# CHAMBER MUSIC

Hear musical alchemy in action at intimate performances from small ensembles. Our events feature exceptional musicians in duos, quartets and quintets, joining forces and sparking off each other to perform works that range through history and evoke a whole universe of emotions, from tenderness to delight.



Idrisi Ensemble © Genevieve Reeves

Groundbreaking collective Idrisi Ensemble captures the spiritual heart of medieval Occitania, interlacing Armenian, Greek, Roman, French and Corsican music and giving voice to female troubadours with a selection of entrancing works.

Arod Quartet and Danel Quartet come together to perform three octets full of carefree, youthful delight. The two quartets – both celebrated in their own right – are a force to be reckoned with as they combine their formidable talents.

In another special collaboration, guitarist Miloš Karadaglić performs with clarinetist Andreas Ottensamer in a journey through time, place and musical tradition, weaving together works that span the Renaissance to the 20th century.

Finally, violinist Tamsin Waley-Cohen and pianist Cordelia Williams explore works that conjure night, slumber and dreams in a programme inspired by lullabies.

## **Idrisi Ensemble**

See Fri 6 Feb

## **Arod Quartet & Danel Quartet: String Octets**

See Sun 22 Mar

## **United Strings of Europe: Send Back the Echo**

See Sat 9 May

## **Miloš Karadaglić & Andreas Ottensamer**

See Fri 22 May

## **Tamsin Waley-Cohen & Cordelia Williams: Lullabies**

See Sat 6 Jun

# ALTERNATIVE EXPERIENCES

Bold new forms and unexpected encounters are here to be discovered in our *Alternative Experiences*. We shine a light on artists who venture into uncharted territory for live classical music and turn the concert-hall experience on its head, while our festival *Multitudes* reimagines the possibilities of large-scale orchestral music.



Aurora Orchestra © Andy Paradise/BBC

Now in its second year, *Multitudes* kicks off with Stravinsky's canonic *The Rite of Spring*, but not as you've seen it before. Aurora performs it entirely from memory, combining the music with movement, theatrical lighting and a dramatisation of the creation of the work. The result is a revelatory take on a 20th-century masterpiece.

Also in *Multitudes*, the BBC Concert Orchestra collaborates with Mat Collishaw, transforming the Queen Elizabeth Hall's spaces with a performance featuring a video installation that conjures Dante's hell with visions of modern-day corruption.

In June, Aurora is back to perform Mozart's mighty *Jupiter Symphony* by heart. It's a Royal Festival Hall performance with a twist – the audience joins the musicians on stage for a completely different, utterly thrilling concert experience.

## **Aurora Orchestra: The Rite of Spring by Heart**

See page 15

## **Mat Collishaw x BBC Concert Orchestra: Inferno**

See Wed 29 Apr

## **Aurora Orchestra: Mozart's Jupiter by Heart**

See Sun 28 Jun

Friday 22 May 2026

### Miloš Karadaglić & Andreas Ottensamer



Guitarist Miloš Karadaglić and clarinetist Andreas Ottensamer come together for an evening of music that spans Renaissance laments to contemporary works via Schubert, Falla and Piazzolla.  
Queen Elizabeth Hall, 7pm

Sunday 24 May 2026

### Corinthian Orchestra: Passion & Transcendence

Michael Seal *conductor*  
Charlie Lovell-Jones *violin*

**Strauss** Tod und Verklärung;  
**Sibelius** Violin Concerto; **Elgar** Symphony No.1

Queen Elizabeth Hall, 3pm

Tuesday 26 May 2026

### The Bach Choir: Bach's Mass in B Minor

Florilegium  
David Hill *conductor*  
Nardus Williams *soprano*  
Helen Charlston *mezzo-soprano*  
Sam Furness *tenor*  
Neal Davies *bass*

**Bach** Mass in B minor  
Royal Festival Hall, 7.30pm

Wednesday 27 May 2026

### Orchestra of the Age of Enlightenment: The Creation

Václav Luks *conductor*  
Samantha Clarke *soprano*  
Nick Pritchard *tenor*  
Choir of the Age of Enlightenment  
**Haydn** The Creation (performed in German, with surtitles)  
Royal Festival Hall, 7pm

Wednesday 3 June 2026

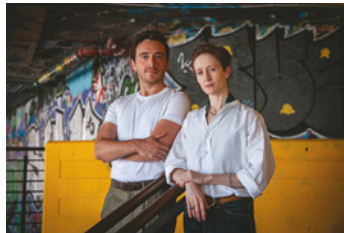
### Orchestra of the Age of Enlightenment: Life of the Sea

The OAE's new community musical adventure tells the tale of a great maritime explorer and how he comes to embark on a mission to protect the ocean from a rising tide of rubbish.

Queen Elizabeth Hall, 7pm

Thursday 4 June 2026

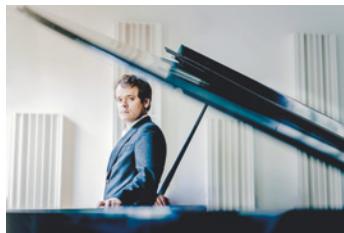
### Philharmonia Orchestra: Thick & Tight – Artists in Residence



Dance theatre company Thick & Tight have spent a year working with the Philharmonia Orchestra as Artists in Residence – see their take on the orchestra's 80-year history.

The Clore Ballroom, Level 2, Royal Festival Hall, 6pm

### Philharmonia Orchestra: Santtu Conducts a Strauss Extravaganza



Santtu-Matias Rouvali *conductor*  
Benjamin Grosvenor *piano*

**Strauss** Don Juan; Burleske in D minor for piano & orchestra; Symphonia domestica; Waltz sequence No.1 from Der Rosenkavalier

Royal Festival Hall, 7.30pm

Friday 5 June 2026

### Royal Philharmonic Orchestra: Hisaishi & Scriabin

Vasily Petrenko *conductor*  
Alexander Edmundson *horn*  
Ben Hulme *horn*  
Katy Woolley *horn*

**Rachmaninov** The Isle of the Dead;  
**Joe Hisaishi** The Border Concerto for 3 horns and orchestra (London premiere); **Scriabin** Symphony No.3 in C (The Divine Poem)

Royal Festival Hall, 7.30pm

Saturday 6 June 2026

### Tamsin Waley-Cohen & Cordelia Williams: Lullabies



Violinist Tamsin Waley-Cohen and pianist Cordelia Williams bring together music that drifts between lullaby, nocturne and dream. The programme includes Dvořák's *Songs my mother taught me*, Arvo Pärt's *Spiegel im Spiegel* and the world premiere of *Babylonian Lullaby* by Freya Waley-Cohen.

Purcell Room at Queen Elizabeth Hall, 3pm

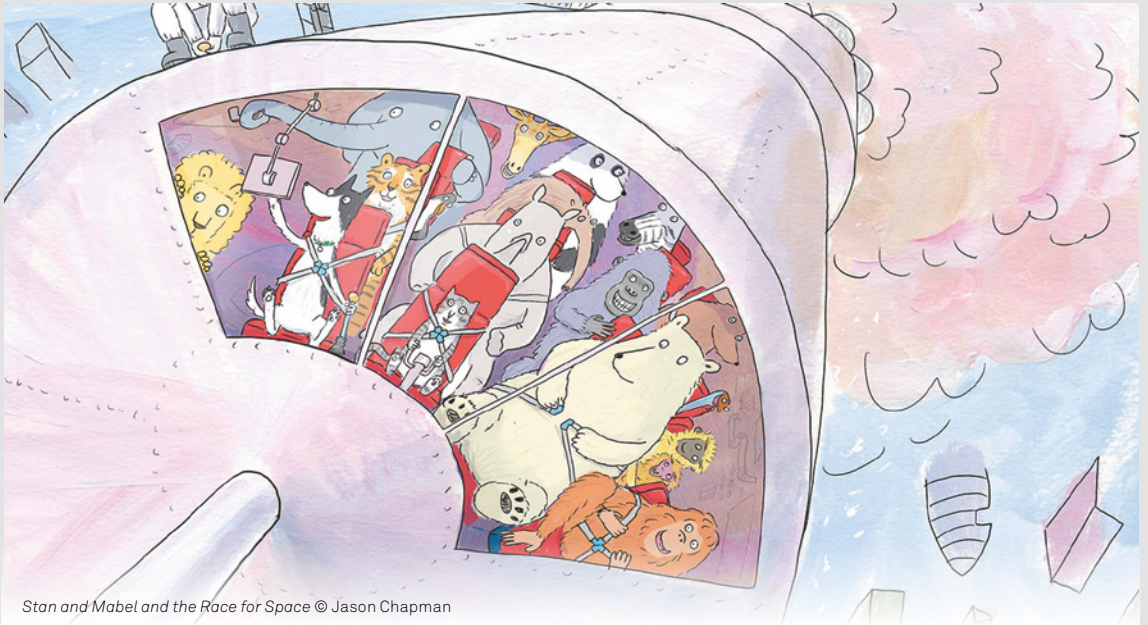
### Game Music Festival: The Infernal Symphony

The London Mozart Players join forces with the Hertfordshire Chorus for a performance of the darkly atmospheric music from the *Diablo* video game series, conducted by Marek Wroniszewski.

Royal Festival Hall, 8pm

# FAMILY CLASSICAL CONCERTS

Meet music-loving animals, a maritime explorer and weird and wonderful instruments at our family-friendly events, presented year-round in collaboration with our Resident Orchestras. Little ones can discover the wonder of classical music for themselves – and bring you along for the adventure!



Stan and Mabel and the Race for Space © Jason Chapman

Introduce your youngest family members to classical music at our Resident Orchestras' long-running series of interactive family concerts: *OAE TOTS* from the Orchestra of the Age of Enlightenment, for ages two to five, and the London Philharmonic Orchestra's *FUNharmonics*, for ages five and over.

Stan the dog and Mabel the cat embark on an epic escape in May's *FUNharmonics*, featuring music by Paul Rissmann and words and illustrations by Jason Chapman – come along for the free pre-concert activities, too.

Meanwhile, the OAE is ocean-bound, as their latest community musical adventure introduces us to a great maritime explorer. Together, we follow the music to help protect the ocean from a rising tide of rubbish.

## **OAE TOTS: Sailing Away**

See Tue 31 Mar

## **FUNharmonics: Stan and Mabel and the Race for Space**

See Sun 17 May

## **Orchestra of the Age of Enlightenment: Life of the Sea**

See Wed 3 Jun

Sunday 7 June 2026

### Iveta Apkalna & State Choir Latvija



Organist Iveta Apkalna is joined by the State Choir Latvija for an afternoon of music for organ and choir in all its grandeur and intimacy. The programme spans Byrd and Purcell, through Elgar and Britten, and to contemporary composers Thierry Escaich and Lionel Rogg.

Royal Festival Hall, 3pm

### Chineke! Orchestra: Coleridge-Taylor Violin Concerto



Joseph Young *conductor*  
Njjioma Chinyere Grevious *violin*

**Carlos Simon** 4 Black American Dances; **Coleridge-Taylor** Violin Concerto in G minor, Op.80; **Price** Symphony No.1 in E minor

Queen Elizabeth Hall, 7.30pm

Wednesday 10 June 2026

### Orchestra of the Age of Enlightenment: Symphonie Fantastique

Sir Simon Rattle *conductor*  
Timothy Ridout *viola*

**Berlioz** Harold en Italie; Symphonie fantastique

Royal Festival Hall, 7pm

Thursday 11 June 2026

### London Sinfonietta: Time Entwined

Geoffrey Paterson *conductor*

Programme includes:

**Christian Mason** In Time Entwined, In Space Enlaced for ensemble & 36 audience harmonicas; **James B Wilson** New work (World premiere); **Birtwistle** Secret Theatre

Queen Elizabeth Hall, 7.30pm

Wednesday 24 June 2026

### Orchestra of the Age of Enlightenment: Vienna 1897 – Brahms' Last Concert



Maxim Emelyanychev *conductor*  
Steven Isserlis *cello*

**Brahms** Symphony No.4; **Dvořák** Cello Concerto; **Haydn** Symphony No.73 (La chasse)

Queen Elizabeth Hall, 7pm

Saturday 27 June 2026

### Game Music Festival: Ballads of the Underworld

The London Mozart Players perform the fiery, folk-infused music of *Hades* and *Hades II*, joined by vocalists from the original soundtrack. Austin Wintory conducts.

Royal Festival Hall, 1.30pm

### Game Music Festival: Persona Grooves

The London Mozart Players team up with Bartosz Pernal and his Big Band for a groove-driven concert of music from *Persona 3, 4 & 5*.

Royal Festival Hall, 8pm

Sunday 28 June 2026

### Aurora Orchestra: Mozart's Jupiter by Heart



Sit on stage and get up close to Aurora as they perform Mozart's final and grandest symphony entirely from memory under conductor Nicholas Collon.

Royal Festival Hall, 2pm & 4pm

### Manchester Collective: Patterns in Repeat



Manchester Collective explore repetition and transformation in music from Meredith Monk and Cassandra Miller, alongside a new work by Cassie Kinoshi. Expect hypnotic textures, shifting patterns and new sounds for mixed ensemble.

Queen Elizabeth Hall, 4pm

# THANK YOU

Your continued and generous support enables us to keep doing what we're doing, bringing millions of people together by opening up the unique art spaces that we care for. In particular, we would like to thank:

## **Sponsors and Partners**

Bloomberg Philanthropies  
Edwardian Hotels  
HB Reavis  
Sea Containers  
TCL  
Van Cleef & Arpels

## **Corporate Members**

5654 & Company  
Almacantar  
Bloomberg  
Christian Dior Couture  
Imperial Health Charity  
Mishcon de Reya  
Sotheby's

## **Grantmakers**

Art Fund  
Arts Council England Lottery Funded  
The Baring Foundation  
City Bridge Foundation  
Durjoy Bangladesh Foundation (DBF)  
Garfield Weston Foundation  
The Goethe-Institut London  
Institut für Auslandsbeziehungen (ifa)  
The Italian Cultural Institute in London  
The Japan Foundation  
The Japan House London Trust  
The John S Cohen Foundation  
The Karlsson Játiva Charitable Foundation  
Korea Foundation  
Kukje Art and Culture Foundation  
Ministry of Culture, Taiwan (R.O.C.)  
Philip and Irene Toll Gage Foundation  
RC Foundation, Taiwan (R.O.C.)  
Samsung Foundation of Culture  
T.S. Eliot Foundation  
Yang Won Sun Foundation

## **Patrons & Major Donors**

Kate & Ajay Agarwal  
anonymous art project  
Nathalie Aureglia-Caruso  
Laura Bailey  
Marc & Lynne Benioff  
Big Give Foundation  
Michael Blank  
Tom & Jo Bloxham  
BLUM Los Angeles, Tokyo, New York  
The Rory and Elizabeth Brooks Foundation  
Simon Morris & Annalisa Burello  
Max & Monique Burger and the TOY family  
Burke Family Foundation  
Piers D Butler  
Sarah Cannon  
Matt & Pia Cohler

Marie-Laure de Clermont-Tonnerre  
Lady Alison Deighton  
Maryam Eisler  
Dr Paul Ettlinger  
Bridgett & Bruce Evans  
Nicoletta Fiorucci Foundation  
The Form Foundation  
Gagosian  
Galerie Barbara Wien, Berlin  
Galerie Chantel Crousel  
Galerie Nathalie Obadia  
Gillian Jason Gallery  
Glenstone Museum  
Lydia & Manfred Gorvy  
Alexander Graham  
Professor Lynda Gratton & The Hon Sir Nigel Boardman  
Lisa Honeyman & Baer Pettit  
Pippa Hornby  
Mike & Antonia Hussey  
Mary & Daniel James  
David & Clare Kershaw  
Shareen Khattar Harrison  
kurimanzutto, Mexico City / New York  
Wendy Lee  
Lehmann Maupin  
David Maclean  
Tristin & Martin Mannion, Boston, MA  
Marian Goodman Gallery  
Liz & Luke Mayhew  
Jane & David Metter  
Misso Family  
Rahul Moodgal  
Pace Gallery  
Marshall & Véronique Parke  
Perrotin  
The Roberts Institute of Arts  
The Roger and Ingrid Pilkington Charitable Trust  
Bianca & Stuart Roden  
Corinne & Robert Rooney  
Sir Paul & Lady Jill Ruddock CBE  
Danielle Ryan  
William Sargent & Sandhini Poddar  
Eleanor & Francis Shen  
David and Jennifer Sieff Charitable Trust  
Sprüth Magers  
Malek & Maria Sukkar  
Thomas Dane Gallery  
Tioc Foundation  
Lara Veroner Gubitosi  
Catherine Walsh  
George Wells  
White Cube  
Yancey Richardson Gallery  
Jenny Yeh, Winsing Arts Foundation  
Anna & Michael Zaoui  
David Zwirner Gallery

## **Artistic Director's Circle**

Roger & Alison Heath  
Dr Christopher & The Lady Juliet Tadgell  
David Zwirner Gallery

## **Directors' Circle**

Brian Abel  
The Hon. David Bernstein  
Karl Otto & Ingemo Bonnier  
Richard Buxton  
Sir Ronald & Lady Cohen  
Jill Cramphorn  
Stefan Cross  
Adam Dustagheer  
Sarah Elson  
Jacqueline & Michael Gee  
Dr Peter Guider  
Malcolm Herring  
Dr Patsy Hickman  
Ralph & Yolande Kanza  
Mr Karpukhovich & Mrs Litvintseva  
Donovan Kelly & Ann Wood  
Colin Kirkpatrick  
Sybil Kretzmer  
Steven Larcombe  
Varda Lotan & Angus Braham  
Robert McHenry & Sally Lloyd-Bostock  
Mrs Kathrine Palmer  
Ceinwen & Jonathan Rees  
Roberta & Stephen Rosefield  
Anand & Lena Saggarr  
Sue Sheridan OBE  
Matthew Slotover & Emily King  
Mark Smith & Geraldine Wong-Smith  
Andrew Smith  
Jo & Toby Thomson

*And all those who wish to remain anonymous*

## **Governors**

Misan Harriman *Chair*  
Luke Mayhew *Deputy Chair*  
Kieron Boyle  
Anais Hayes  
Dame Vivian Hunt  
Mike Hussey  
Sir Roly Keating  
Jerome Misso  
Ndiri Okezie OBE  
Sandy Rattray  
Sir William Sargent  
Libby Savill  
Lynne Shamwana  
Leigh Tavaziva

*With thanks to all our Governors for their support of the classical music programme.*

# Delius: Decompressed

Rediscover classical in hi-res audio

A new  
classical  
and jazz  
streaming  
service

- ▶ Reviews and daily articles from our team of music experts
- ▶ Fair remuneration for artists and composers with our innovative pay-per-second model
- ▶ Hi-Res audio and over 70,000 digital booklets



[prestomusic.com/streaming](https://prestomusic.com/streaming)

Listen now  
**FREE 30**  
day trial



## SOUTHBANK CENTRE

**Love what we do?**

**Why not support our work  
and get closer to the art?**

You can support us year-round by joining our family of Members and supporters, with different levels of access to our artistic programme. You'll enjoy the first chance to book presale tickets, your own Members' Lounge and never pay booking fees.

Your support will help us to deliver life-changing participation projects and a programme of free events to help open up the arts to all.

Find out more at [southbankcentre.co.uk/join](https://southbankcentre.co.uk/join)

London Philharmonic Orchestra Junior Artists,  
© Benjamin Ealovega

# Royal Philharmonic Orchestra

X

## Vasily Petrenko

A season of concerts that reach beyond the ordinary, with music to make your ears tingle and your heart soar.

Tue 3 Feb 2026, 7.30pm

### Shostakovich x Beethoven

**Ustvolskaya** The Dream of Stepan Razin  
**Beethoven** Piano Concerto No.1  
**Shostakovich** Symphony No.10

**Vasily Petrenko** Conductor  
**Yuriy Yurchuk** Baritone  
**Benjamin Grosvenor** Piano

*This concert is generously supported by The Tong Family*

Thu 23 Apr 2026, 7.30pm

### Turangalîla: Infinite Love

**Messiaen** Turangalîla-Symphonie

**Vasily Petrenko** Conductor  
**Steven Osborne OBE** Piano  
**Cécile Lartigau** Ondes Martenot

*This performance is part of the  
Southbank Centre's Multitudes festival*

Sun 17 May 2026, 7.30pm

### Wagner x Taneyev

**Mozart** The Magic Flute: Overture  
**Taneyev** John of Damascus  
**Wagner** Parsifal: Orchestral Suite

**Vasily Petrenko** Conductor  
**Philharmonia Chorus**

Fri 5 Jun 2026, 7.30pm

### Hisaishi x Scriabin

**Rachmaninov** Isle of the Dead  
**Hisaishi** The Border Concerto for 3 Horns  
and Orchestra *London premiere*  
**Scriabin** Symphony No.3, 'The Divine Poem'

**Vasily Petrenko** Conductor  
**Alexander Edmundson** Horn  
**Ben Hulme** Horn  
**Katy Woolley** Horn

Book online at [rpo.co.uk/RPOxVP](https://rpo.co.uk/RPOxVP)



Supported using public funding by  
**ARTS COUNCIL  
ENGLAND**

**SOUTHBANK  
CENTRE**

# WELL & BOOT

**BEER. WINE. COCKTAILS. PINCHOS.**

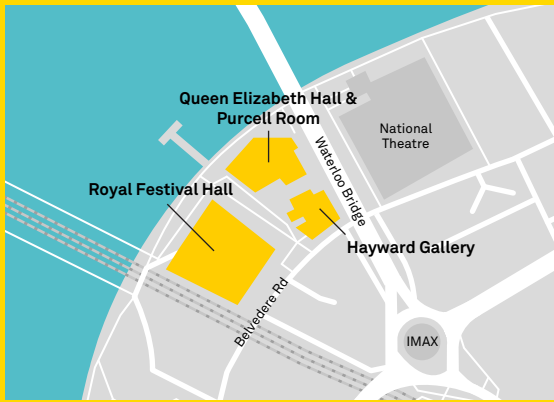
Open 7am to 11pm, think morning artisanal coffee & fresh breakfast items, lunchtime pinchos & catch-ups, and after work or evening unwinding.

Stylish, sustainable, and designed for every moment of your day.



[wellandboot.co.uk](http://wellandboot.co.uk)   

*The Balcony / Waterloo Station / SE1 7LY*



## About the Southbank Centre

We're the UK's largest centre for the arts and one of the nation's top five visitor attractions, showcasing the world's most exciting artists at our venues in the heart of London. As a charity, we bring millions of people together by opening up the unique art spaces that we care for.

The Southbank Centre is made up of the Royal Festival Hall, Queen Elizabeth Hall, Purcell Room, Hayward Gallery, National Poetry Library and Arts Council Collection. We're also one of London's favourite meeting spots, with lots of free events and places to relax, eat and shop next to the Thames.

If you'd like to get in touch, our address is Southbank Centre, Belvedere Road, London, SE1 8XX, or email [hello@southbankcentre.co.uk](mailto:hello@southbankcentre.co.uk)

## Eat, drink & shop

Eating, drinking and shopping? Take in the views over food and drinks at our on-site bars and cafes, including the Seventy5th Balcony Bar on Level 5 of the Royal Festival Hall, and the Festival Bar & Kitchen and Ballroom Cafe on Level 2. Visit our shops for products inspired by our great cultural experiences, iconic buildings and central London location. Find more to explore on-site at Beany Green, Comptoir Libanais, Côte Brasserie, Flat Iron, Foyles, Giraffe, Honest Burgers, La Gamba, Las Iguanas, Pret, Strada, Skylon, wagamama and Wahaca. Don't forget the Southbank Centre Food Market, open Friday to Sunday and bank holiday Mondays.

[southbankcentre.co.uk/foodanddrink](https://southbankcentre.co.uk/foodanddrink)

## Access

The Southbank Centre is accessible to all and level access is available to all of our venues. For access information, see our website. [southbankcentre.co.uk/access](https://southbankcentre.co.uk/access)

To receive publications in alternative formats and for further information, email [accesslist@southbankcentre.co.uk](mailto:accesslist@southbankcentre.co.uk) or phone 020 3879 9555



## How to book tickets

Online [southbankcentre.co.uk](https://southbankcentre.co.uk)

By phone 020 3879 9555

See all of our ticket terms and conditions below. [southbankcentre.co.uk/website-ticket-terms](https://southbankcentre.co.uk/website-ticket-terms)

Children aged 7+ are welcome at most Southbank Centre classical concerts, except where indicated. Under-12s must be accompanied by an adult on our site. See our website for information about concessions.

## Stay in the know

Subscribers to our email updates are the first to hear about new events, offers and competitions. Just head to our website to sign up.

## Join and support

We have a range of Membership levels, with benefits including presales to all of our events, free entry to the Hayward Gallery, no booking fees, a Members' Lounge, and discounts at selected retailers and restaurants.

The Southbank Centre is a registered charity. We rely on support from kind individuals to help us deliver a vibrant programme that everyone can access. As a supporter, you can get closer to our work and see how your support makes a difference.

[southbankcentre.co.uk/join](https://southbankcentre.co.uk/join)

Credits: Hilary Hahn © Chris Lee; Sean Shibe © Kaupo-Kikkas; Anne-Sophie Mutter © Japan Arts; Donald Runnicles © Robert F. Kusel; Víkingur Ólafsson © Ari Magg; Behzod Abduraimov © Nissor Abdourazakov; Tōru Takemitsu © Tōru Takemitsu; Jasdeep Singh Degun © Adam Lyons; Royal Philharmonic Society Awards 2026 © Mark Allen; Chineke! Miles Brett, Sarah Martin, Didier Osindero © Ntando Brown; Lisa Batiashvili © Christ Singer; Arod Quartet © Julien-Benhamou; Crisis Creates © James Tye; Denis Kozhukhin © Marco Borggreve; Johanna Soller © Simon Pauly; Alina Ibragimova © Joss McKinley; Jonathon Heyward © Laura Thiesbrummel; Bruce Liu © Bartek Barczyk; Terence Blanchard © Cedric Angeles; James McVinnie © Shervin Lainez; Aurora Orchestra © Andy Paradise / BBC; Santtu-Matias Rouvali © Marco Borggreve; Turangalila © Paul Barritt; Stéphane Degout © Cedric Roulliat; Inferno © Mat Collishaw; Thick & Tight © Darren Evans; United Strings Of Europe: Send Back the Echo © Dimitri Djuric; Leonidas Kavakos © Jan-Olav Wedin; Pierre-Laurent Aimard © Julia Wesely; Alisa Weilerstein © Cole Carrico; Miloš Karadaglić © Christoph Köstlin; Thick & Tight © Marina Vidor; Benjamin Grosvenor © Andrej Grlic; Cordelia Williams © Benjamin Ealovega; Iveta Apkalna © Aiga Redman; Violinist from Chineke! Orchestra © Courtesy Chineke! Orchestra; Steven Isserlis © Satoshi Aoyagi; Nicholas Collon © Julian Guidera; Cassie Kinoshi © Mike Skelton.

Listings correct at time of going to press.

The Southbank Centre is a registered charity no. 298909



Supported using public funding by  
**ARTS COUNCIL  
ENGLAND**

**[Recycled  
logo here]**