

SOUTHBANK CENTRE

THIS IS

CLASSICAL MUSIC

IN THE 21ST CENTURY

AUTUMN/WINTER 2025/26



Welcome



Classical music's power lies in its ability to speak directly to our human experience, to connect us to feelings of joy and ecstasy and loss and sadness. By presenting celebrated works from throughout history alongside modern-day narratives and innovative retellings, our programme highlights the incomparable storytelling and emotional punch of the art form.

The Southbank Centre's own story is one of musical excellence and innovation. With our Resident Orchestras and Resident Artists, our Autumn/Winter 2025/26 programme builds upon that legacy, creating new ways for audiences to experience the rich and varied emotions and stories of classical music – in and beyond the concert hall.

Mark Ball
Artistic Director, Southbank Centre



At the Southbank Centre, we continue to support the creative vision of world-class artists, and provide audiences with an unrivalled opportunity to experience, live in person, the full range of classical music.

Alisa Weilerstein, all begin their residencies in the *Opening Weekend*.

Spotlighting pioneering artists, the *Contemporary Edit* features Resident Orchestra the London Sinfonietta, marking 100 years of Boulez, and Associate Artist Conor Mitchell debuts his radical new opera with the Belfast Ensemble.

Our *Alternative Experiences*, many presented as the late-night part of double bills throughout the programme, use immersive formats and relaxed settings to provide a different way of experiencing classical music, outside the concert hall.

We're joined by world-leading keyboard and chamber music artists: Attacca Quartet, Alexandra Dariescu, Mahan Esfahani, Boris Giltburg, Benjamin Grosvenor, Stephen Hough, Daniel Hyde, Tiffany Poon, Claire M Singer with London Contemporary Orchestra, Viano Quartet, Raphael Wallfisch and ZRI.

As you can see, our programme creates many different ways for people to connect with classical music. We are proud to be a place where people come together to experience the wonder of this art form.

Toks Dada
Head of Classical Music, Southbank Centre

Of our family of six Resident Orchestras, four are celebrating major anniversaries this year. Appearing in our *Opening Weekend* led by their Principal Conductors, the Philharmonia Orchestra begins its 80th year with former Southbank Centre Resident Artist Víkingur Ólafsson, and the London Philharmonic Orchestra opens with a work by their new Composer-in-Residence George Benjamin. In its 20th year, Aurora Orchestra continues its pioneering work of introducing new audiences to classical music at family show *Meet the Instruments*, while we celebrate Chineke! Orchestra's transformative work in classical music in its 10th anniversary year. Later, the Orchestra of the Age of Enlightenment packs its 40th year celebrations with friends old and new.

In our *Artist Residencies*, we champion some of the most forward-thinking artists working in classical music today. The returning Manchester Collective and our new residents for 2025/26, guitarist Sean Shibe and cellist

OPENING WEEKEND

Capturing the storytelling power of classical music, our *Opening Weekend* showcases the transformative experiences and world-class artists that can be found throughout our Autumn/Winter programme. We're joined by many of our Resident Orchestras and all three of our Resident Artists across the weekend.



Alisa Weilerstein © Jason Wilcox

The *Opening Weekend* gets underway with epic orchestral music from the Philharmonia Orchestra, which begins its 80th birthday celebrations with Víkingur Ólafsson performing Beethoven's Piano Concerto No.3. The following evening, there is more glorious piano music, from Resident Orchestra the London Philharmonic Orchestra joined by Yefim Bronfman – this time, Beethoven's *Emperor* Concerto.

Resident Orchestras Aurora Orchestra and Chineke! Orchestra feature in the *Opening Weekend* for the first time, both celebrating major birthdays: their 20th and 10th, respectively. Aurora introduces the whole family to classical music, while we celebrate Chineke!'s transformative work in the genre with the chance to hear their Junior Orchestra, before Chineke! Orchestra appears with a star-studded line-up.

Meanwhile, the BBC Concert Orchestra presents a live broadcast edition of BBC Radio 3's *Friday Night Is Music Night*, with an enchanting evening of music from TV period dramas.

Also, for the first time, all of this season's Resident Artists feature in the *Opening Weekend*: Manchester Collective returns with a transcendent event inspired by John Adams' *Shaker Loops*; cellist Alisa Weilerstein presents two instalments of *FRAGMENTS*, her ambitious commissioning project around Bach's Cello Suites; and guitarist Sean Shibe appears with GBSR Duo and 12 Ensemble for Oliver Leith's *Doom and the Dooms*.

The US-based Attacca Quartet takes the stage here for the first time, performing music by Dowland, Philip Glass and Arvo Pärt, and Boris Giltburg gives his first solo recital here, in our Queen Elizabeth Hall, playing Rachmaninov's complete Preludes.

Thursday 25 September 2025

Philharmonia Orchestra: Santtu & Víkingur Ólafsson

Santtu-Matias Rouvali *conductor*
Víkingur Ólafsson *piano*

Gabriela Ortiz Si el oxígeno fuera verde (World premiere); Beethoven Piano Concerto No.3; Saint-Saëns Symphony No.3 (Organ)

Royal Festival Hall, 7.30pm
Tickets from £17*

The Clore Ballroom, Level 2, Royal Festival Hall, 6.30pm: Insights Talk. An introduction to the Philharmonia's 80th birthday season. Free

Attacca Quartet: Dowland, Glass & Pärt



Programme includes:

Arvo Pärt Summa; Fratres;
Dowland Flow my tears (Lachrimae Pavane); Philip Glass Quartet Satz; Clemens non Papa Ego flos campi; Bennet Weep, O mine eyes; Philip Glass String Quartet No.3 (Mishima)

Queen Elizabeth Hall, 8pm
Tickets from £17*

Friday 26 September 2025

Manchester Collective: Shaker Loops

The innovative ensemble is joined by Lancashire-based poet Christ Bryan for a performance of John Adams' transcendent *Shaker Loops*. The programme also features music by Dobrinka Tabakova, Kaija Saariaho and more.

Queen Elizabeth Hall, 7pm
Tickets from £17*

Friday 26 September 2025

BBC Concert Orchestra: Friday Night Is Music Night – Bridgerton and Beyond



Under the baton of conductor Karen Ni Bhroin, the BBC Concert Orchestra performs music from the soundtracks of period dramas including *Bridgerton* and *Downton Abbey*. Expect an eclectic mix of styles from Vivaldi through to Ariana Grande.

Royal Festival Hall, 7.30pm
Tickets from £17*

Saturday 27 September 2025

Alisa Weilerstein: FRAGMENTS

Hear the first two concerts of *FRAGMENTS*, Alisa Weilerstein's six-part series featuring 27 new commissions written in response to Bach's Cello Suites, where lighting, costume and scenic architecture meld with music in a multisensory experience. Book *FRAGMENTS* as standalone concerts, or together for the full experience.

Wonder

FRAGMENTS begins with a performance of new solo cello works by Allison Loggins-Hull, Chen Yi, Gili Schwarzman, Joan Tower and Reinaldo Moya, intertwined with Bach's First Cello Suite.

Purcell Room at Queen Elizabeth Hall, 3pm
Tickets from £37*

Tumult

Weilerstein performs new commissions by Alan Fletcher, Ana Sokolović, Caroline Shaw, Daniel Kidane and Gity Razaz, mixed with Bach's Cello Suite No.2.

Purcell Room at Queen Elizabeth Hall, 6pm
Tickets from £37*

Saturday 27 September 2025

London Philharmonic Orchestra: Beethoven's Emperor Concerto

Edward Gardner *conductor*
Yefim Bronfman *piano*

George Benjamin Ringed by the Flat Horizon; **Beethoven** Piano Concerto No.5; **Tchaikovsky** Symphony No.5

Royal Festival Hall, 7.30pm
Tickets from £16*

Saturday 27 September 2025

Double Bill

Sean Shibe, 12 Ensemble & GBSR Duo



Guitarist Sean Shibe is joined by 12 Ensemble and the GBSR Duo for a performance of Oliver Leith's *Doom and the Dooms*, which imagines a fictional band performing their greatest hits.

Queen Elizabeth Hall, 8pm

After Dark: Sean Shibe – Electric Counterpoint

The acclaimed guitarist performs music that overwhelms and music to sanctify, including works by Julia Wolfe and Steve Reich, ending with Meredith Monk's reflective *Nightfall*.

Queen Elizabeth Hall Foyer, 9.15pm
Tickets from £17* for entry to both events;
tickets from £12* for entry to *After Dark* only

Sunday 28 September 2025

Aurora Orchestra: Meet the Instruments



Put on your party clothes for this fun, participatory concert! Aurora Orchestra and presenter Lucy Drever introduce the whole family to the world of orchestral music, with original songs by Iain Farrington and Kate Wakeling. Ages 4 – 8.

Queen Elizabeth Hall, 2pm
Tickets from £18 (adults) £14.80* (children)

Chineke! Junior Orchestra

Dukas Fanfare from *La Péri*; A Coleridge-Taylor Sussex Landscape; Mussorgsky Pictures at an Exhibition arr. Ravel

Royal Festival Hall, 2.30pm
Tickets from £12*

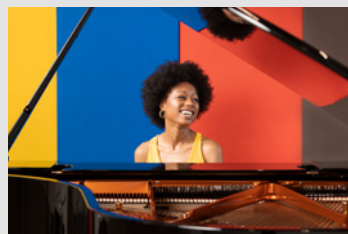
Boris Giltburg Plays Rachmaninov's Preludes

Boris Giltburg *piano*

Rachmaninov Prelude in C sharp minor, Op.3 No.2; 10 Preludes, Op.23; 13 Preludes, Op.32

Queen Elizabeth Hall, 7.30pm
Tickets from £17*

Chineke! Orchestra: Beethoven's Triple Concerto



Roderick Cox *conductor*
Tai Murray *violin*
Sheku Kanneh-Mason *cello*
Isata Kanneh-Mason *piano*

Coleridge-Taylor Ballade in A minor, Op.33; **Beethoven** Triple Concerto for violin, cello & piano; **Errollyn Wallen** New work (London premiere); **Dawson** Negro Folk Symphony

Royal Festival Hall, 7.45pm
Tickets from £11*

Friday 3 October 2025

London Philharmonic Orchestra: Mahler's Fourth

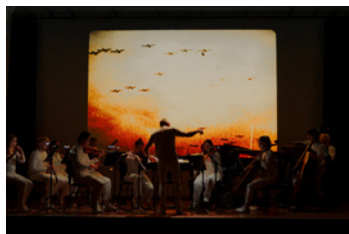
Edward Gardner *conductor*
Jennifer France *soprano*

Hans Abrahamsen *Let me tell you;*
Mahler Symphony No.4

Royal Festival Hall, 7.30pm
Tickets from £16*

Saturday 4 October 2025

Paraorchestra: Dance Like Nobody's Watching



Travel back to Vienna, 1918, as conductor Charles Hazlewood and Paraorchestra conjure Schoenberg's radical musical underworld. Featuring mezzo-soprano Bethan Langford, visuals by John Minton and music including Strauss waltzes arranged by Berg, Webern and Schoenberg.

Queen Elizabeth Hall, 7pm
Tickets from £17*

Sunday 5 October 2025

Philharmonia Debates... Music & Identity

Music is part of what makes us human. Does this mean that who we are, and how society perceives us, inevitably becomes part of our music? Throughout the Philharmonia's 80th birthday season, they explore some big questions around music and identity – come and have your say.

Royal Festival Hall, 5.15pm
Free, but ticketed

Philharmonia Orchestra: Gilbert & George – Sex, Money, Race, Religion

To coincide with Gilbert & George's Hayward Gallery exhibition *21st CENTURY PICTURES*, the Philharmonia Orchestra performs music exploring themes addressed by the artists, as their pictures are projected on a vast screen. Gilbert & George are on record saying that they never listen to music – can the orchestra change their minds and prove it's not the enemy?

Royal Festival Hall, 7pm
Tickets from £12*

London Sinfonietta: Boulez – Sonic Structures

The London Sinfonietta celebrates Boulez and his meticulous approach to composition through performances of *Mémoriale*, the masterwork ... *explosante-fixe* ... and an in-concert deconstruction of his music by conductor and composer George Benjamin. Featuring flautist Michael Cox and the Royal Academy of Music Manson Ensemble.

Queen Elizabeth Hall, 7.30pm
Tickets from £17*

Thursday 9 October 2025

Belfast Ensemble: Dublin Jack

The Belfast Ensemble gives a concert performance of Southbank Centre Associate Artist Conor Mitchell's darkly comic queer opera *Dublin Jack*, ahead of its fully staged debut in 2026. Also hear Mitchell discuss his creative process and the opera's inspiration – Irish sex worker Jack Saul, who found himself involved in a political scandal in 1880s Dublin.

Purcell Room at Queen Elizabeth Hall, 6pm
Tickets from £22*

Stephen Hough & Viano Quartet

The Viano Quartet joins much-loved pianist Stephen Hough for the UK premiere performance of his dramatic Piano Quintet *Les noces rouges* (The Red Wedding), inspired by an episode in Willa Cather's *My Ántonia*. The concert opens with Mozart's String Quartet in B flat, K.458 and concludes with Dvořák's folk-inspired Piano Quintet No.2.

Queen Elizabeth Hall, 7.30pm
Tickets from £17*

Sunday 12 October 2025

Michael Barenboim: Boulez & Electronics



Michael Barenboim *violin, viola*
Gilbert Nuono *live electronics*

Boulez *Anthèmes 1* for violin;
Benjamin Attahir Retour à Tipasa for violin & electronics; Philippe Manoury *Partita II* for violin & electronics; Layale Chaker *Before bloom* for solo viola; Kareem Roustom *Pavane* (pour les enfants défunes) for viola & live electronics (UK premiere); Boulez *Anthèmes 2* for violin & live electronics

Purcell Room at Queen Elizabeth Hall, 3pm
Tickets from £32*

Orchestra of the Age of Enlightenment: Solomon

The OAE's 40th anniversary season begins with *Solomon*, Handel's tour-de-force oratorio. John Butt conducts, with two women in the lead roles – mezzo-soprano Helen Charlston as Solomon and soprano Nardus Williams as his queen – just as it was in 1749. Also with tenor Hugo Hymas, bass-baritone Florian Störtz and the Choir of the Age of Enlightenment.

Queen Elizabeth Hall, 7pm
Tickets from £17*

Wednesday 22 October 2025

London Philharmonic Orchestra: The Rite of Spring

Karina Canellakis *conductor*
Véronique Gens *soprano*
Andrew Staples *tenor*
Jean-Sébastien Bou *baritone*

Stravinsky *Funeral Song*, Op.5;
L Boulanger *Faust et Hélène* – cantata; Stravinsky *The Rite of Spring*

Royal Festival Hall, 6.30pm
Tickets from £16*

*Booking fees apply online (£3.50) and over the phone (£4). There are no booking fees for in-person bookings, Southbank Centre Members, Supporters Circles and Patrons.

Thursday 23 October 2025

**The Multi-Story Orchestra:
Stuck**

Devised by the young musicians of The Multi-Story Orchestra, *Stuck* tells a deeply personal and politically charged story about community, nostalgia and the fight to hold on to the people and places that shape us.

Queen Elizabeth Hall, 7pm
Tickets from £12*

Friday 24 October 2025

**Benjamin Grosvenor:
Pictures at an Exhibition**

Benjamin Grosvenor *piano*

Chopin Piano Sonata No.2 in B flat minor, Op.35 (Marche funèbre); Ravel Gaspard de la nuit; Mussorgsky Pictures at an Exhibition

Queen Elizabeth Hall, 7pm
Tickets from £17*

Saturday 25 October 2025

**London Philharmonic
Orchestra: Rachmaninov's
Second Symphony**



Karina Canellakis *conductor*
Paul Lewis *piano*

Mozart Overture, Idomeneo, re di Creta; Masonic Funeral Music in C minor, K.477; Piano Concerto No.25, K.503; Rachmaninov Symphony No.2

Royal Festival Hall, 7.30pm
Tickets from £16*

Wednesday 29 October 2025

**London Philharmonic
Orchestra: New World
Symphony**

Kahchun Wong *conductor*
Himari *violin*

Chinary Ung Overture, Water Rings; Sibelius Violin Concerto; Dvořák Symphony No.9 (New World)

Royal Festival Hall, 7.30pm
Tickets from £16*

Explore our whole programme

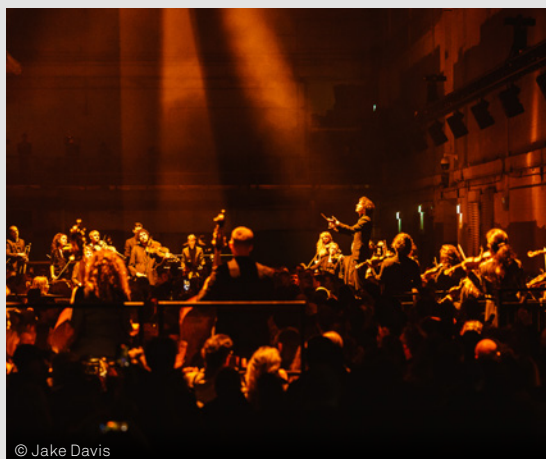
The more you book,
the more you save.

With our multi-buy
offer, you can book
concerts from across
Classical Music:
Autumn/Winter 2025/26
and receive a discount.

See back cover
for details.

RESIDENT ORCHESTRAS

The Southbank Centre is proud to have a family of six Resident Orchestras. Each is singular; all are dedicated to exceptional musicianship and thrilling live performance. Together, we celebrate orchestral music's great traditions and support its continued innovation in the 21st century.



Aurora Orchestra

In the 20 years since it was founded, Aurora Orchestra has become known for its pioneering approach to orchestral performance, initially by playing major works entirely from memory, led by Principal Conductor Nicholas Collon. More recently, Aurora has undertaken dramatic cross-arts explorations of music, devised by Creative Director Jane Mitchell. It also works to bring music to families, schools and SEND settings, including its free innovative online learning platform, Aurora Classroom.



Chineke! Orchestra

Founded in 2015 by Chi-chi Nwanoku CBE, the Chineke! Orchestra is Europe's first majority Black and ethnically diverse orchestra. Performing classical works alongside music by Black and ethnically diverse composers, the ensemble made its debut at the Southbank Centre and became a Resident Orchestra in 2022. On Saturday 28 September, they're back where it all started, joined by cellist Sheku Kanneh-Mason for a performance in celebration of their triumphant first decade.

To see all of our classical music events, including those from our Resident Orchestras, scan the QR code or visit our website.
southbankcentre.co.uk/classicalmusic





London Philharmonic Orchestra

The London Philharmonic Orchestra has been creating thrilling orchestral experiences at the Southbank Centre since the Royal Festival Hall's opening concert 75 years ago. This autumn, alongside beloved blockbusters like Tchaikovsky's Fifth Symphony, Stravinsky's *The Rite of Spring* and Elgar's *Enigma Variations*, the Orchestra presents *Harmony with Nature*, a season of music that celebrates the beauty of our planet, and humanity's place in protecting it.



London Sinfonietta

The London Sinfonietta is one of the world's leading contemporary music ensembles. Formed in 1968, it has commissioned over 470 works. Its musicians reimagine the contemporary repertoire they champion, and work with inspiring living composers and artists to create new work. They collaborate with young people, communities and the public in making projects involving film, theatre, dance and art, and their free-to-view digital channel reaches audiences around the world.



Orchestra of the Age of Enlightenment

The OAE's 40th-season celebrations get under way in October with Handel's rousing oratorio *Solomon*, honouring a 275-year-old tradition of casting a woman in the title role. But what else would we expect from the orchestra set up by musicians intent on chucking out the orchestra rule book? The OAE is instead guided by the seemingly paradoxical goals of pursuing authentic performances while continuing to experiment. They're back in November with an all-Haydn programme starring Sir András Schiff.



Philharmonia Orchestra

The Philharmonia Orchestra gave its first ever performance in October 1945 – happy 80th birthday! For eight decades, the Philharmonia has performed with leading conductors and soloists, made definitive recordings, created innovative projects, and embraced new technology to enable more people to experience music-making of the highest quality, and this season is no exception. Throughout, the orchestra explores how music shapes our identity – look out for the *Philharmonia Debates...* series and join the conversation.

Friday 31 October 2025

London Philharmonic Orchestra: A Sea Symphony



Mark Elder *conductor*
Masabane Cecilia Rangwanasha *soprano*
David Stout *baritone*
London Philharmonic Choir

Sibelius Scènes historiques, Suite No.2, Op.66; The Oceanides, Op.73;
Vaughan Williams Symphony No.1 (A Sea Symphony)

Royal Festival Hall, 7.30pm
Tickets from £16*

Sunday 2 November 2025

Philharmonia Debates... Music & Politics

Can artists separate their own political views from their work, and should they? Does knowing a composer's or performer's political stance and relationship with power affect how we listen to their music? Come and join the debate, ahead of a concert of politically charged works from the Philharmonia.

Level 5 Function Room, Green Side,
Royal Festival Hall, 1.15pm
Free, but ticketed

Philharmonia Orchestra: Santtu Conducts Sibelius, Lindberg & Shostakovich

Santtu-Matias Rouvali *conductor*
Christian Lindberg *trombone*

Sibelius Finlandia; **Christian Lindberg** Trombone Concerto (Golden Eagle); **Shostakovich** Symphony No.5

Royal Festival Hall, 3pm
Tickets from £12*

Wednesday 5 November 2025

London Philharmonic Orchestra: Brahms' Fourth

Edward Gardner *conductor*
Pavel Kolesnikov *piano*

Brahms Tragic Overture;
Tchaikovsky Piano Concerto No.1;
Brahms Symphony No.4

Royal Festival Hall, 7.30pm
Tickets from £16*

Thursday 6 November 2025

Philharmonia Orchestra: Wagner, Strauss & Tchaikovsky – Last Songs

Lorenzo Viotti *conductor*
Masabane Cecilia Rangwanasha *soprano*

Wagner Prelude & Liebestod from Tristan und Isolde; **Strauss** Four Last Songs; **Tchaikovsky** Symphony No.6 (Pathétique)

Royal Festival Hall, 7.30pm
Tickets from £17*

Saturday 8 November 2025

Glyndebourne x Turnage: The Railway Children

Mark-Anthony Turnage *The Railway Children* – opera

Queen Elizabeth Hall, 6.30pm
Tickets from £27*

London Philharmonic Orchestra: Beethoven & John Adams



Edward Gardner *conductor*
James Ehnes *violin*
London Philharmonic Choir
BBC Symphony Chorus

Beethoven Violin Concerto;
John Adams Harmonium for chorus & orchestra

Royal Festival Hall, 7.30pm
Tickets from £16*

Sunday 9 November 2025

Philharmonia Orchestra: Paavo Järvi Conducts Bruch and Sibelius



Paavo Järvi *conductor*
Alena Baeva *violin*

Brahms Variations on a theme by Haydn (St Anthony); **Bruch** Violin Concerto No.1; **Sibelius** Symphony No.5

Royal Festival Hall, 3pm
Tickets from £17*

Tiffany Poon: Alkan, Debussy & Ravel



Pianist Tiffany Poon is back with a programme of French music. It features Alkan's virtuosic *Le festin d'Ésope*, Debussy's *Arabesques* and Ravel's tremulous seascape *Une barque sur l'océan*.

Queen Elizabeth Hall, 3pm
Tickets from £17*

Manchester Collective: Lights and Places

Expect a high-energy, light-infused celebration of contemporary music, including Mathis Saunier's rave-inspired *HYPER MEMORIA*, works by Jocelyn Campbell, Alex Groves, Errollyn Wallen and Anna Meredith – and a world premiere.

Purcell Room at Queen Elizabeth Hall, 6pm
Tickets from £27*

*Booking fees apply online (£3.50) and over the phone (£4). There are no booking fees for in-person bookings, Southbank Centre Members, Supporters Circles and Patrons.

Wednesday 12 November 2025

London Philharmonic Orchestra: Romeo and Juliet



Elim Chan *conductor*
Nicolas Altstaedt *cello*

Gabriela Lena Frank Contested Eden (UK premiere); **Walton** Cello Concerto; **Prokofiev** Selections from *Romeo and Juliet*, Op.64

Royal Festival Hall, 7.30pm
Tickets from £16*

Thursday 13 November 2025

Philharmonia Orchestra: Jakub Hrůša Conducts Mahler 7

Jakub Hrůša *conductor*

Mahler Symphony No.7

Royal Festival Hall, 7.30pm
Tickets from £17*

Monday 17 November 2025

Philharmonia Orchestra: Evgeny Kissin – One Concert, Three Concertos



Lawrence Foster *conductor*
Evgeny Kissin *piano*

Rimsky-Korsakov Piano Concerto; **Prokofiev** Piano Concerto No.1; **Rachmaninov** The Rock; **Scriabin** Piano Concerto

Royal Festival Hall, 7.30pm
Tickets from £32*

Thursday 20 November 2025

Philharmonia Debates... Music & Gender

Orchestras including the Philharmonia have made great progress in the journey towards gender equity. But more is needed – how can we make that happen? Does a person's gender affect how they compose or perform, and how we interpret their music? Have your say ahead of the Philharmonia's performance of Laura Karpman's opera *Balls* with conductor Marin Alsop.

Level 5 Function Room, Green Side, Royal Festival Hall, 6pm
Free, but ticketed

Philharmonia Orchestra: Balls – Marin Alsop Conducts Laura Karpman

Marin Alsop conducts Laura Karpman's one-act opera *Balls*, inspired by the infamous Battle of the Sexes tennis match, with mezzo-soprano Nikola Printz playing Billie Jean King and tenor Toby Spence as Bobby Riggs. Before that, Sandi Toksvig reads poems by Edith Sitwell in a performance of Walton's *Façade*.

Royal Festival Hall, 7.30pm
Tickets from £12*

London Sinfonietta & Marius Neset



Hear the world premiere of saxophonist Marius Neset's new work *Changes*, in which fearsome compositions and horn improvisation merge with London Sinfonietta's precision playing. Also on the bill is another world premiere, Ashkan Layegh's Persian-inspired *Ephemerality and Recurrence*. With the Pheмо Quartet and drummer Anton Eger.

Queen Elizabeth Hall, 7.30pm
Tickets from £17*

Wednesday 26 November 2025

OrchLab Festival Day

OrchLab Festival Day is for disabled adults and those who support them. Must be booked in advance. Ages 18+

The Clore Ballroom, Level 2, Royal Festival Hall, 11am
Free, but ticketed

London Philharmonic Orchestra: Edward Gardner Conducts Elgar

Edward Gardner *conductor*
Beth Taylor *mezzo-soprano*

Elgar Overture, In the South (Alassio); Sea Pictures; Sospiri; Enigma Variations

Royal Festival Hall, 7.30pm
Tickets from £16*

Thursday 27 November 2025

Philharmonia Chamber Players: A Portuguese Quartet

Performers include:
Nuno Carapina *violin*
Eunsley Park *violin*
Daichi Yoshimura *viola*
Alexander Rolton *cello*

Programme includes:
Freitas Branco String Quartet

Royal Festival Hall, 6pm
Free, but ticketed

Orchestra of the Age of Enlightenment: Haydn – From Esterhaza to Hanover Square

Sir András Schiff *director*,
fortepiano

Haydn Symphony No.39; Sinfonia concertante in B flat for violin, cello, oboe & bassoon, Hob.I/105; Keyboard Concerto in D, Hob.XVIII/11; Symphony No.102

Queen Elizabeth Hall, 7pm
Tickets from £17*

Philharmonia Orchestra: Rafael Payare Conducts Berlioz & Ortiz

Rafael Payare *conductor*
Pacho Flores *trumpet*

Berlioz Overture, Le carnaval romain; **Gabriela Ortiz** Trumpet Concerto (Altar de Bronce) (London premiere); **Berlioz** Symphonie fantastique

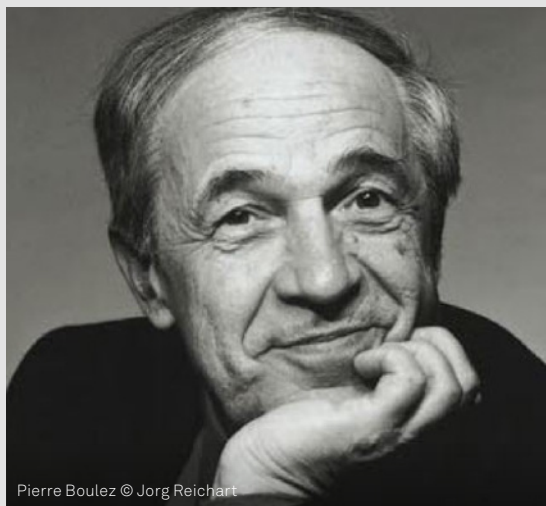
Royal Festival Hall, 7.30pm
Tickets from £12*

CONTEMPORARY EDIT

Featuring our three Resident Artists, our *Contemporary Edit* showcases boundary-pushing artists from throughout the 20th century and to the present day. Whether delving into unexplored historical tales, championing pioneering composers or telling contemporary stories, these events open new windows into the power of classical music.



Paraorchestra © Paraorchestra



Pierre Boulez © Jorg Reichart



Conor Mitchell © Belfast Ensemble. Photo: Neil Harrison

Our *Contemporary Edit* begins with events from our three Resident Artists. Manchester Collective presents the transcendent *Shaker Loops*, later returning with *Lights and Places*, a kaleidoscope of sounds. Cellist Alisa Weilerstein performs two instalments of *FRAGMENTS*, her commissioning project around Bach's Cello Suites. And guitarist Sean Shibe joins forces with GBSR Duo and 12 Ensemble in *Doom and the Dooms*, Oliver Leith's new work depicting a fictional band.

Paying tribute to the pioneering Boulez in his centenary year, Resident Orchestra London Sinfonietta presents works including *...explosante-fixe...* and returns with a rare opportunity to experience Grisey's profound meditation on death. Michael Barenboim also marks Boulez' centenary in an evening of violin, viola and live electronics with Gilbert Nuono.

The Attacca Quartet joins us for the *Opening Weekend* with works from composers ancient and modern, while the BBC Concert Orchestra performs music from beloved period dramas in a live edition of BBC Radio 3's *Friday Night Is Music Night*.

The theme of sharing stories is woven throughout. Paraorchestra transports us to Schoenberg's utopian musical society in Vienna, 1918. ZRI reimagines Schubert's String Quintet in C to reflect its folk influences. Southbank Centre Associate Artist Conor Mitchell and the Belfast Ensemble perform the UK debut of the concert version of radical queer opera *Dublin Jack*. The Multi-Story Orchestra presents *Stuck*, a bold new musical that explores home and community.

Sean Shibe returns in the new year with a curated journey, guiding us through three spaces to experience forgotten works for lute and acoustic and electric guitar. Finally, a dispute between giants of electronic music Stockhausen and Aphex Twin inspires GBSR Duo's double bill.

Attacca Quartet: Dowland, Glass & Pärt

See Thu 25 Sep

Manchester Collective: Shaker Loops

See Fri 26 Sep

BBC Chamber Orchestra: Friday Night Is Music Night – Bridgerton and Beyond

See Fri 26 Sep

Alisa Weilerstein: FRAGMENTS – Wonder Alisa Weilerstein: FRAGMENTS – Tumult

See Sat 27 Sep

Sean Shibe, 12 Ensemble & GBSR Duo (Double Bill)

See Sat 27 Sep

Paraorchestra: Dance Like Nobody's Watching

See Sat 4 Oct

London Sinfonietta: Boulez – Sonic Structures

See Sun 5 Oct

Belfast Ensemble: Dublin Jack

See Thu 9 Oct

Michael Barenboim: Boulez & Electronics

See Sun 12 Oct

The Multi-Story Orchestra: Stuck

See Thu 23 Oct

Manchester Collective: Lights and Places

See Sun 9 Nov

London Sinfonietta: Grisey – Quatre Chants

See Fri 28 Nov

Sean Shibe: Forgotten Dances – Lute & Guitars

See Sat 10 Jan

GBSR Duo: Stockhausen vs Aphex Twin (Double Bill)

See Sat 31 Jan



KEYBOARD MUSIC

The enduring popularity of the keyboard throughout the history of classical music is a reflection of its versatility, range and expressive power. We hear from some of the greatest exponents of piano, harpsichord and organ, delving into keyboard music's storied past and exploring its experimental possibilities.



There's a rare chance to hear Rachmaninov's complete Preludes, performed by Boris Giltburg, a pianist who has made them his own in recent years. Pianist Benjamin Grosvenor showcases his remarkable artistry in Mussorgsky's monumental *Pictures at an Exhibition*.

Rising piano star Tiffany Poon returns after her sell-out London debut here in 2024 with a selection of works from French composers. Harpsichordist Mahan Esfahani also pays us a return visit, this time conjuring the Elizabethan era.

On the Queen Elizabeth Hall organ, Claire M Singer, known for her experimental approach, celebrates her new album with the London Contemporary Orchestra. Daniel Hyde joins us on the Royal Festival Hall organ with firm favourites alongside the world premiere of a newly commissioned work by Errollyn Wallen.

Closing *Keyboard Music* for Autumn/Winter, pianist Alexandra Dariescu reflects on her journey in the music world, presenting a personal programme ending with Chopin's 24 Preludes.

Boris Giltburg Plays Rachmaninov's Preludes

See Sun 28 Sep

Benjamin Grosvenor: Pictures at an Exhibition

See Fri 24 Oct

Tiffany Poon: Alkan, Debussy & Ravel

See Sun 9 Nov

Mahan Esfahani: Byrd, Dowland & Gibbons

See Wed 3 Dec

Claire M Singer x LCO: Quiet Glen

See Sun 7 Dec

Daniel Hyde: Bach, Mozart & Debussy

See Tue 27 Jan

Alexandra Dariescu

See Thu 29 Jan

ARTIST RESIDENCIES

A place where new ideas are born and new work flourishes, our *Artist Residencies* support forward-thinking artists and music-makers. For 2025/26, we welcome two new artists – guitarist Sean Shibe and cello superstar Alisa Weilerstein – as well as the return of our long-standing collaborators Manchester Collective.



Alisa Weilerstein

The cellist extraordinaire begins her residency during the *Opening Weekend*, performing the first two instalments of *FRAGMENTS*, her ambitious six-part project. Each *FRAGMENT* sees Weilerstein perform one of Bach's Solo Cello Suites interwoven with newly commissioned music. This project is curated by Weilerstein and underscored with bespoke lighting, scenic architecture and costume design from a team of creatives. *FRAGMENTS* three and four follow in Spring/Summer 2026.

Also, in Autumn/Winter 2025/26, Weilerstein is joined by violinist Stefan Jackiw and pianist Inon Barnatan for a programme of piano trios by Rachmaninov, Ravel and Beethoven.

Alisa Weilerstein: FRAGMENTS – Wonder **Alisa Weilerstein: FRAGMENTS – Tumult**

See Sat 27 Sep

Alisa Weilerstein & Friends

See Sun 30 Nov



Sean Shibe

The talented guitarist launches his residency with a double bill during our *Opening Weekend*, where he's joined by 12 Ensemble and GBSR Duo to perform *Doom and the Dooms*, a work written for them by Oliver Leith. Part two of the double-bill evening sees Shibe showcase the full range of his instrument in a late-night programme fuelled by the electric guitar and electronics, including his own arrangement of Julia Wolfe's *LAD* and Steve Reich's *Electric Counterpoint*.

Shibe returns in January for a performance in which he plays lute, classical guitar and electric guitar in various spaces across the Queen Elizabeth Hall building. It also features *Forgotten Dances* by Thomas Adès.

Sean Shibe, 12 Ensemble & GBSR Duo (Double Bill) After Dark: Sean Shibe – Electric Counterpoint

See Sat 27 Sep

Sean Shibe: Forgotten Dances – Lute & Guitars

See Sat 10 Jan

Manchester Collective

Led by Co-Artistic Directors Rakhi Singh and Jasmin Kent Rodgman, Manchester Collective are a shape-shifting ensemble that performs a combination of cutting-edge contemporary music, classical masterpieces and staged works. For this instalment of their residency, they perform John Adams' *Shaker Loops* during our *Opening Weekend*, as part of an eclectic programme of music and spoken word.

Their second appearance, *Lights and Places*, is a programme for strings, flute, electric guitar and live electronics. Also on the bill is music by Alex Groves, Anna Meredith, Mathis Saunier and Errollyn Wallen.

Manchester Collective: Shaker Loops

See Fri 26 Sep

Manchester Collective: Lights and Places

See Sun 9 Nov



© Mike Skelton



Friday 28 November 2025

London Sinfonietta: Grisey – *Quatre Chants*

Experience the hauntingly disorienting *Quatre chants pour franchir le seuil*, by Gérard Grisey. This monumental masterpiece, premiered in 1999 by London Sinfonietta and George Benjamin, explores the boundary between life and death – a significance elevated by the composer's passing soon after completion. With soprano Nina Guo.

Queen Elizabeth Hall, 7.30pm
Tickets from £17*

Saturday 29 November 2025

Chineke! Orchestra Celebrates a Decade: Part 2

Kalena Bovell *conductor*

Nneka Cummins New work (World premiere); **Ayanna Witter-Johnson** *Blush*; **Cassie Kinoshi** *Handpan Concerto* (to the hibiscus); **Hannah Kendall** *The spark catchers*; **Stewart Goodyear** *Life, Life, Life*; **James B Wilson** *Remnants*

Queen Elizabeth Hall, 7.30pm
Tickets from £17*

London Philharmonic Orchestra: Sheku Kanneh- Mason Plays Bloch



Edward Gardner *conductor*
Sheku Kanneh-Mason *cello*

Robert Laidlow *Exoplanets* (World premiere); **Bloch** *Schelomo* – Hebraic rhapsody for cello & orchestra; **Rachmaninov** *Symphony No.3*

Royal Festival Hall, 7.30pm
Tickets from £16*

Sunday 30 November 2025

Philharmonia Orchestra: Vidya Patel – Artist in Residence

Dance artist and choreographer Vidya Patel gives a performance devised with composer/musician Shammi Pithia, designer Shankho Chaudhuri and an ensemble of Philharmonia players.

The Clore Ballroom, Level 2, Royal Festival Hall, 1.30pm
Free

Philharmonia Orchestra: Santtu and Fazil Say



Santtu-Matias Rouvali *conductor*
Fazil Say *piano*

Falla *El amor brujo* – suite arr. for orchestra; **Fazil Say** *Piano Concerto* (Mother Earth) (UK premiere); **Dvořák** *Symphony No.8*

Royal Festival Hall, 3pm
Tickets from £17*

Alisa Weilerstein & Friends

Stefan Jackiw *violin*
Alisa Weilerstein *cello*
Inon Barnatan *piano*

Rachmaninov *Trio élégiaque No.1* in G minor; **Ravel** *Piano Trio* in A minor; **Beethoven** *Piano Trio* in B flat, Op.97 (Archduke)

Queen Elizabeth Hall, 6pm
Tickets from £17*

Wednesday 3 December 2025

Mahan Esfahani: Byrd, Dowland & Gibbons

Virtuoso harpsichordist Mahan Esfahani performs English Renaissance and Baroque music. The programme includes Dowland's 'Can She Excuse My Wrongs?' and Gibbons' 'The Hunt's Up', ending with Byrd's dazzling showpiece 'Ut, re, mi, fa, sol, la'.

Queen Elizabeth Hall, 7pm
Tickets from £17*

Friday 5 December 2025

Double Bill

Red Hedgehog Tavern

Zum Rotten Igel (ZRI)
Max Baillie *violin*
Matthew Sharp *cello*
Ben Harlan *clarinet*
Jon Banks *accordion*
Iris Pissaride *santour*

Schubert *String Quintet* in C, D.956 rescored to include clarinet, santour & accordion and interleaved with traditional tunes

Purcell Room at Queen Elizabeth Hall, 9pm

After Dark: ZRI – Cellar Sessions

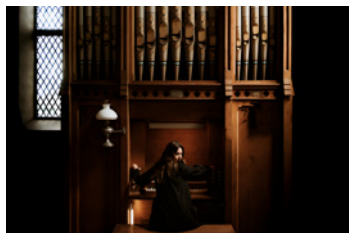


ZRI's Cellar Sessions conjure up late-night energy inspired by the Bohemian atmosphere of Vienna's Red Hedgehog Tavern – once a haunt of Brahms. Prepare to dance as the band presents a programme with a wild mix of moods and music ranging from Bach to Donna Summer.

Queen Elizabeth Hall Foyer, 10.30pm
Tickets from £22* for entry to both events;
tickets from £12* for entry to *After Dark* only

Sunday 7 December 2025

Claire M Singer x LCO: Quiet Glen



Composer and performer Claire M Singer, known for her experimental approach to the organ, celebrates her new album *gleann ciùin* at this concert with the London Contemporary Orchestra. Hear music inspired by the dramatic landscapes of Singer's native Scotland, filled with rich harmonic textures and complex overtones.

Queen Elizabeth Hall, 7pm
Tickets from £17*

Saturday 10 January 2026

Sean Shibe: Forgotten Dances – Lute & Guitars

In a recital that leads us through three venues, Sean Shibe begins by playing lute music by Renaissance composers Attaignant and Ballard, and from the Rowallan and Straloch manuscripts. He then switches to classical guitar for a Bach suite, Martin's *Quatre Pièces Brèves* and Thomas Adès' 2023 work *Forgotten Dances*, ending with a world premiere for electric guitar.

Across the Queen Elizabeth Hall site, 8pm
Tickets from £27*

Saturday 17 January 2026

LPO FUNharmonics: Peter and the Wolf

Meet a boy, a bird, a duck, a cat ... and a wolf! The London Philharmonic Orchestra retells Prokofiev's classic tale in an interactive family concert presented by Rachel Leach and conducted by Michael Seal. Ages 6+.

Royal Festival Hall, 12 noon
Tickets from £18 (adults) and £10* (children)

Royal Festival Hall foyers, from 10am: ticket holders to the performance can take part in fun pre-concert activities around the building.

London Philharmonic Orchestra: The Firebird

Maxim Emelyanychev *conductor*
Gustavo Díaz-Jerez *piano*

Rimsky-Korsakov Russian Easter Festival Overture; **Gustavo Díaz-Jerez** Concerto for piano & orchestra (Tajogaite) (UK premiere); **Stravinsky** The Firebird, Suite (1945)

Royal Festival Hall, 6.30pm
Tickets from £16*

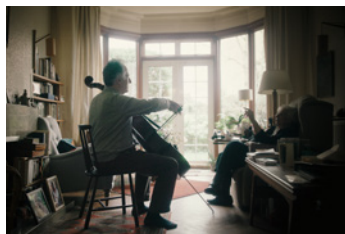
Sunday 18 January 2026

OAE Tots

Bring your clapping hands and stamping feet to enjoy the rhythms and melodies of Baroque music in this interactive concert, where you get to sit up close to musicians from the Orchestra of the Age of Enlightenment. For ages 2 – 5.

Royal Festival Hall, 10.30am & 12 noon
Tickets from £15 (adults) and £7* (children)

Raphael Wallfisch: Composers in Exile

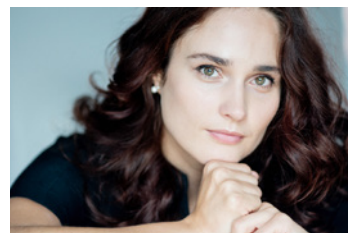


Cellist Raphael Wallfisch is joined by pianist Simon Callaghan for an afternoon of music by composers displaced by the Second World War. The concert features Bartók's Rhapsody No.1 and cello sonatas by Weinberg, Bosmans and Laks, ending with Martinů's Cello Sonata No.2.

Purcell Room at Queen Elizabeth Hall, 3pm
Tickets from £27*

Wednesday 21 January 2026

London Philharmonic Orchestra: Rhapsody on a Theme of Paganini



Vladimir Jurowski *conductor*
Anna Vinnitskaya *piano*

Anna Korsun Terricone; **Rachmaninov** Rhapsody on a theme of Paganini; **Mosolov** Zavod (The Iron Foundry), Op.19; **Prokofiev** Symphony No.2 in D minor

Royal Festival Hall, 7.30pm
Tickets from £16*

Saturday 24 January 2026

London Philharmonic Orchestra: Mahler's Tenth



Vladimir Jurowski *conductor*
Mahler Symphony No.10 (compl. Barshai)

Royal Festival Hall, 7.30pm
Tickets from £16*

Tuesday 27 January 2026

Daniel Hyde: Bach, Mozart & Debussy

Daniel Hyde *organ*

Bach Prelude and Fugue in C, BWV.547; **Mozart** Fantasia in F minor, K.608; **Debussy** Petite Suite; **Errollyn Wallen** New work for organ (World premiere); **Alain** 3 Danses; **Duruflé** Prelude, adagio et choral varié sur le thème du Veni Creator, Op.4

Royal Festival Hall, 7pm
Tickets from £22*

Thursday 29 January 2026

Alexandra Dariescu



Pianist Alexandra Dariescu opens her recital with 15 brief masterpieces spanning centuries and cultures, including music by Clara Schumann, Florence Price and George Enescu. The second half is devoted to what is perhaps the ultimate set of miniatures: Chopin's Preludes, Op.28.

Queen Elizabeth Hall, 7pm
Tickets from £17*

Crouch End Festival Chorus & Hertfordshire Chorus: Elgar – The Kingdom



London Orchestra da Camera
David Temple *conductor*
Francesca Chiejina *soprano*
Dame Sarah Connolly *mezzo-soprano*
Benjamin Hulett *tenor*
Ashley Riches *bass*

Elgar The Kingdom

Royal Festival Hall, 7.30pm
Tickets from £12*

Friday 30 January 2026

Chineke! Orchestra: An American in Paris



Harish Shankar *conductor*
Jasdeep Singh Degun *sitar*

Jenkins Rhapsody No.1 (Charlestonia); Jasdeep Singh Degun Concerto for sitar & orchestra (Arya) (London premiere); Lament arr. Ian Burdge for sitar & string ensemble; Kodály Dances of Galánta; Gershwin An American in Paris

Queen Elizabeth Hall, 7.30pm
Tickets from £17*

Saturday 31 January 2026

Double Bill

GBSR Duo: Stockhausen vs Aphex Twin

GBSR Duo, comprising percussionist George Barton and pianist Siwan Rhys, present a double bill of music by Stockhausen and Aphex Twin, two very different giants of electronic music. It begins with this performance of the former's *Kontakte*, a masterpiece of post-war avant-garde music.

Purcell Room at Queen Elizabeth Hall, 8.30pm

After Dark: GBSR Duo Performs Aphex Twin

The double bill continues in the Foyer as the duo takes on Aphex Twin's *Computer Controlled Instruments pt2*. Originally written 'for robots', tonight it is performed in transcription for live prepared pianos and percussion.

Queen Elizabeth Hall Foyer, 9.30pm
£22* for entry to both events; tickets from £12* for entry to *After Dark* only



CHAMBER MUSIC

Duets, trios, quartets and quintets – in these close collaborations, great artists come together to showcase beloved works for small ensembles, new takes on classics, bold UK premieres and deeply personal programmes.



Attacca Quartet © David Goddard

Joining us from the US, two-time Grammy winners Attacca Quartet bring together ancient and modern music in their Southbank Centre debut. The great pianist Stephen Hough joins forces with another sought-after ensemble from the US, the Viano Quartet, in works including the UK premiere of Hough's quintet *Les noces rouges*.

One of our Resident Artists for 2025/26, cellist Alisa Weilerstein, is joined by Stefan Jackiw and Inon Barnatan for highlights of the trio repertoire.

ZRI, known for their unconventional interpretations of chamber works, turn their attention to Schubert's String Quintet in C, teasing out the folk influences of this much-loved work.

Cellist Raphael Wallfisch, whose mother is the Holocaust survivor and cellist Anita Lasker-Wallfisch, honours composers who were persecuted or exiled during the Second World War. The performance, with pianist Simon Callaghan, marks the one-year anniversary of film *The Last Musician of Auschwitz*, which tells Lasker-Wallfisch's story.

Attacca Quartet: Dowland, Glass & Pärt

See Thu 25 Sep

Stephen Hough & Viano Quartet

See Thu 9 Oct

Alisa Weilerstein & Friends

See Sun 30 Nov

ZRI: Schubert at the Red Hedgehog Tavern (Double Bill)

See Fri 5 Dec

Raphael Wallfisch: Composers in Exile

See Sun 18 Jan

ALTERNATIVE EXPERIENCES

Our *Alternative Experiences* shine a light on artists who are taking classical music out of the concert hall to create bold new encounters with the art form. We welcome artists for late-night experiences that take inspiration from lively corners of history and pop culture, and blur the lines between genres.



This Autumn/Winter, many of our *Alternative Experiences* are presented as part of a double bill, in *After Dark* events that follow concerts in our halls.

Following Oliver Leith's *Doom and the Dooms*, Resident Artist Sean Shibe showcases the full range of his instrument in a performance fuelled by the electric guitar and electronics including arrangements of Julia Wolfe's ground-shaking lament *LAD* and Steve Reich's heady *Electric Counterpoint*. Later in the season, Shibe takes audiences on a curated journey around the Queen Elizabeth Hall building in a programme that explores different sound-worlds.

In *Cellar Sessions*, ZRI is inspired by 19th-century Viennese tavern The Red Hedgehog, once a haunt of composers including Brahms and Schubert, where the boundaries between genres blurred as the night went on.

GBSR Duo completes a double bill inspired by a dispute between Stockhausen and Aphex Twin, two giants of electronic music, with Aphex Twin's *Computer Controlled Instruments pt2*.

After Dark: Sean Shibe – Electric Counterpoint (part of Double Bill with Sean Shibe, 12 Ensemble & GBSR Duo)

See Sat 27 Sep

After Dark: ZRI – Cellar Sessions (part of Double Bill with ZRI: Schubert at the Red Hedgehog Tavern)

See Fri 5 Dec

Sean Shibe: Forgotten Dances – Lute & Guitars

See Sat 10 Jan

After Dark: GBSR Duo Performs Aphex Twin (part of Double Bill with GBSR Duo: Stockhausen vs Aphex Twin)

See Sat 31 Jan

FAMILY CLASSICAL CONCERTS

Our Resident Orchestras are passionate about creating thrilling musical experiences for the youngest audiences, so if the children in your life love music or are curious about playing an instrument, there's plenty on offer. We have family-friendly events suitable for kids as young as two – and the best news is, you're going to have a good time too.



Celebrating its 20th anniversary, Aurora Orchestra has a reputation for its brilliant family experiences. Find out why during our *Opening Weekend*, as they invite you to *Meet the Instruments* – an event aimed at children aged 4 to 8 and their families.

January sees an *LPO FUNharmonics* performance of Prokofiev's *Peter and the Wolf* – the piece that has been introducing children to the joys of classical music since 1936. Recommended for ages 6+, this is a special interactive concert hosted by Rachel Leach and conducted by Michael Seal.

We also welcome back the Orchestra of the Age of Enlightenment for another of their popular *OAE Tots* performances, designed for ages 2 to 5, where audiences can get up close to the instruments. Foot stomping, hand clapping and having fun is mandatory!

Aurora Orchestra: Meet the Instruments

See Sun 28 Sep

LPO FUNharmonics: Peter and the Wolf

See Sat 17 Jan

OAE Tots

See Sun 18 Jan

Passionate about classical music?

Play a part in every performance.

Name a seat in your favourite concert hall and help support the future of classical music at the Southbank Centre.

For more information about naming a seat in the Royal Festival Hall, Queen Elizabeth Hall or the Purcell Room, visit southbankcentre.co.uk/nameaseat



SOUTHBANK CENTRE

Love what we do?

Why not support our work and get closer to the art?

You can support us year-round by joining our family of Members and supporters, with different levels of access to our artistic programme. You'll enjoy the first chance to book presale tickets, your own Members' Lounge and never pay booking fees.

Your support will help us to deliver life-changing participation projects and a programme of free events to help open up the arts to all.

Find out more at southbankcentre.co.uk/join



THANK YOU

Your continued and generous support enables us to keep doing what we're doing, bringing millions of people together by opening up the unique art spaces that we care for. In particular, we would like to thank:

Sponsors and Partners

Bloomberg Philanthropies
Edwardian Hotels
HB Reavis
Sea Containers
TCL
Van Cleef & Arpels

Corporate Members

5654 & Company
Almacantar
Bloomberg
Christian Dior Couture
Imperial Health Charity
Mishcon de Reya
Sotheby's

Grantmakers

Art Fund
Arts Council England Lottery Funded
The Baring Foundation
City Bridge Foundation
Cockayne Grants for the Arts
Durjoy Bangladesh Foundation (DBF)
Fluxus Art Projects
Garfield Weston Foundation
The Goethe-Institut London
Henry Moore Foundation
Institut für Auslandsbeziehungen (ifa)
The Italian Cultural Institute in London
The John S Cohen Foundation
The Karlsson Játiva Charitable Foundation
Korea Foundation
Kukje Art and Culture Foundation
Ministry of Culture, Taiwan (R.O.C.)
The Nicholas Berwin Charitable Trust
Philip and Irene Toll Gage Foundation
RC Foundation, Taiwan (R.O.C.)
The Rothschild Foundation
Samsung Foundation of Culture
T.S. Eliot Foundation
VIA Art Fund
Yang Won Sun Foundation

Patrons & Major Donors

Kate & Ajay Agarwal
anonymous art project
Nathalie Aureglia-Caruso
Laura Bailey
Marc & Lynne Benioff
Big Give Foundation
Michael Blank
Tom & Jo Bloxham
BLUM Los Angeles, Tokyo, New York
The Rory and Elizabeth Brooks Foundation
Simon Morris & Annalisa Burello
Max & Monique Burger and the TOY family
Burke Family Foundation
Piers D Butler

Sarah Cannon
Matt & Pia Cohler
Marie-Laure de Clermont-Tonnerre
Lady Alison Deighton
Maryam Eisler
Dr Paul Ettlinger
Bridgitt & Bruce Evans
Nicoletta Fiorucci Foundation
The Form Foundation
Gagosian
Galerie Barbara Wien, Berlin
Galerie Chantel Crousel
Galerie Nathalie Obadia
Gillian Jason Gallery
Glenstone Museum
Lydia & Manfred Gorvy
Alexander Graham
Professor Lynda Gratton & The Hon Sir Nigel Boardman
Lisa Honeyman & Baer Pettit
Pippa Hornby
Mike & Antonia Hussey
Mary & Daniel James
David & Clare Kershaw
Shareen Khattar Harrison
kurimanzutto, Mexico City / New York
Wendy Lee
Lehmann Maupin
David Maclean
Tristin & Martin Mannion, Boston, MA
Marian Goodman Gallery
Liz & Luke Mayhew
Jane & David Metter
Misso Family
Rahul Moodgal
Pace Gallery
Marshall & Véronique Parke
Perrotin
The Roberts Institute of Arts
The Roger and Ingrid Pilkington Charitable Trust
Bianca & Stuart Roden
Corinne & Robert Rooney
Sir Paul & Lady Jill Ruddock CBE
Danielle Ryan
William Sargent & Sandhini Poddar
Eleonor & Francis Shen
David and Jennifer Sieff Charitable Trust
Sprüth Magers
Malek & Maria Sukkar
Thomas Dane Gallery
Tioc Foundation
Lara Veroner Gubitosi
Catherine Walsh
George Wells
White Cube
Yancey Richardson Gallery
Jenny Yeh, Winsing Arts Foundation
Anna & Michael Zaoui
David Zwirner Gallery

Artistic Director's Circle

Roger & Alison Heath
Dr Christopher & The Lady Juliet Tadgell
David Zwirner Gallery

Directors' Circle

Brian Abel
The Hon. David Bernstein
Karl Otto & Ingemo Bonnier
Richard Buxton
Sir Ronald & Lady Cohen
Jill Cramphorn
Stefan Cross
Adam Dustagheer
Sarah Elson
Jacqueline & Michael Gee
Dr Peter Guider
Malcolm Herring
Dr Patsy Hickman
Ralph & Yolande Kanza
Mr Karpukhovich & Mrs Litvintseva
Donovan Kelly & Ann Wood
Colin Kirkpatrick
Sybil Kretzmer
Steven Larcombe
Varda Lotan & Angus Braham
Robert McHenry & Sally Lloyd-Bostock
Mrs Kathrine Palmer
Ceinwen & Jonathan Rees
Roberta & Stephen Rosefield
Anand & Lena Sagar
Sue Sheridan OBE
Matthew Slotover & Emily King
Mark Smith & Geraldine Wong-Smith
Andrew Smith
Jo & Toby Thomson

And all those who wish to remain anonymous

Governors

Misan Harriman Chair
Luke Mayhew Deputy Chair
Kieron Boyle
Anaïs Hayes
Dame Vivian Hunt
Mike Hussey
Sir Roly Keating
Jerome Misso
Ndidi Okezie OBE
Sandy Rattray
Sir William Sargent
Libby Savill
Lynne Shamwana
Leigh Tavaziva

With thanks to all our Governors for their support of the classical music programme.



bachtrack

For well-informed (musical) life choices

You care about the music in your life – and you know that nothing matches the live experience.

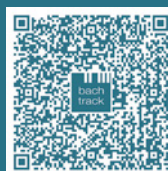
At Bachtrack, we care about being the world's leading source of information and opinion on performances of classical music, opera and dance.

With our comprehensive listings – UK and worldwide – and specialist search engine, you can pinpoint events that will interest you and connect quickly to box offices.

More than that, Bachtrack rounds things out with lively, illuminating interviews, articles and reviews – all produced by our own international team of expert writers.

When it comes to planning your musical life, it's worth making Bachtrack your first choice.

Bachtrack.com



Bachtrack: for people who want classical music in their life

Delius: Decompressed

Rediscover classical in hi-res audio

**A new
classical
and jazz
streaming
service**

- Reviews and daily articles from our team of music experts
- Fair remuneration for artists and composers with our innovative pay-per-second model
- Hi-Res audio and over 70,000 digital booklets



prestomusic.com/streaming

**Listen now
FREE 30
day trial**



Join us for a memorable musical journey:

Norway
Bergen and Oslo

Finland
Kuhmo and Savonlinna

Ireland
West Cork

USA
Santa Fe

Switzerland
Gstaad

Czech Republic
Brno



SCAN ME



**For information and reservations
visit www.kudutrans.com**

Olavinlinna Castle
Home of the Savonlinna Opera Festival

John & Arthur Beare

130 YEARS OF EXPERTISE
FOR MUSICIANS. FOR COLLECTORS. FOR MUSIC LOVERS.

Visit our London showroom and experience

**“the acknowledged world authority
on stringed instruments”**

The Guardian

Appointments available:
Weekdays, 9am-5pm

To arrange appointments, please contact:
violins@beares.com
+44 (0)20 7307 9666

Winner of the Queen's Award for Enterprise
Honorary Advisors to the Royal Society of Musicians
Official valuers for the Royal Academy of Music
Members and examiners for the
British Antique Dealers' Association

Managing Director: Steven Smith
30 Queen Anne Street, London, W1G 8HX
Tel. +44 (0)20 7307 9666
violins@beares.com | www.beares.com

The “London, Boccherini” Antonio Stradivari, Cremona, c.1698
Cello currently loaned to Kian Soltani through the
Beare's International Violin Society



ENGLAND 1929

THE ULTIMATE COLLECTION OF CLASSICAL VINYL



SHOP THE FULL COLLECTION

[DECCA.LNK.TO/THECOLLECTION](https://decca.lnk.to/thecollection)





About the Southbank Centre

We're the UK's largest centre for the arts and one of the nation's top five visitor attractions, showcasing the world's most exciting artists at our venues in the heart of London. As a charity, we bring millions of people together by opening up the unique art spaces that we care for.

The Southbank Centre is made up of the Royal Festival Hall, Queen Elizabeth Hall, Purcell Room, Hayward Gallery, National Poetry Library and Arts Council Collection. We're also one of London's favourite meeting spots, with lots of free events and places to relax, eat and shop next to the Thames.

If you'd like to get in touch, our address is Southbank Centre, Belvedere Road, London, SE1 8XX, or email hello@southbankcentre.co.uk

Eat, drink & shop

Eating, drinking and shopping? Take in the views over food and drinks at our on-site bars and cafes, including the Seventy5th Balcony Bar on Level 5 of the Royal Festival Hall, and the Festival Bar & Kitchen and Ballroom Cafe on Level 2. Visit our shops for products inspired by our great cultural experiences, iconic buildings and central London location. Find more to explore on-site at Beany Green, Comptoir Libanais, Côte Brasserie, Flat Iron, Foyles, Giraffe, Honest Burgers, La Gamba, Las Iguanas, Pret, Strada, Skylon, wagamama and Wahaca. Don't forget the Southbank Centre Food Market, open Friday – Sunday and bank holiday Mondays.

southbankcentre.co.uk/foodanddrink

Access

The Southbank Centre is accessible to all and level access is available to all of our venues. For access information, see our website. southbankcentre.co.uk/access

To receive publications in alternative formats and for further information, email accesslist@southbankcentre.co.uk or phone 020 3879 9555



How to book tickets

Online southbankcentre.co.uk*

By phone 020 3879 9555*

* Booking fees apply online (£3.50) and over the phone (£4). There are no booking fees for in-person bookings, Southbank Centre Members, Supporters Circles and Patrons.

Many of our ticket prices include a £2 restoration levy, enabling us to care for our historic buildings. Ticket prices may be adjusted without notice to reflect demand. See all of our ticket terms and conditions below.

southbankcentre.co.uk/website-ticket-terms

Children aged 7+ are welcome at most Southbank Centre classical concerts, except where indicated. Under-12s must be accompanied by an adult on our site. See our website for information about concessions.

Stay in the know

Subscribers to our email updates are the first to hear about new events, offers and competitions. Just head to our website to sign up.

Join and support

Become a Member and never miss a moment. Join for presales to all of our events, free entry to the Hayward Gallery, access to our Members' Lounge and a discount on selected retailers and restaurants.

The Southbank Centre is a registered charity. We rely on support from kind individuals to help us deliver a vibrant programme that everyone can access. As a supporter, you can get closer to our work and see how your support makes a difference.

southbankcentre.co.uk/join

Explore our whole programme: Classical music multi-buy

You can book concerts from across our programme in Classical Music: Autumn/Winter 2025/26 and receive a discount:**

3 – 4 events: 10% discount

5 – 7 events: 15% discount

8 – 10 events: 20% discount

11 – 14 events: 25% discount

15+ events: 30% discount

**Discounts only apply when booking full-price tickets for a minimum of three eligible events in Classical Music: Autumn/Winter 2025/26, which runs from September 2025 to January 2026, inclusive.

Image credits: Mark Ball, Toks Dada © David Levene; Attacca Quartet © David Goddard; BBC Concert Orchestra © courtesy the artist; Sean Shibe © Kaupo Kikkas; Aurora Orchestra © Stanton Media; Isata Kanneh-Mason © Robin Clewley; Paraorchestra © Eljay Briss; Michael Barenboim © Marcus Hohn; Karina Canellakis © Mathias Bothor; Masabane Cecilia Rangwanasha © Vera Elma Vacek; James Ehnes © Ben Ealovega; Alena Baeva © Andrej Grilc; Tiffany Poon © Remy Holwick; Elim Chan © Simon Pauly; Evgeny Kissin © Sebastian Haenel; Marius Neset © Helge Hansen and Josh Croll; Sheku Kanneh-Mason © Chris O'Donovan; Fazil Say © Fethi Karaduman; ZRI © Liv Øvland; Claire M. Singer © Seán Antleis; Raphael Wallfisch and Anita Lasker-Wallfisch, *The Last Musician of Auschwitz* © Two Rivers Media. Photo: Toby Trackman; Anna Vinnitskaya © Marco Borggreve; Vladimir Jurowski © Simon Pauly; Alexandra Dariescu © Nick Rutter; Dame Sarah Connolly © Andrew Crowley; Harish Shankar © Neda Navaee

Listings correct at time of going to press.

The Southbank Centre is a registered charity no. 298909



Supported using public funding by
**ARTS COUNCIL
ENGLAND**

**[Recycled
logo here]**