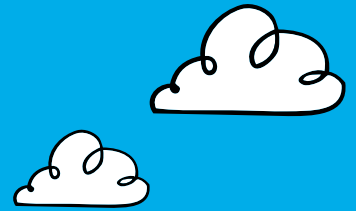
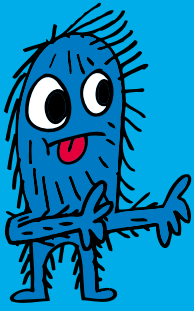


SOUTHBANK CENTRE



Accessible events at Imagine Children's Festival

Imagine Children's Festival is back in 2022, celebrating 20 years of families enjoying all kinds of art and culture together. Our half-term festivities include a wide range of accessible events for a variety of needs, allowing everyone to experience the very best children's theatre, music, literature and, most importantly, full-on fun.

The festival features BSL, Touch Tours, Relaxed Performances and performances for SEND audiences.

Literature



© Double or Nothing Productions

Growing Up, Making Mistakes and Becoming YOU!

SAT 12 FEB

Rudimental's Leon Rolle and writer Derek Owusu's new book, *About This Boy*, is about finding confidence, being yourself and never giving up on your dreams!

This event is British Sign Language interpreted (BSL).

For ages 9+



Sat 12 Feb, 2pm

© Steve Ullathorne

Julia Donaldson & Friends: A Pocketful of Songs

SAT 19 FEB

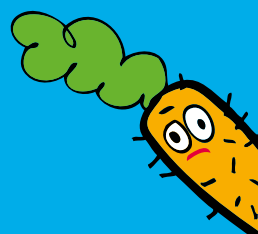
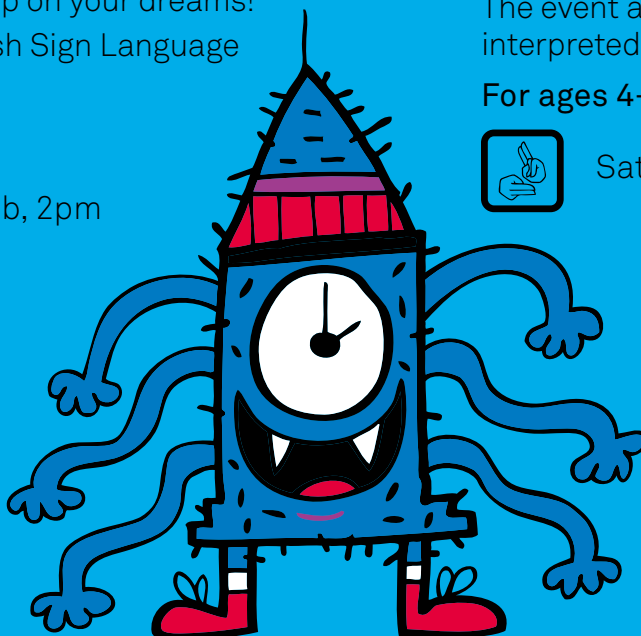
A musical show filled with much-loved characters, including Zog, The Highway Rat, Superworm and The Gruffalo.

The event at 12 noon is British Sign Language interpreted (BSL).

For ages 4+



Sat 19 Feb, 12 noon





Elle McNicoll: Like a Charm

SAT 19 FEB

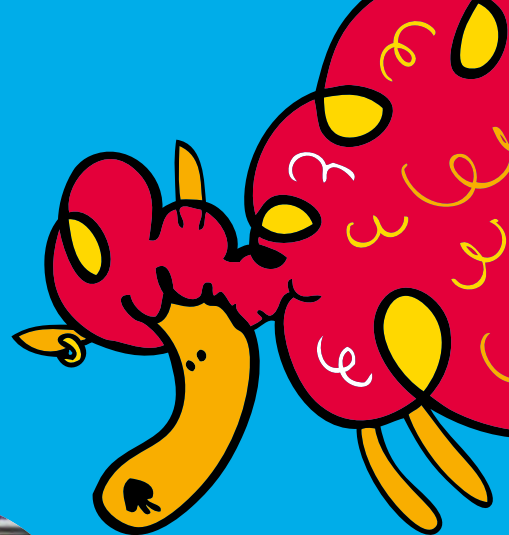
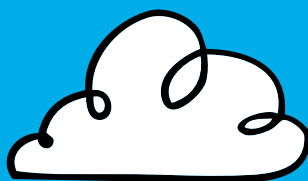
Elle McNicoll uncovers her mystical new book, Like a Charm, in conversation with Anna James.

This event is a Relaxed Performance (RP).

For ages 8+



Sat 19 Feb, 11am



© James Jordan

Escape with Jacqueline Wilson

SUN 20 FEB

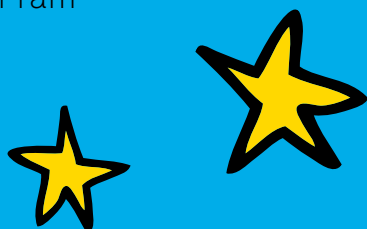
The bestselling children's author reveals how she created her most-loved characters and introduces her new books.

This event is British Sign Language interpreted (BSL).

For ages 8 – 12



Sun 20 Feb, 3pm



Illustrations © Tony Ross, Sticky McStickstick by Michael Rosen & illustrated by Tony Ross, reproduced by permission of Walker Books Ltd

A Morning with Michael Rosen

SUN 20 FEB

The former Children's Laureate introduces Sticky McStickstick, his moving and inspirational new picture book – a story of perseverance and hope.

This event is British Sign Language interpreted (BSL).

For ages 5+



Sun 20 Feb, 10.45am



Performance & Music



intothecLOUDS: SEND Audiences

WED 9 FEB

Fluffy and soft and bright: welcome to the Cloud Factory in a playful, sensory and highly visual theatre experience.

This performance is specifically for young audiences with special educational needs and disabilities (SEND) or children who are not neurotypical.

SEND performance: Wed 9 Feb, 11am.

For ages 5 – 11



Illustration © Jon Klassen

The Dark

SAT 12 & SUN 13 FEB

A brave young boy befriends the darkness in a captivating and accessible performance. Featuring vibrant new choreography and live music, The Dark is a universal, empowering story about facing your fears.

*Touch Tours allow people to touch the sets, props and costumes before the performance, and may be useful to blind and partially-sighted visitors.

For ages 5 – 10



Sat 12 Feb, 10am (for 11am show) & Sun 12 Feb, 1pm (for 2pm show)*



Peppa Pig: My First Concert

FRI 11 – SUN 13 FEB

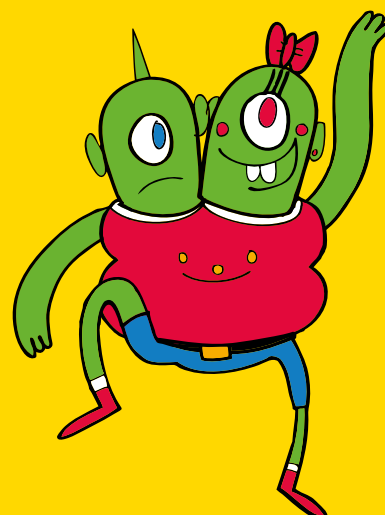
Everyone's favourite Pig family leads a fun, interactive introduction to live orchestra for the whole family.

The event on Sunday 13 February at 10.30am is British Sign Language interpreted (BSL).

For ages 2+



Sun 13 Feb, 10.30am





© Jack Offord

Josephine

WED 16 FEB

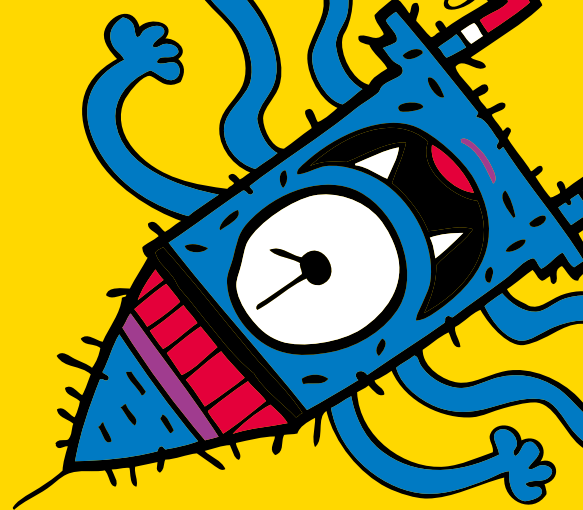
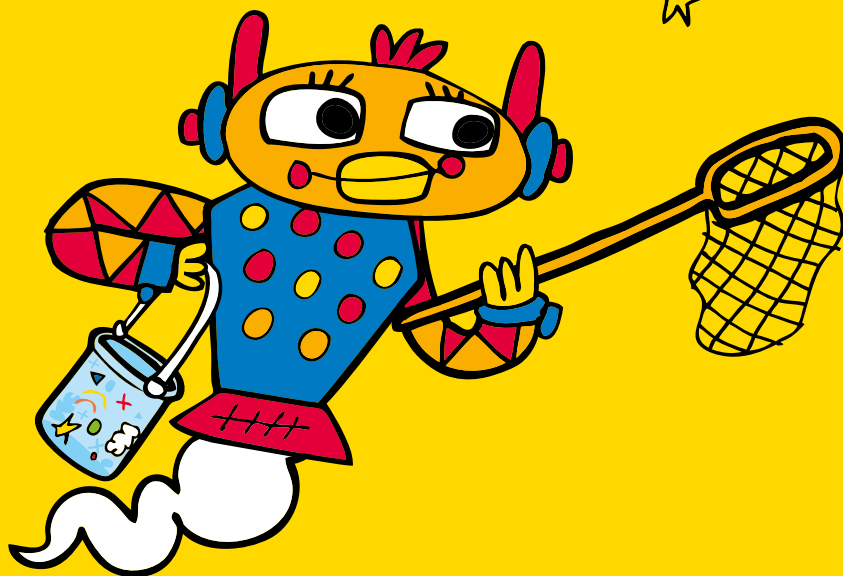
With passion, wit and jazz, this play tells Josephine Baker's story, from the slums of St Louis via the bright lights of Paris and into the hearts of the world.

The event on Wednesday 16 February at 12.30pm is a Relaxed Performance.

For ages 8+



Wed 16 Feb, 12.30pm



Free Events



© Belinda Lawley

Lunchbox Jukebox

SAT 12 – SUN 20 FEB

Every lunchtime we're handing over the reins to you and asking for your favourite tunes to soundtrack the snacking.

The event on Tuesday 15 February at 12.30pm is British Sign Language interpreted (BSL).

For ages 5 – 11



Tue 15 Feb, 12.30pm



© Emma Jones Photography

Palaver Party

MON 14 FEB

Palaver Party is about being free to be whoever you want to be.

Host Fatt Butcher ushers in a family extravaganza of music, performances and party games.

This event is British Sign Language interpreted (BSL).

Suitable for all ages



Mon 14 Feb, 10:30am & 13:30pm



Wellbeing Wind Down

Sat 12 – Sun 20 Feb

3.30pm – 4pm Stretch, breathe, focus and relax with mindfulness experts from the Tangled Feet theatre company.

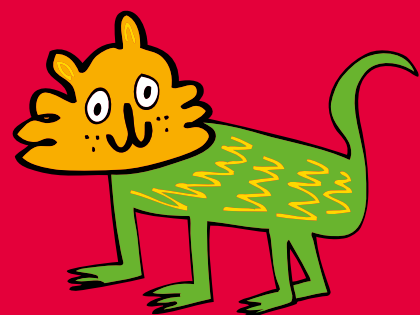
Excluding Sun 13 Feb

This event is Makaton interpreted.

For ages 5+



Fri 18 Feb





Pop Up Projects: Stories to Make a Difference

TUE 15 FEB

Through craft, storytelling, live illustration and a reading of A Swallow's Kiss, explore the 10 Stories to Make a Difference collection.

The event at 10.30am is British Sign Language interpreted (BSL).

For ages 5+



Tue 15 Feb, 10.30am



The Origin of Carmen Power

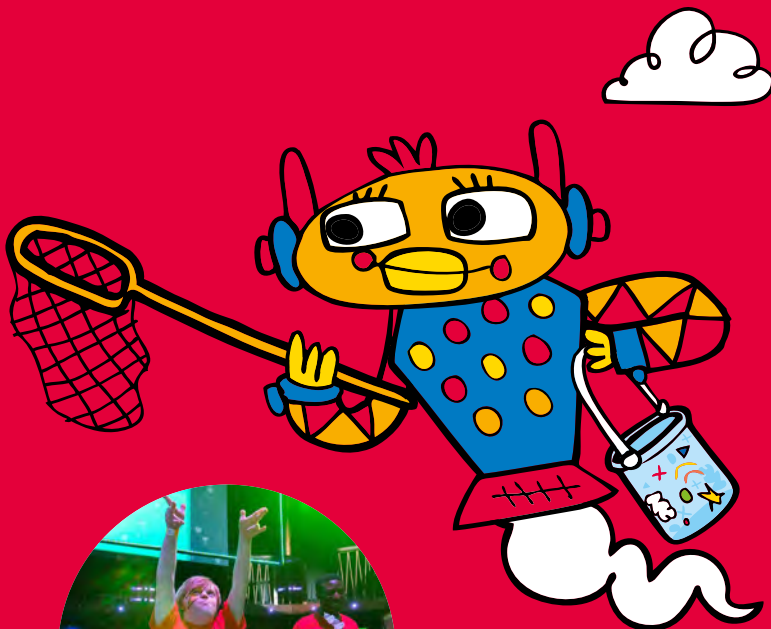
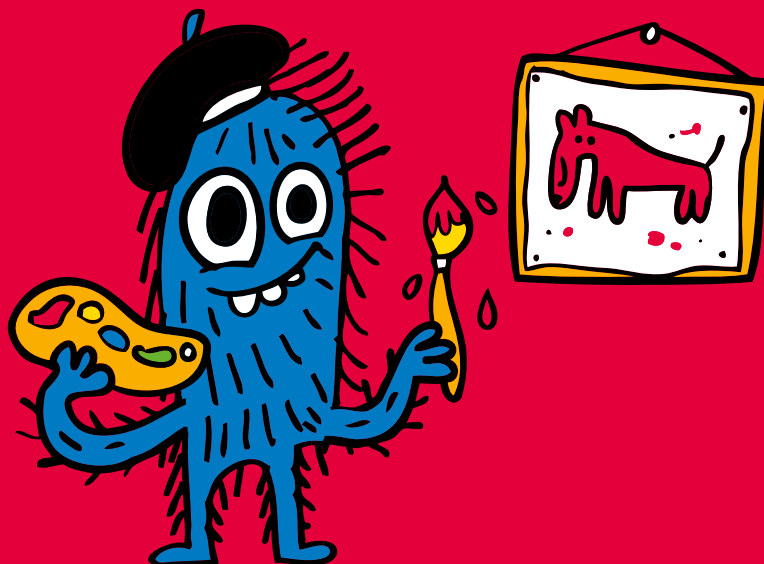
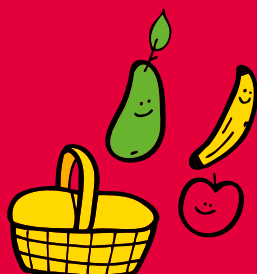
WED 9 – SUN 20 FEB

In this playful online quest, monsters, magic powers and unicorns help share Carmen's real-life experience of cancer.

This event is Captioned.

For ages 7 – 13

CAP



Do Your Own Thing DJ Takeover with Heart n Soul

FRI 18 FEB

Break out your best moves at a free family party with the Do Your Own Thing DJs, taking over The Clore Ballroom with their favourite tunes.

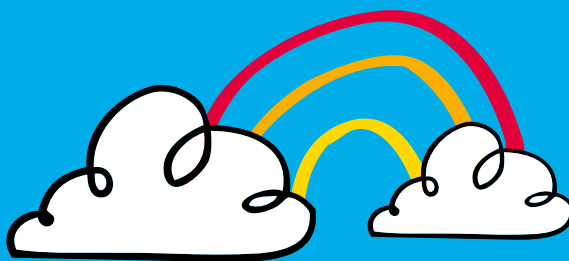
This event is Makaton interpreted.

Suitable for all ages



Fri 18 Feb, 10.30am & 1.30pm

How to book



Online

southbankcentre.co.uk/imagine*

*Booking fees apply online (£3.50) and over the phone (£4). There are no booking fees for Southbank Centre Members and Supporters Circles.

To book tickets for access services such as BSL services and Touch Tours, email accesslist@southbankcentre.co.uk

Please see southbankcentre.co.uk/access for further details and to join our free Access Scheme.

Access

Southbank Centre is accessible to all, and level access is available to all of our venues. Assistance, including guiding, is available for blind and visually impaired visitors.



British Sign Language interpreted



Relaxed Performance



Captioned



Touch Tour



Makaton

Getting here

Southbank Centre
Belvedere Road
London SE1 8XX

Underground

Waterloo and Embankment

Buses

Waterloo Bridge, York Road
and Stamford Street

Mainline rail stations

Waterloo, Waterloo East
and Charing Cross

Join the conversation



@southbankcentre



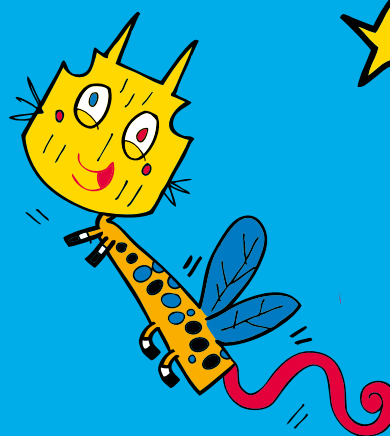
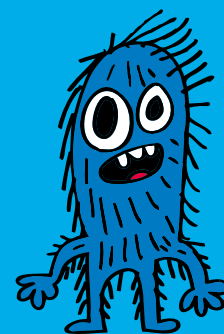
facebook.com/southbankcentre



@southbankcentre

#ImagineChildrensFestival

Imagine characters © John Burgerman



Supported using public funding by
**ARTS COUNCIL
ENGLAND**