

SOUTHBANK CENTRE

Accessible events at Imagine Children's Festival

Wed 7 – Sat 17 Feb 2024

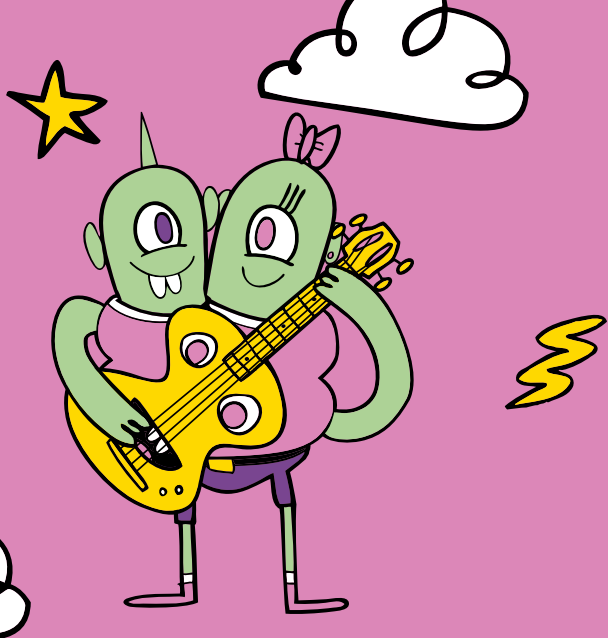
Imagine Children's Festival is back for 2024! Our half-term festivities include a wide range of inclusive and accessible events for a variety of needs, allowing everyone to experience the very best children's theatre, comedy, music, literature, dance and full-on fun.

The festival features British Sign Language (BSL) interpreted, Audio Described, non-verbal and Sensory Adapted performances.

Roaming BSL interpreters are available to book at the Welcome Desk, Level 2, Royal Festival Hall on a first-come, first-served basis on Sunday 11 and Thursday 15 February.

Imagine Children's Festival is a relaxed festival and all events are Relaxed Performances (RP), which means they have a relaxed approach to noise and movement in the space, and you are free to enter and exit. A chill-out space and noise-cancelling headphones are available for children and adults. There are no adjustments to sound and lighting for these performances.





The Sticky Dance: Sensory Adapted

THU 8 FEB

Three dancers shimmy through the audience weaving a tapestry of sticky tape in this tactile, sensory adapted dance performance for young children.

This version of the show is for neurodivergent and disabled audiences, with or without diagnosis. It has a smaller audience capacity, with a maximum of eight children and their parents or carers in the space, making it more suitable for those who might benefit from a calmer environment.

For ages 3 – 7



Chotto Desh

FRI 9 & SAT 10 FEB

Akram Khan Company's family-friendly dance-theatre production creates a compelling tale of a boy's dreams and memories, from Britain to Bangladesh.

The performance on Sat 10 Feb at 6.30pm is Audio Described. A free Touch Tour prior to the performance is also available to book for ticket holders for this performance.

For ages 7+ but also suitable for older children and adults.



Sat 10 Feb, 6.30pm



There's a Monster in Your Show

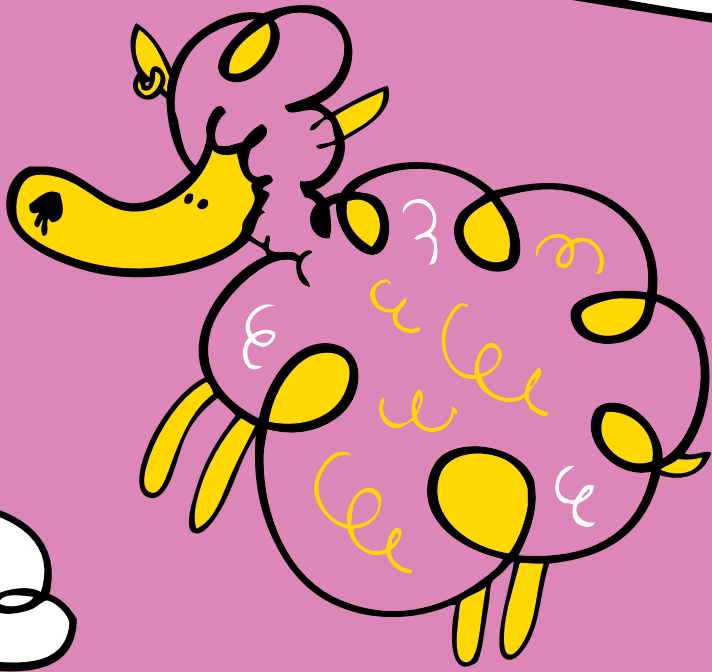
WED 7 – FRI 9 FEB

Expect playful fun in this high-energy interactive musical adaptation of Tom Fletcher's Who's in Your Book? Series.

For ages 2+



Thu 8 Feb, 1.30pm



Boxed In

SAT 10 & SUN 11 FEB

Boxed In is a playful, fun performance about someone who can't make head nor tail of the unspoken rules surrounding us.

Boxed In is largely non-verbal. This makes it accessible to a range of people, including d/Deaf, hard of hearing and non-English speakers or those with developing language and communication skills.

The performance on Sat 10 Feb at 2.30pm is Sensory Adapted with a lower audience capacity and adjustments to sound and lighting to make it more suitable for audiences with sensory sensitivities.

For ages 3 – 6

Sensory Adapted: Sat 10 Feb, 2.30pm



The Instrumentals

SAT 10 & SUN 11 FEB

Comedy, brilliant puppetry and bold music feature in *The Instrumentals*, a family show telling the story of Belle and some dusty musical instruments.

The performance on Sun 11 Feb at 2pm is BSL interpreted with adjustments to sound and lighting to make it more suitable for audiences with sensory sensitivities. Capacity for this performance is not reduced.

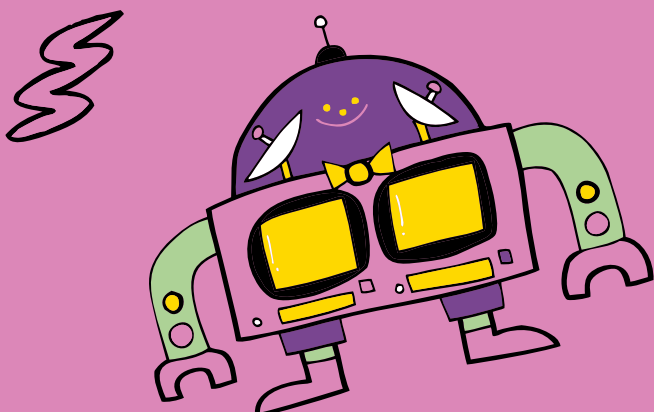
The performance on Sun 11 Feb at 11.30am is Sensory Adapted.

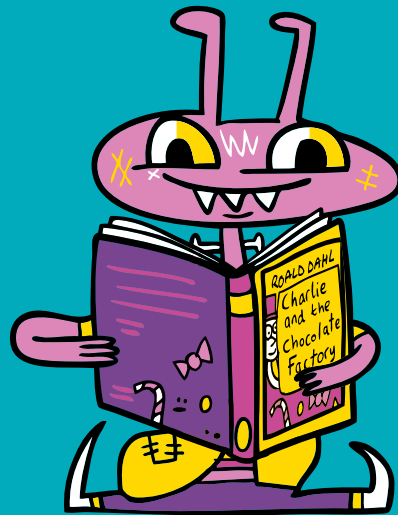
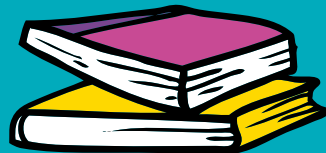
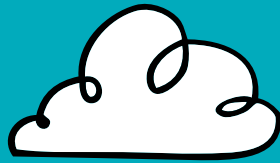
For ages 4+



Sun 11 Feb, 2pm

Sensory Adapted: Sun 11 Feb, 11.30am





Wellbeing Wind Down

SAT 10 – FRI 16 FEB,
EXCEPT FOR MON 12 FEB

FREE



Free mindfulness sessions designed to help the whole family relax.

The sessions on Sun 11 Feb and Thu 15 Feb are British Sign Language Interpreted (BSL).

For ages 5+



Sun 11 & Thu 15 Feb, 3.30pm

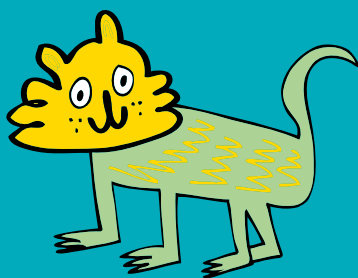
A Morning with Rob Biddulph

SUN 11 FEB

Join award-winning author and illustrator Rob Biddulph for a fun-packed session for all the family.

This event is British Sign Language interpreted (BSL).

For ages 5+



ZooNation's Hip-Hop-Half-Term

SUN 11 FEB

Join ZooNation: The Kate Prince Company for a fun-filled day for all the family, with workshops, a DJ jam and a performance from ZooNation Youth Company.

Workshop announcements and instructions are British Sign Language interpreted (BSL).

For ages 5+

FREE



An Afternoon with Michael Rosen

SUN 11 FEB

Join national treasure Michael Rosen for an afternoon of family entertainment, stories and poems, as he introduces his new book, *The Incredible Adventures of Gaston Le Dog*.

This event is British Sign Language interpreted (BSL).

For ages 6+





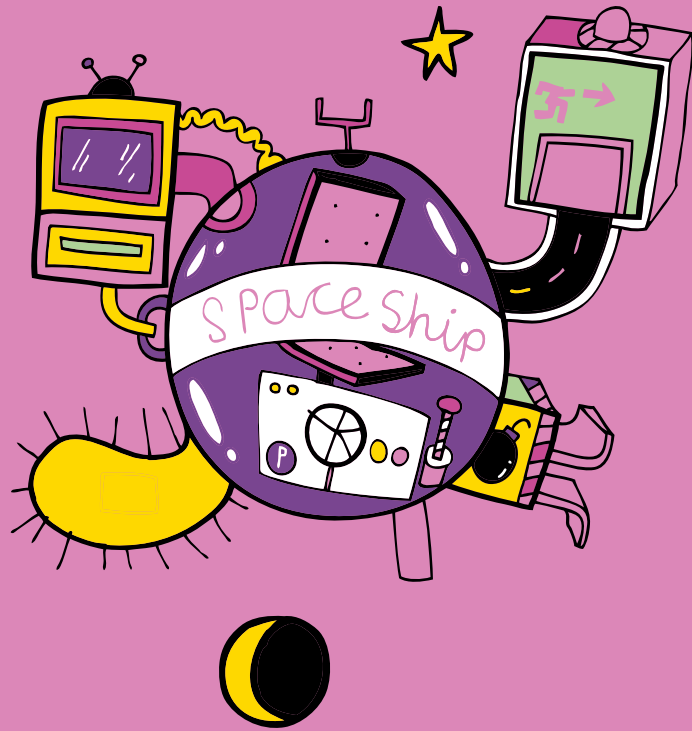
YolanDa's Band Jam

MON 12 FEB

In an updated live version of her CBeebies TV show, saxophonist YolanDa Brown returns to introduce families to the joys of music with singing, dancing and playing.

This performance is British Sign Language interpreted (BSL).

For ages 3+



SPIN: Raps, Poems, and Stories

THU 15 FEB

Join Apples and Snakes' word warriors for a fun-filled day of raps, poems & stories in this interactive performance.

The performance at 1.30pm is British Sign Language interpreted (BSL).

For ages 5+



1.30pm



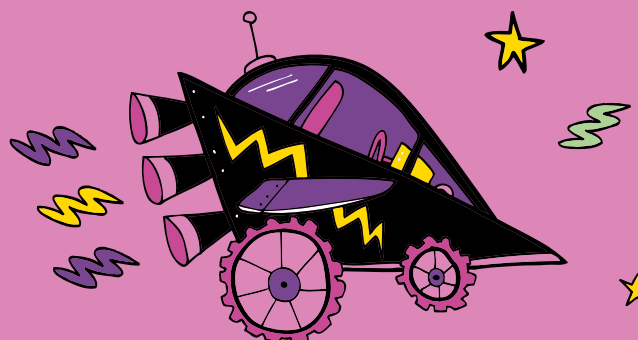
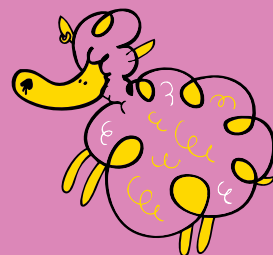
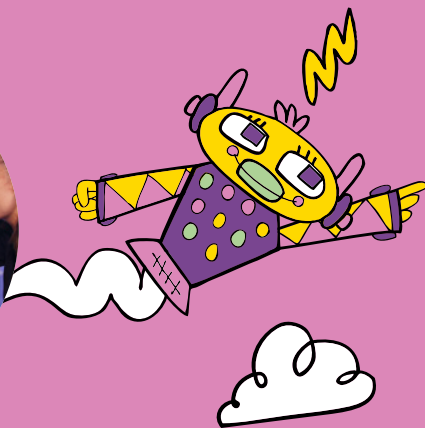
The River

MON 12 FEB

The River is Bamboozle Theatre Company's newest show for children who might be described as having profound and multiple learning disabilities (PMLD) and is specifically designed for children who use a wheelchair.

There is no need to book a dedicated wheelchair ticket for this performance.

For ages 6 – 14





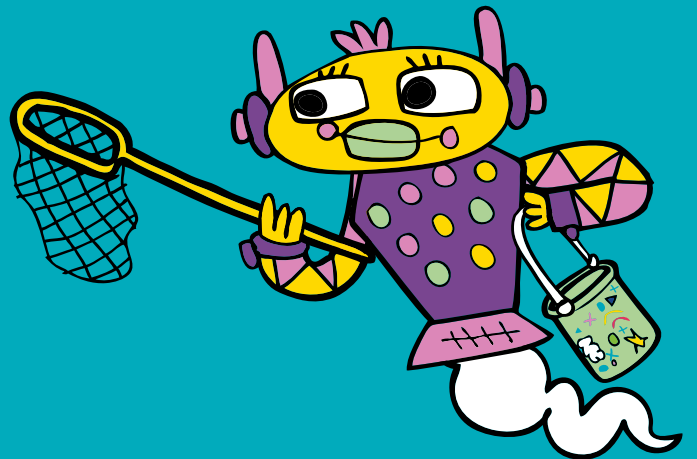
David Litchfield & His Merry Band of Bears

THU 15 FEB

Hear about the bear who found a piano in the woods and grew up to become a star at a fun-filled event with the author-illustrator and his Merry Band of Bears.

This event is British Sign Language interpreted (BSL).

For ages 3+



Starchitects: A Cosmic Adventure

THU 15 – SAT 17 FEB

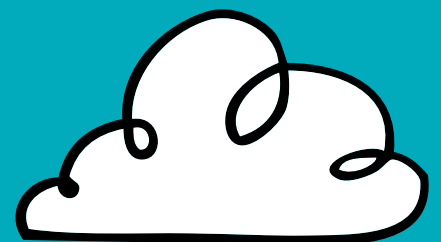
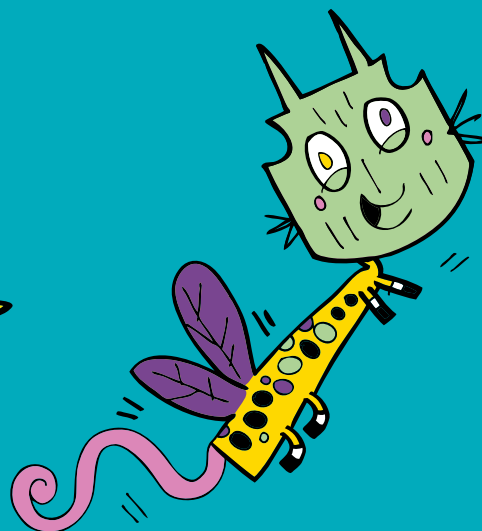
Starchitects is a joyful, cosmic spectacle by Motionhouse, telling the story of five children who dream of reaching the moon from their bedroom.

The performance on Fri 16 Feb at 11am is Audio Described. A free Touch Tour prior to the performance is also available to book for ticket holders for this performance.

For ages 3+



Fri 16 Feb, 11am





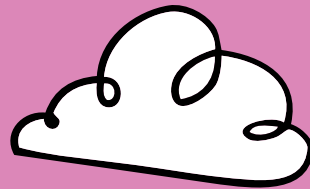
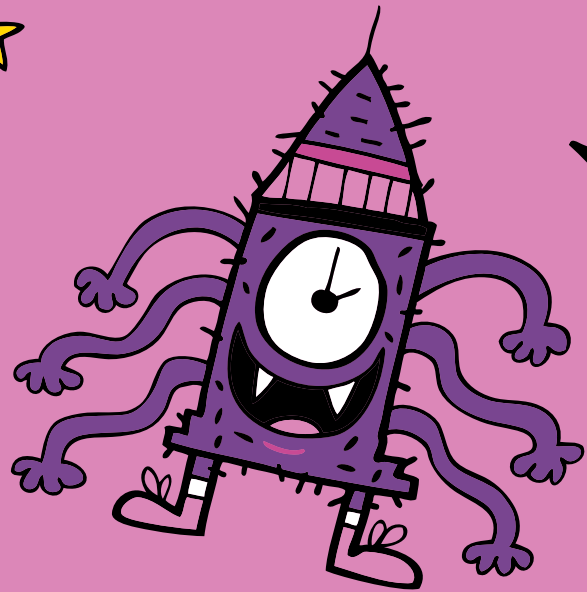
Patrick Kane: Human 2.0

THU 15 FEB

Take a glimpse into the future as Patrick Kane introduces his inspiring illustrated non-fiction book about the remarkable achievements of medical engineering.

This event is British Sign Language interpreted (BSL).

For ages 8+



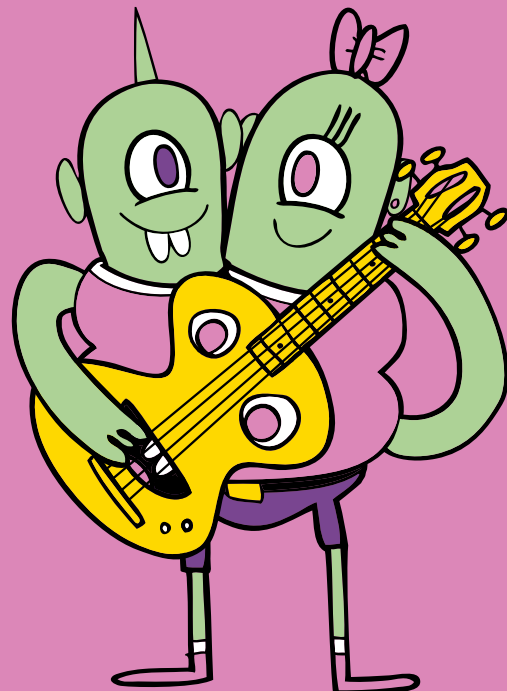
Rosie Jones: The Amazing Edie Eckhart

THU 15 FEB

Join TV comedian Rosie Jones as she introduces her sparky and hilarious new Edie Eckhart story, *The Friend Mission*, for World Book Day.

This event is British Sign Language interpreted (BSL).

For ages 8 – 11



How to book

Online

southbankcentre.co.uk/imagine*

*Booking fees apply online (£3.50) and over the phone (£4). There are no booking fees for Southbank Centre Members, Supporters Circles and Patrons.

To book tickets for access services such as BSL services and Touch Tours, email accesslist@southbankcentre.co.uk

Access

Imagine Children's Festival is a relaxed festival and all events are Relaxed Performances (RP).

Relaxed Performances have a relaxed approach to noise and movement in the space, and you are free to enter and exit during the performances. A chill-out space and noise-cancelling headphones are available for children and adults. There are no adjustments to sound and lighting for these performances.

The Southbank Centre is accessible to all, and level access is available to all of our venues. Assistance, including guiding, is available for blind and visually impaired visitors.

To receive further information email accesslist@southbankcentre.co.uk

Please see southbankcentre.co.uk/access for further details and to join our free Access Scheme.



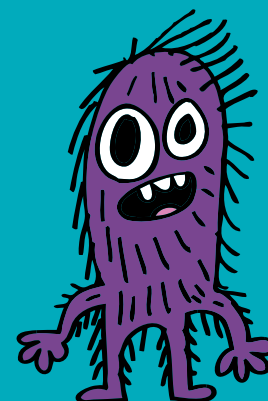
British Sign Language interpreted



Touch Tour



Audio Described



Getting here

Southbank Centre
Belvedere Road
London SE1 8XX

Underground

Waterloo and Embankment

Buses

Waterloo Bridge, York Road
and Stamford Street

Mainline rail stations

Waterloo, Waterloo East
and Charing Cross

Join the conversation



@southbankcentre



facebook.com/southbankcentre



@southbankcentre

#ImagineChildrensFestival

Image Credits

Imagine Children's Festival characters © Jon Burgerman
There's a Monster in Your Show © Pamela Raith
Photography

Chotto Desh © Camilla Greenwell

The Instrumentals © Alex Harvey-Brown

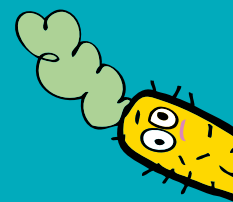
An Afternoon with Michael Rosen © Viviane Schwarz

YolanDa's Band Jam © CBeebies

The River © Darren Staples

Starchitects: A Cosmic Adventure © Dan Tucker

Rosie Jones: The Amazing Edie Eckhart © Aemen
Sukkar



Supported using public funding by
**ARTS COUNCIL
ENGLAND**